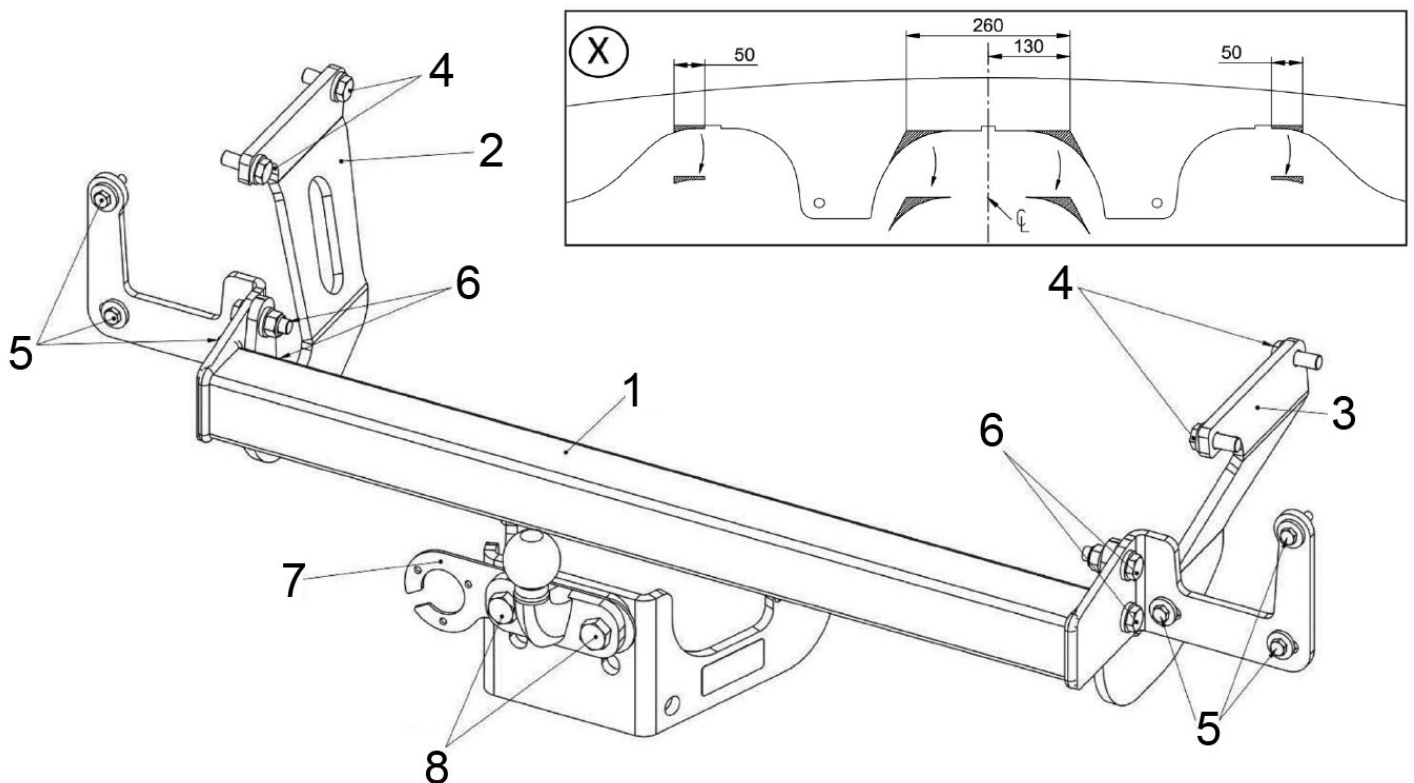


Parts List:

Part No:	Description:	Size:	Torque	Qty:
1	Cross Bar			1
2	Left Side Arm			1
3	Right Side Arm			1
4	Bolt & Washer	M12 x 45 x 1.75mm	120Nm	4
5	Bolt & Washer	M8 x 35 x 1.25mm	24Nm	6
6	Bolt + Nyloc Nut & Washer	M12 x 45 x 1.75mm	120Nm	4
7	Electrical Plate			
8	Nut, Bolt & Lock Washer	M16 x 60 x 2.00mm	200Nm	2

Fitting:



Fitting:

1. Remove Bumper beam fixings at position (5) on image below. (Removing bumper side panels will give better access).
2. **Only on L2 Long Wheel Base models** – See bumper cut image (X)
3. Remove lower bumper fixings and insert crossbar (1) inside bumper. Loosely attach crossbar (1) to the rear panel using bolts (5).
4. Loosely attach Sidearms (2) & (3) to the chassis using bolts (4) and to the crossbar (1) using bolts (6).
5. Fully tighten all bolts to the recommended torque settings (Starting with bolts (5)) and re-fit the bumper.

Note: This towbar must be used with a Class A50-1 or A50-X towball, which dimensionally conforms to A50-1 with a 'D' & 'S' value greater than or equal to that of the towbar.

Manufacturers towing limits must be observed for towing capacity