

## OPEL

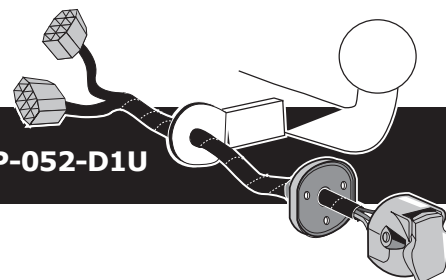
Meriva B 04/2010-  
Zafira Tourer 2011-  
Mokka 2013-  
Mokka X 09/2016-  
Cascada 2013-

## SAAB

9-5 06/2010-

## CHEVROLET

Orlando J309 02/2011-  
Trax 2013-

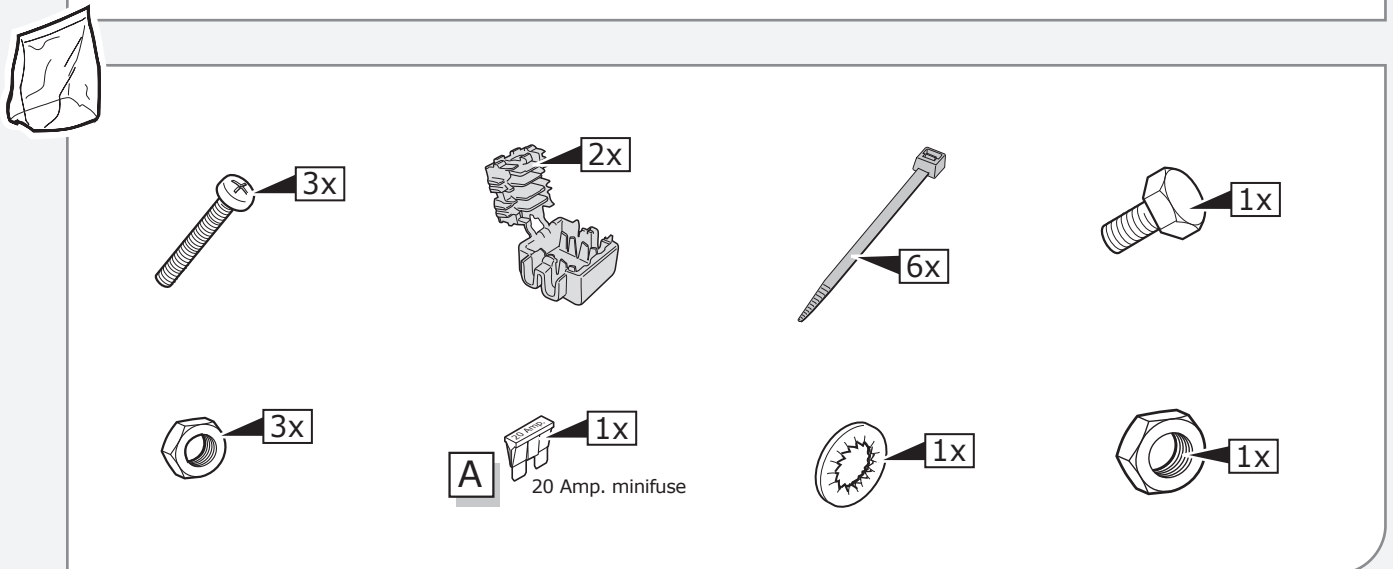
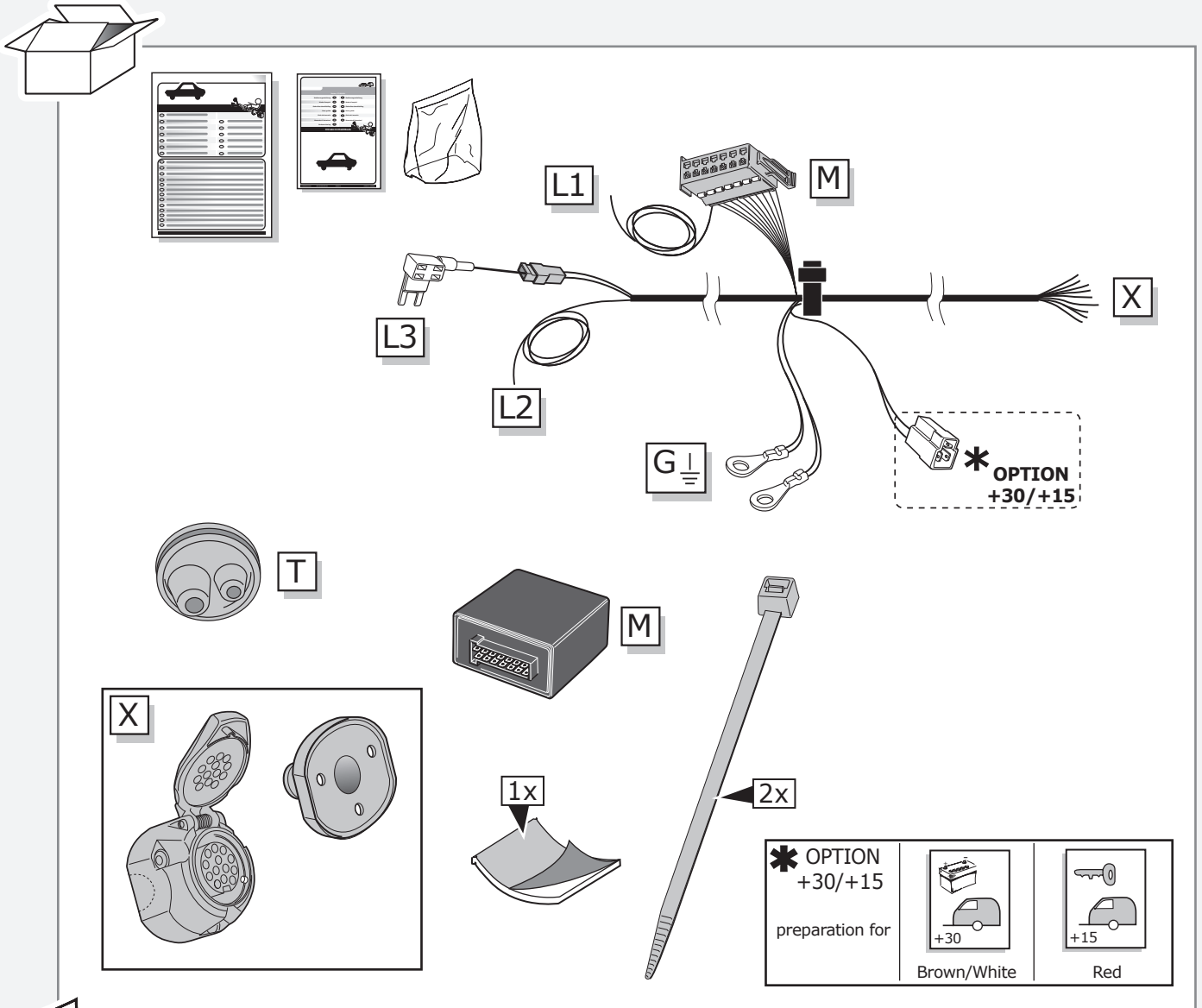


Partnr.: OP-052-D1U

- Fitting instructions electric wiring kit tow bar with 13-P socket up to DIN/ISO Norm 11446.
- We would expressly point out that assembly not carried out properly by a competent installer will result in cancellation of any right to damage compensation, in particular those arising by virtue of the product liability act.
- Contents of these kits and their fitting manuals are subject to alteration without notice, please ensure that these instructions are read and fully understood before commencing installation.
- Do not overload circuits; the maximum loads per connection are detailed in this manual.
- Attention! Before Installation, please read this manual carefully and inform your customer to consult the vehicle owners manual to check for any vehicle modifications required before towing.
- In the event of functional problems, troubleshooting must be limited to about 0.5 hours, contact the technical support:  
[ts-uk@ecs-electronics.com](mailto:ts-uk@ecs-electronics.com) / 07440 202 052.



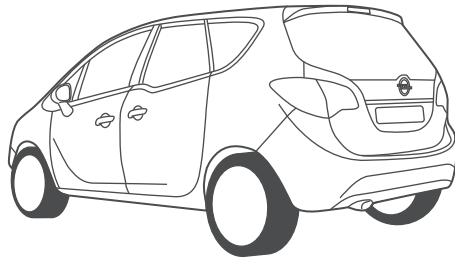
# Part list



**Meriva B**

Pag. 4

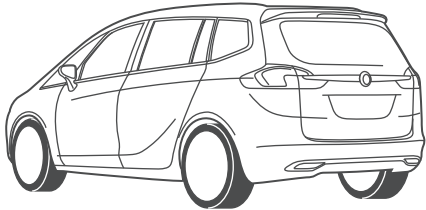
-  
Pag. 7



**Zafira**

Pag. 8

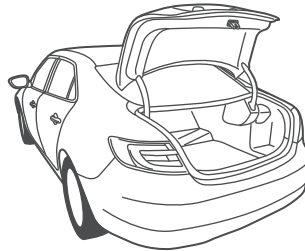
-  
Pag. 11



**Saab 9-5**

Pag. 12

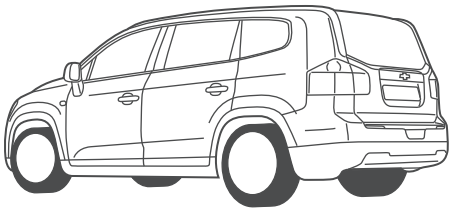
-  
Pag. 15



**Orlando**

Pag. 16

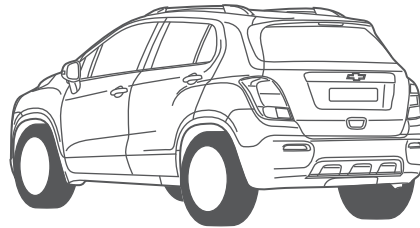
-  
Pag. 19



**Trax**

Pag. 20

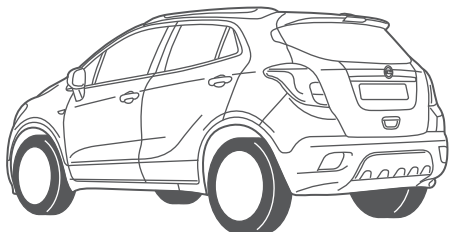
-  
Pag. 23



**Mokka**

Pag. 24

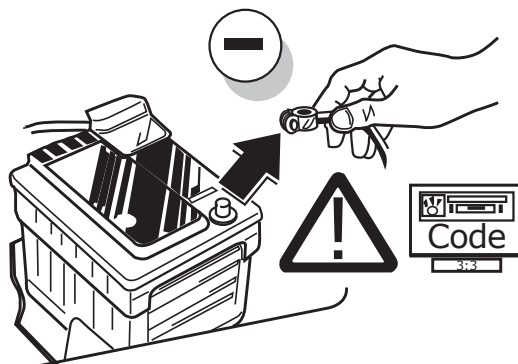
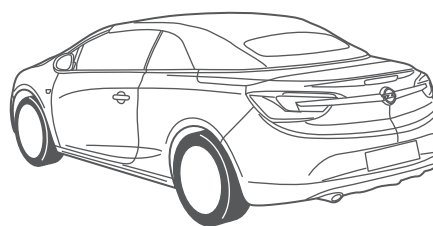
-  
Pag. 30



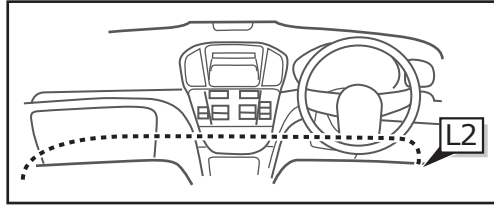
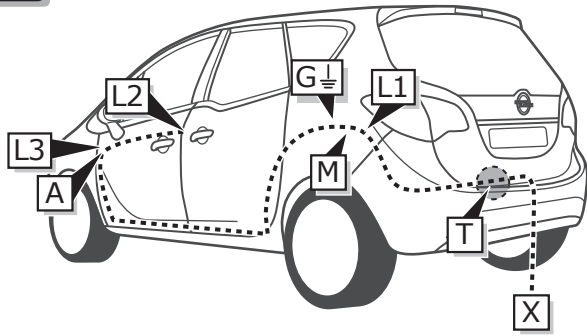
**Cascada**

Pag. 31

-  
Pag. 34



INFO

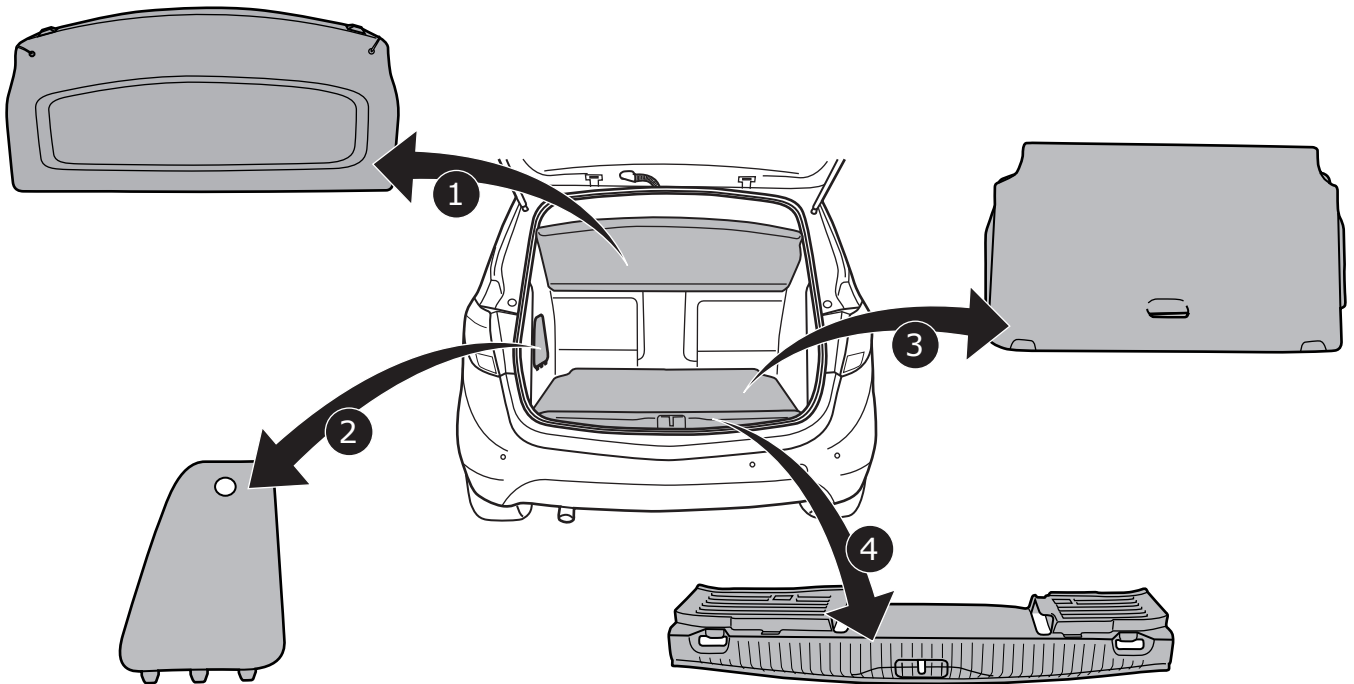


Meriva B

Pag. 4

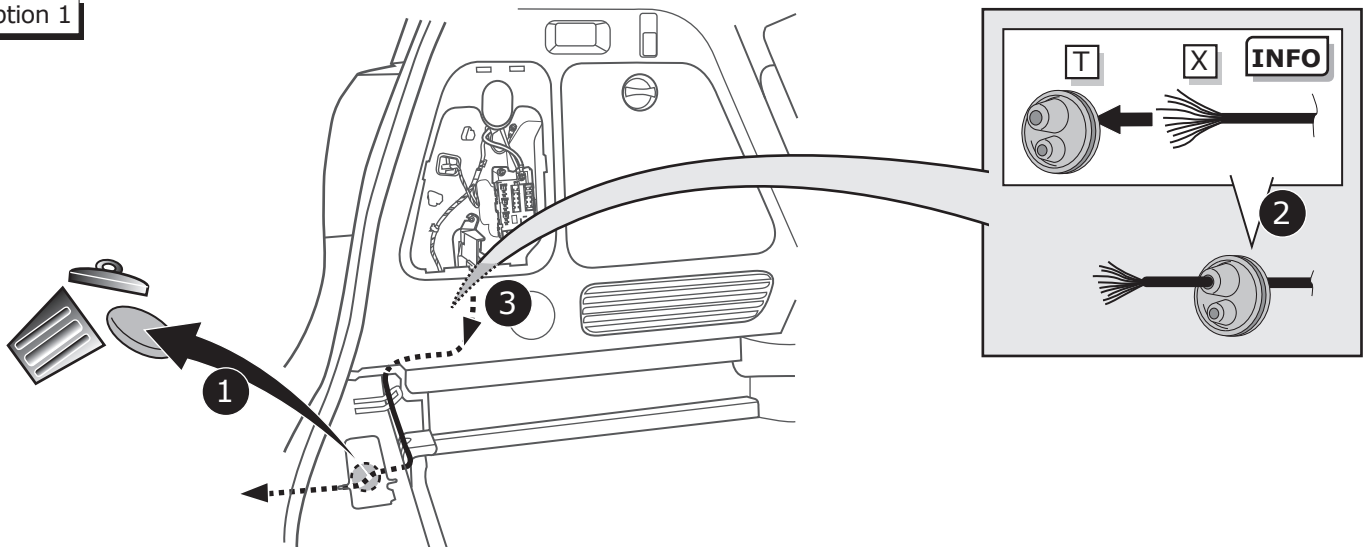
-  
Pag. 7

1



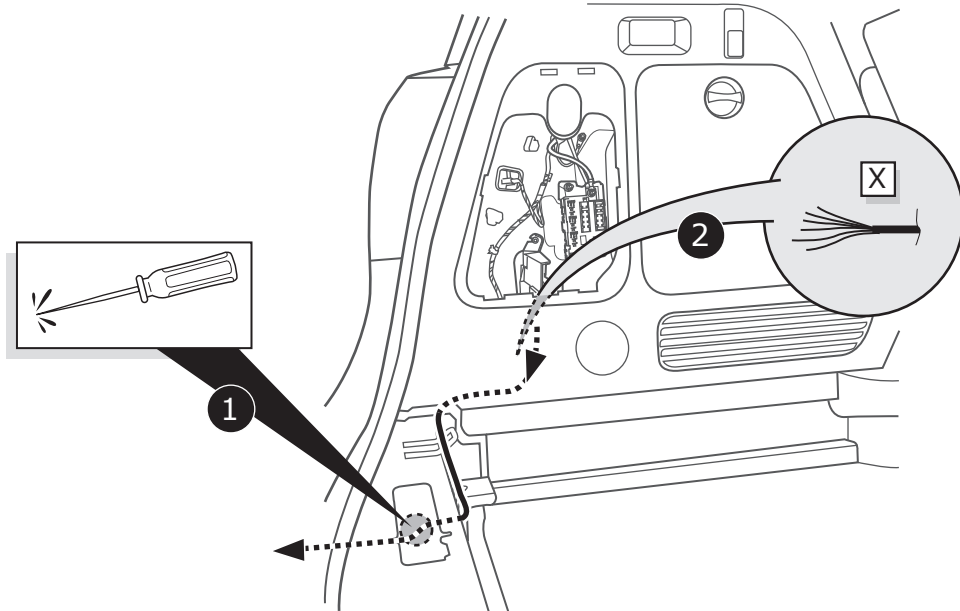
2

Option 1



3

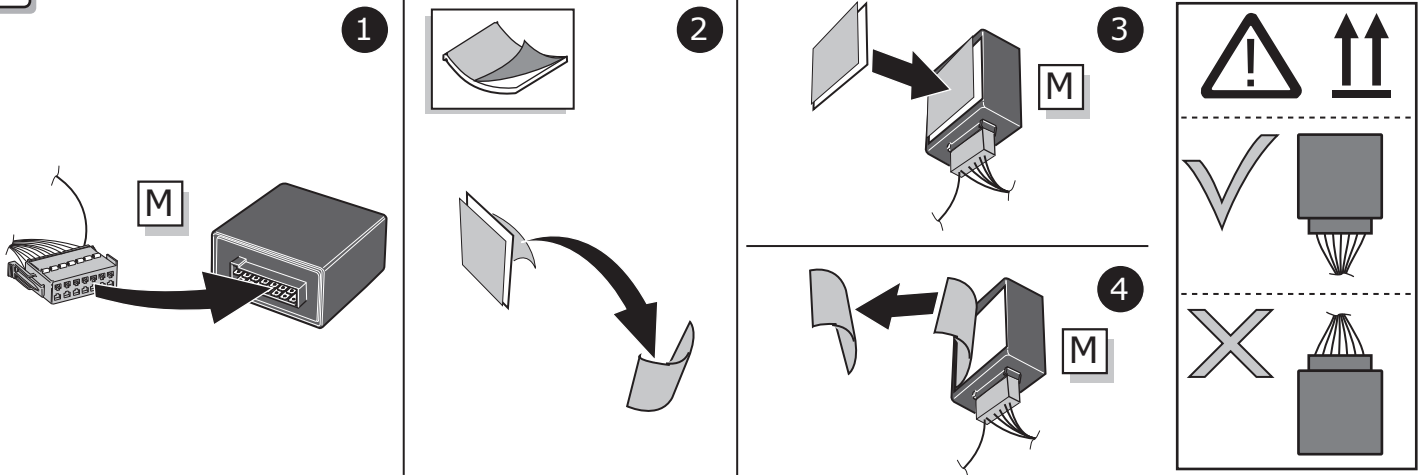
Option 2



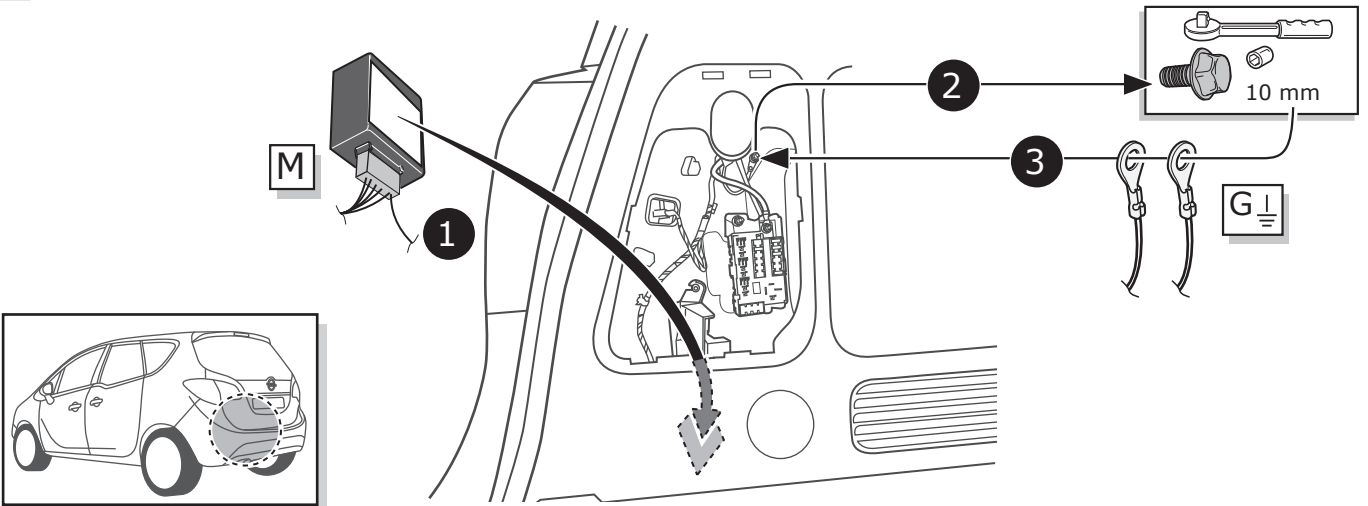
4



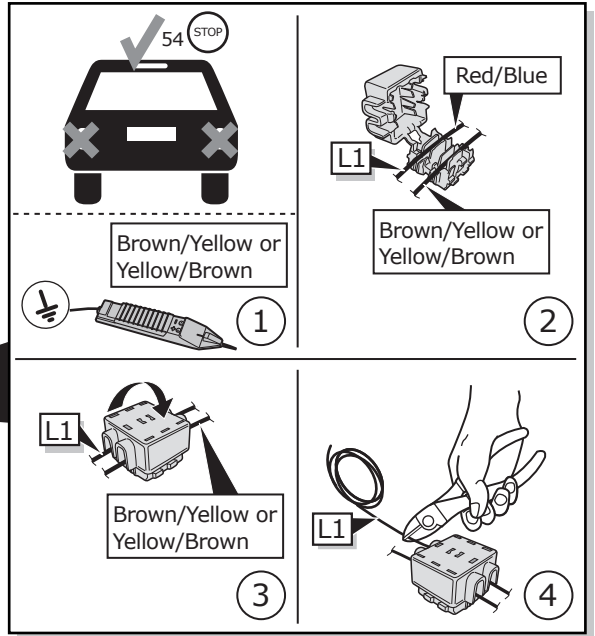
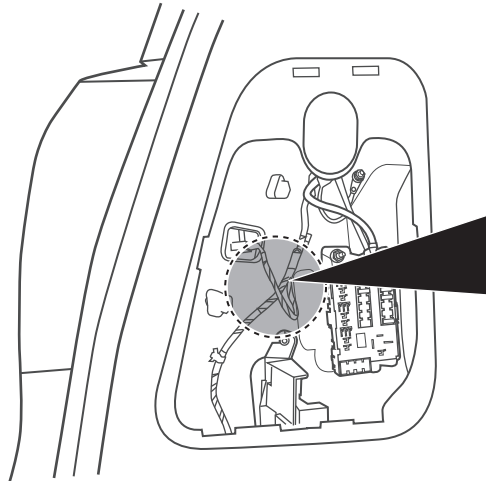
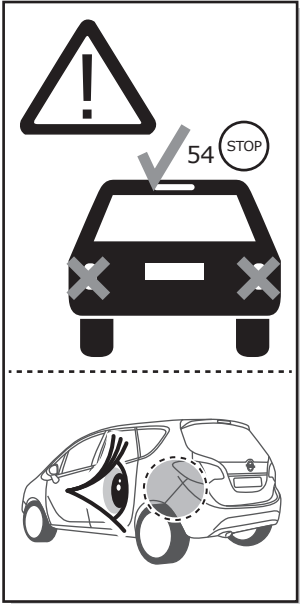
5



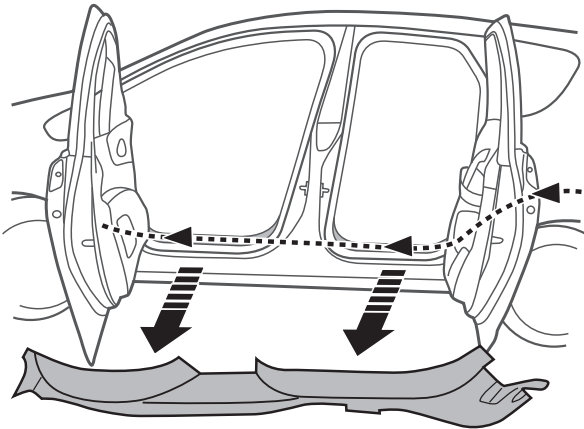
6



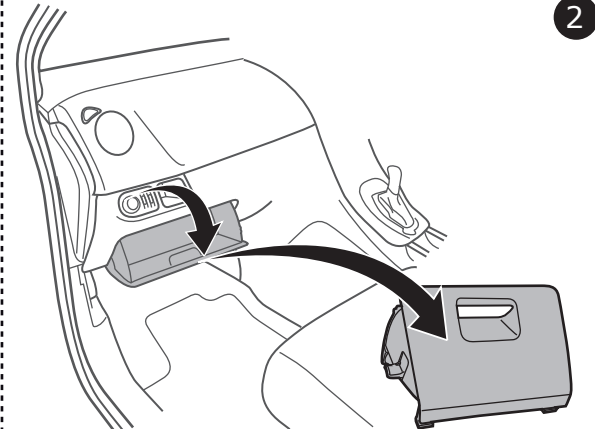
7



8

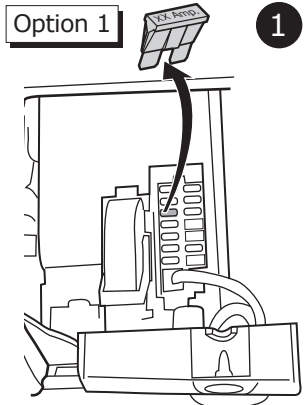
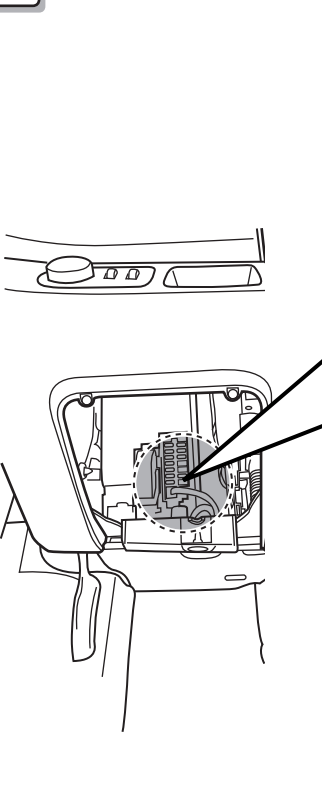


1

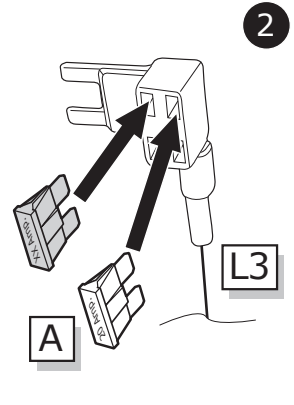


2

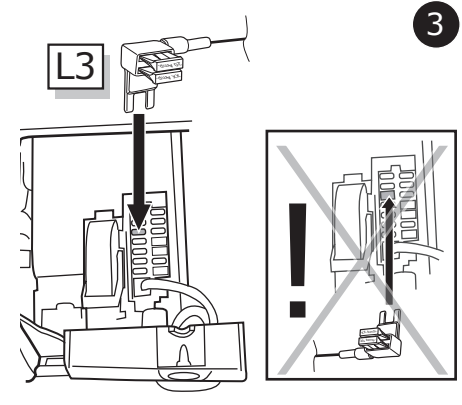
9



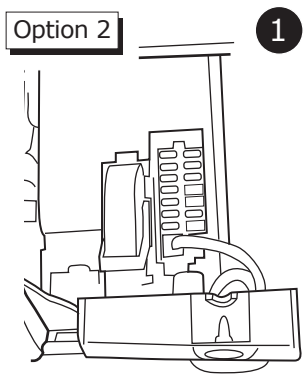
1



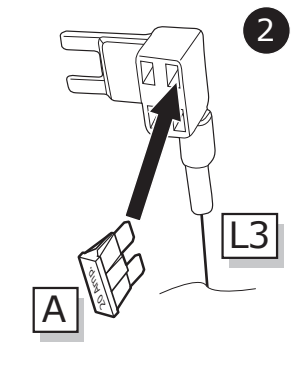
2



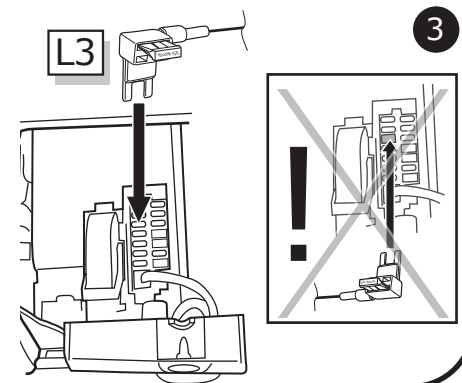
3



1

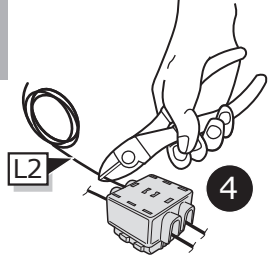
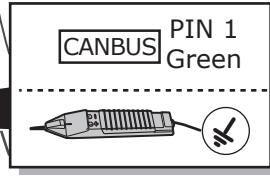
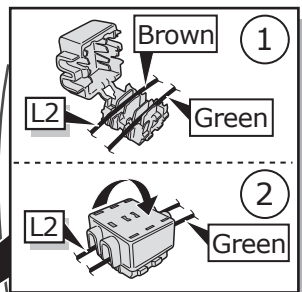
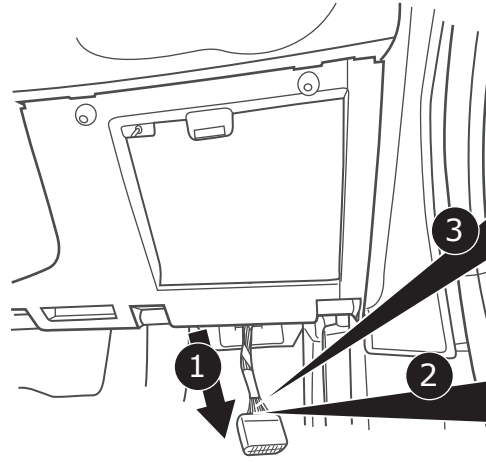
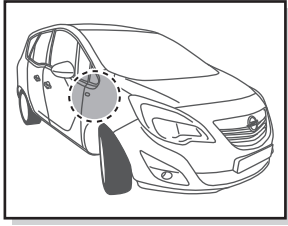
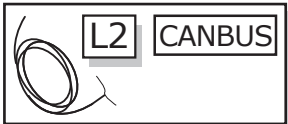


2

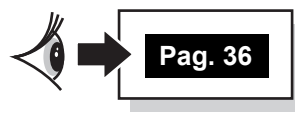


3

10

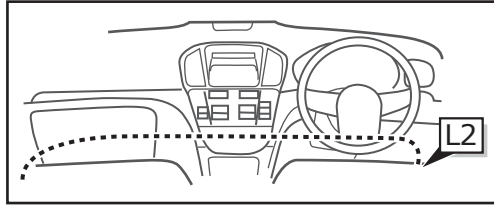
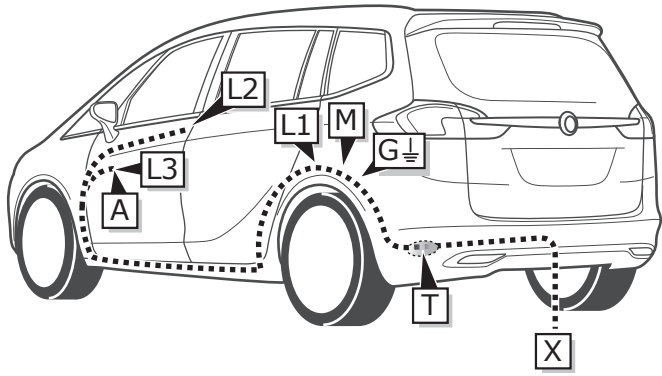


11





INFO

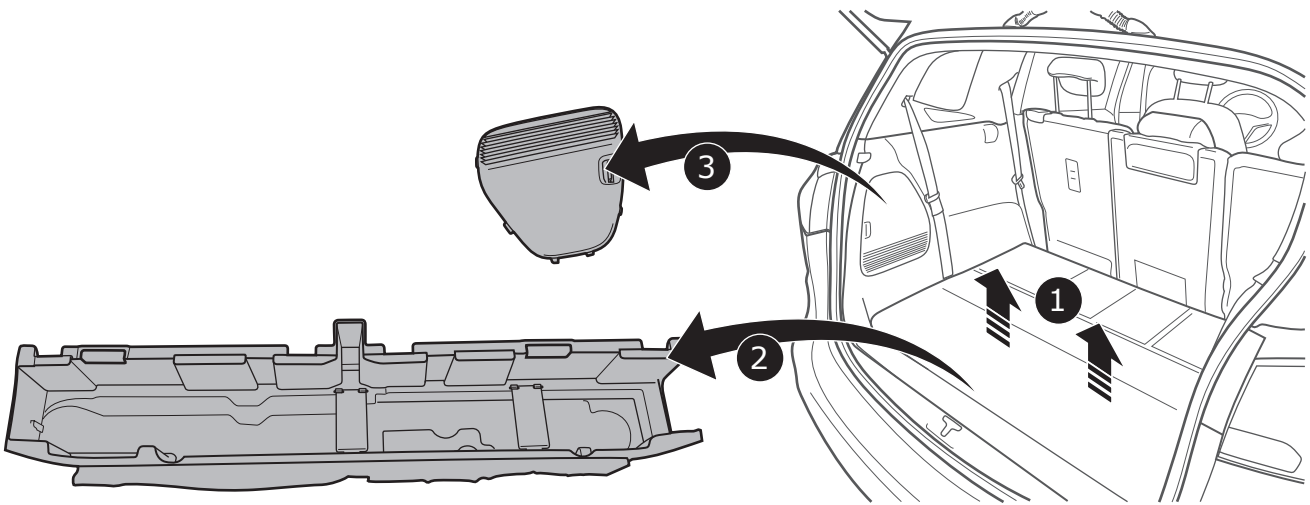


Zafira

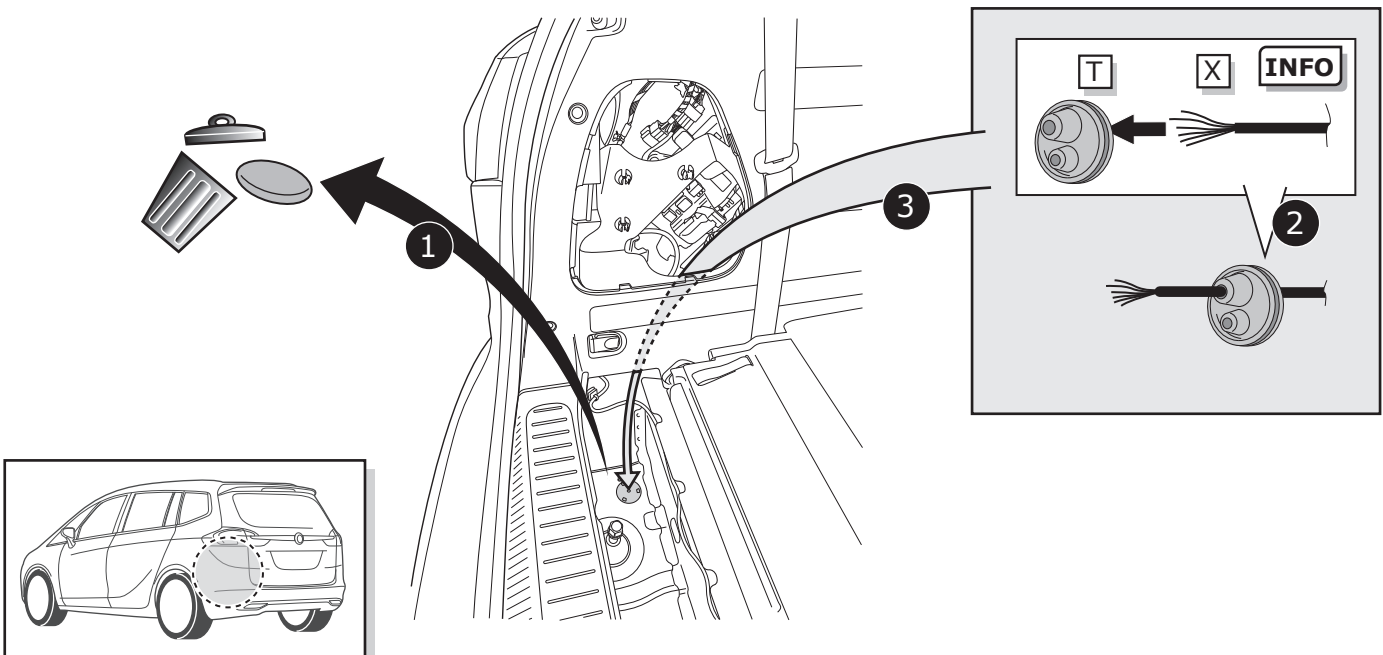
Pag. 8

Pag. 11

1



2

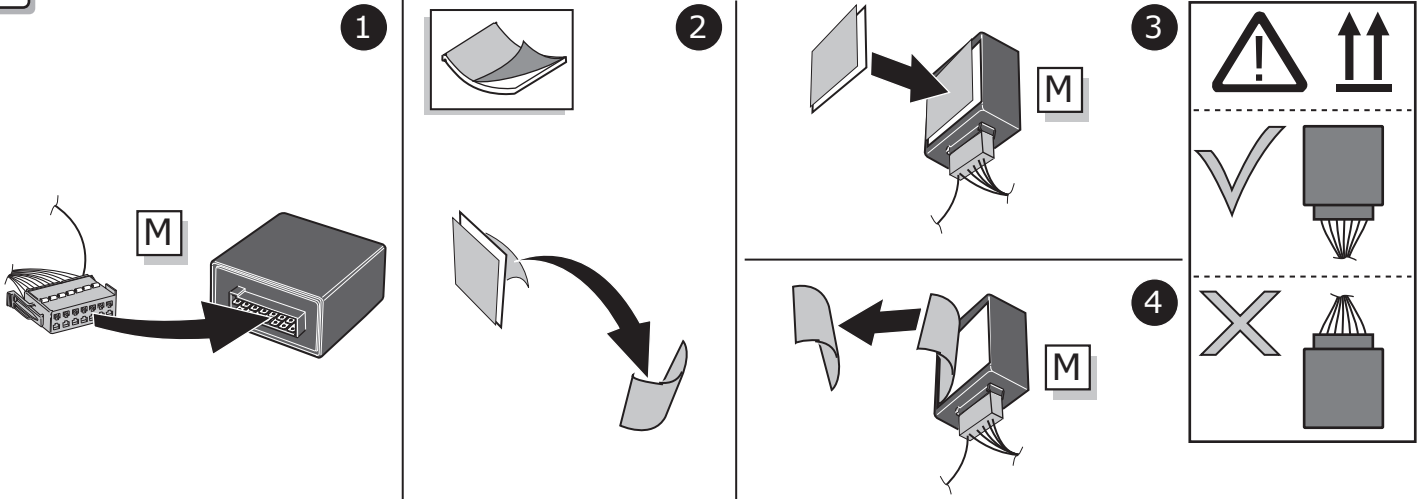




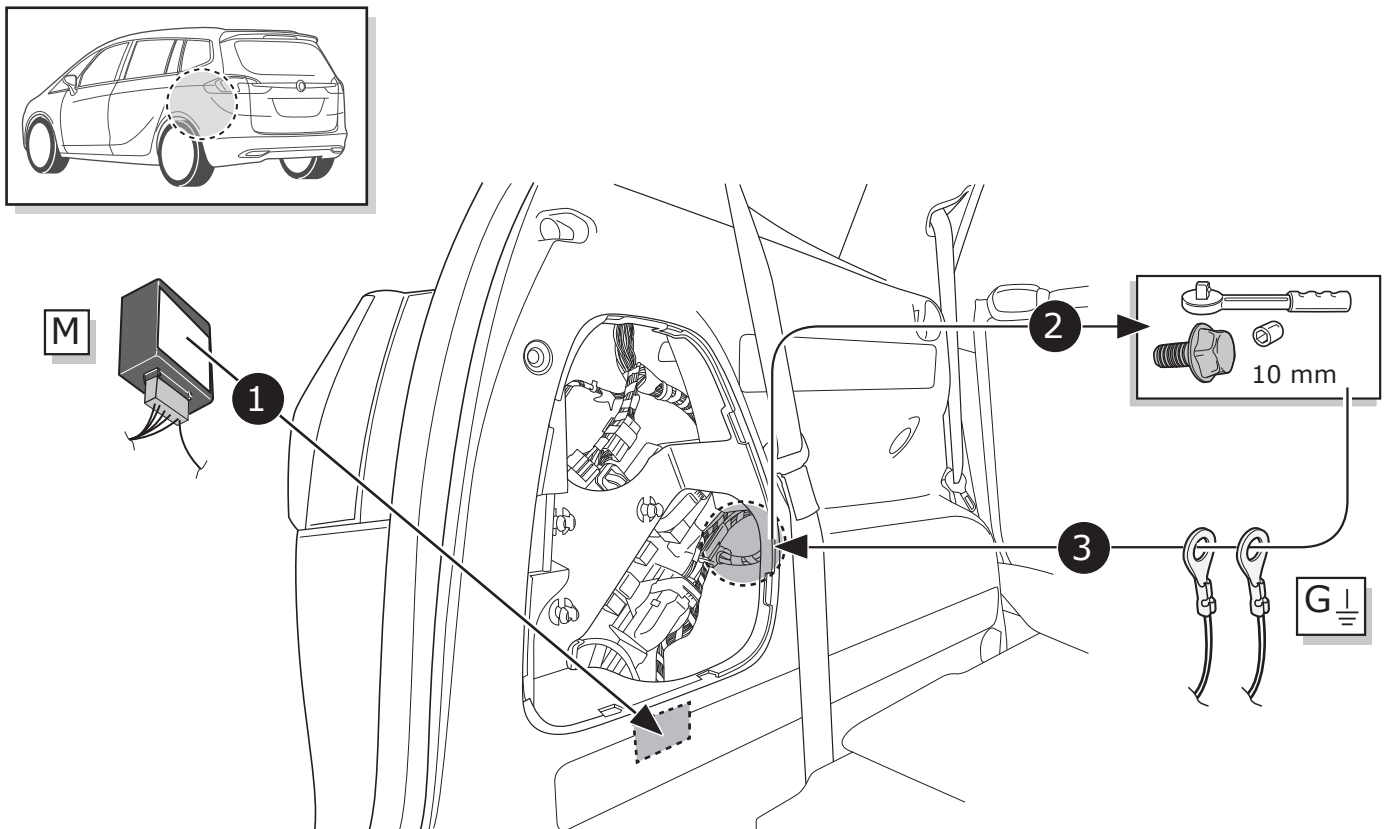
3



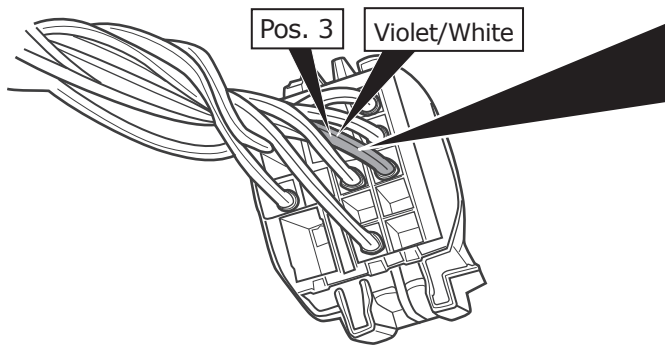
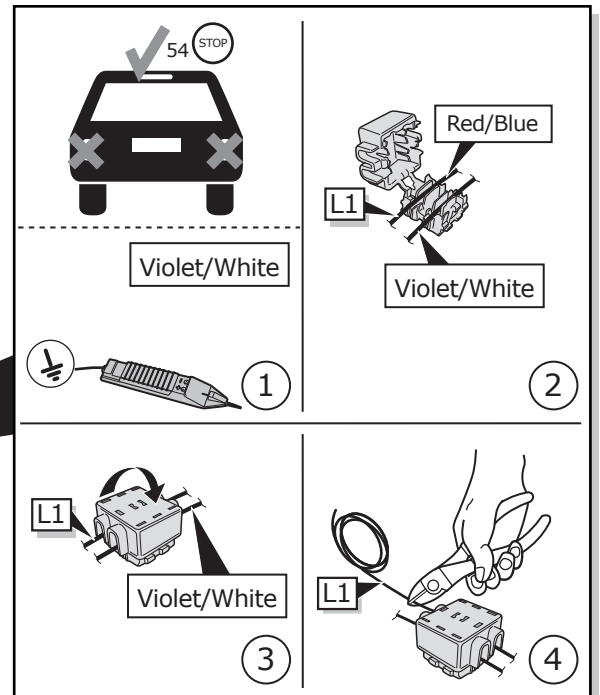
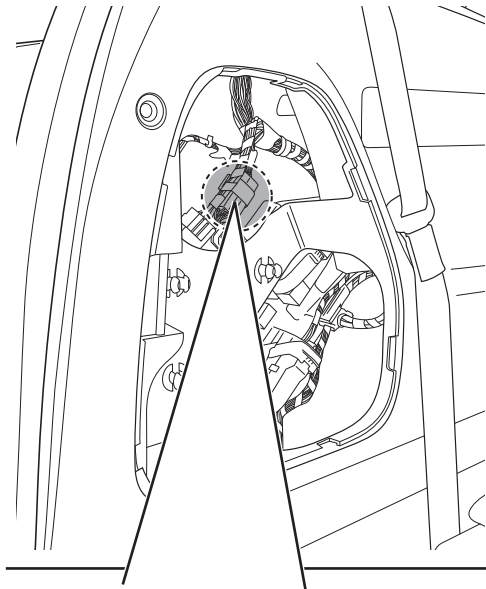
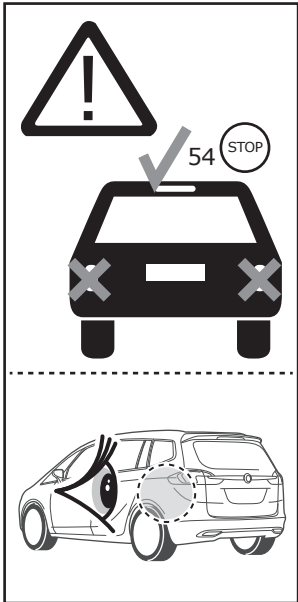
4



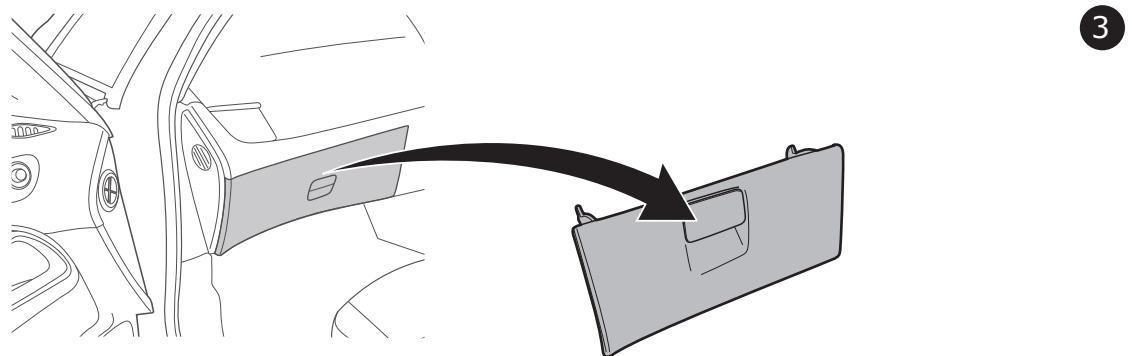
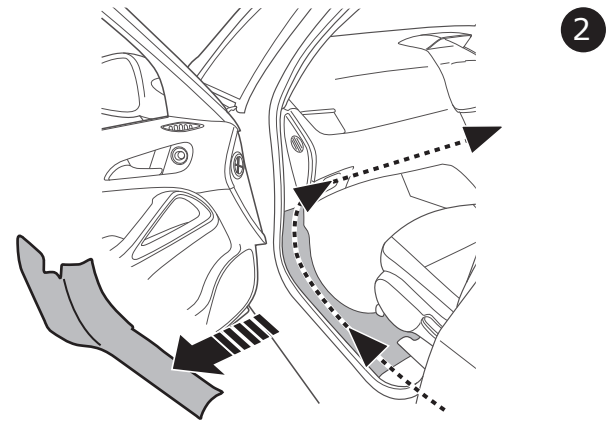
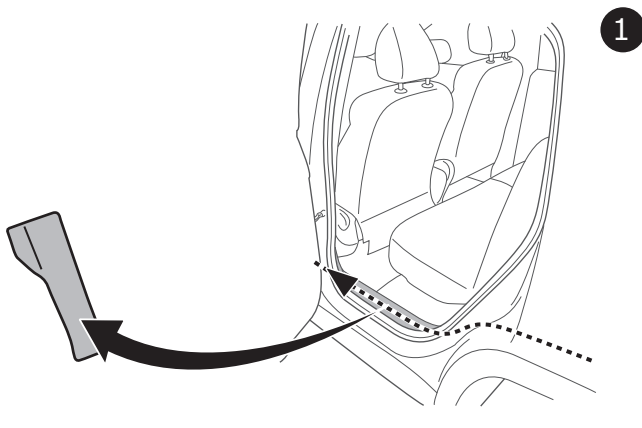
5



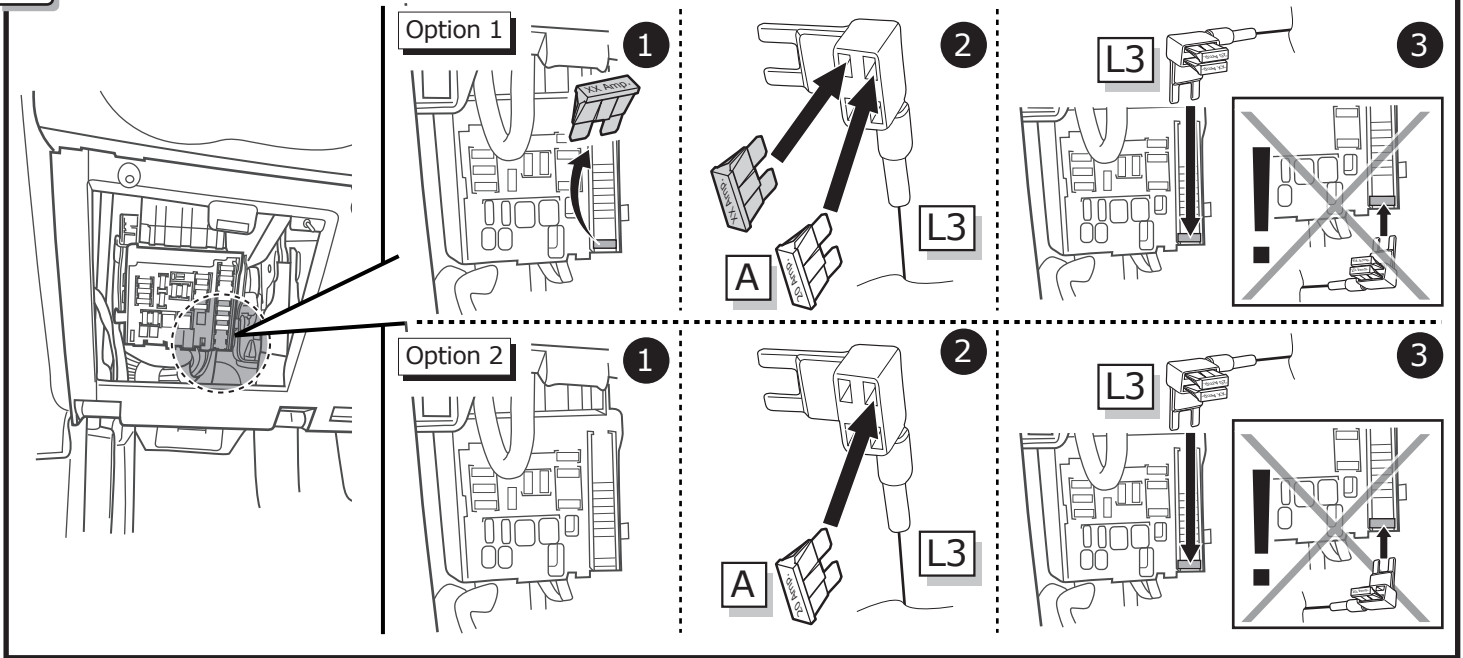
6



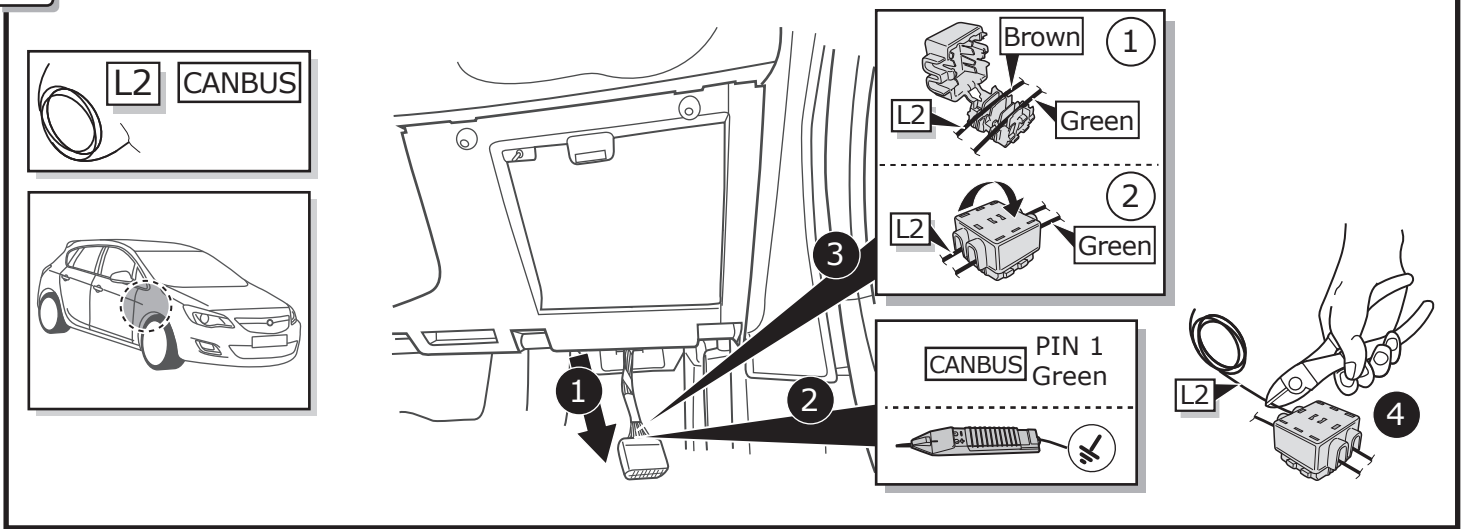
7



8



9



10

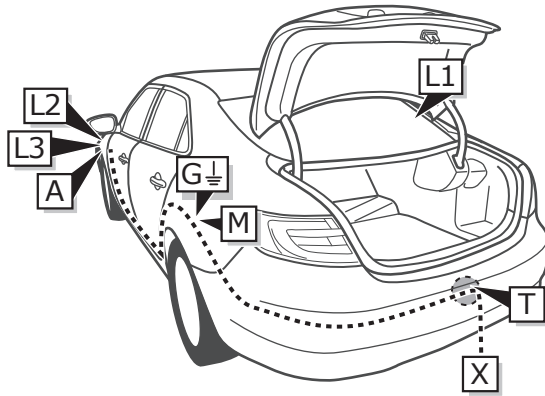


INFO

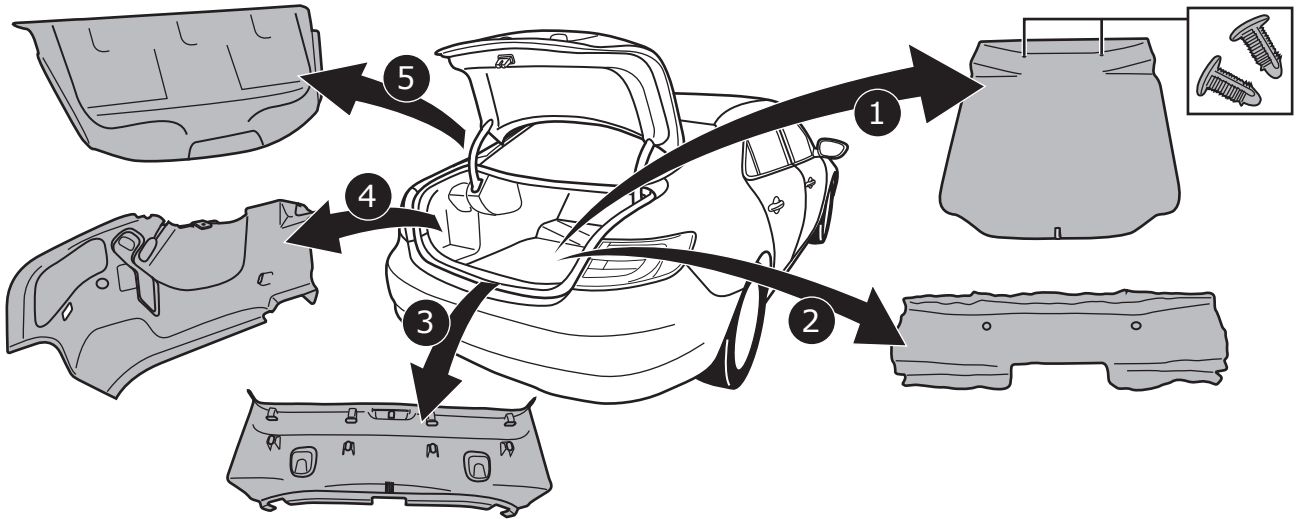
Saab 9-5

Pag. 12

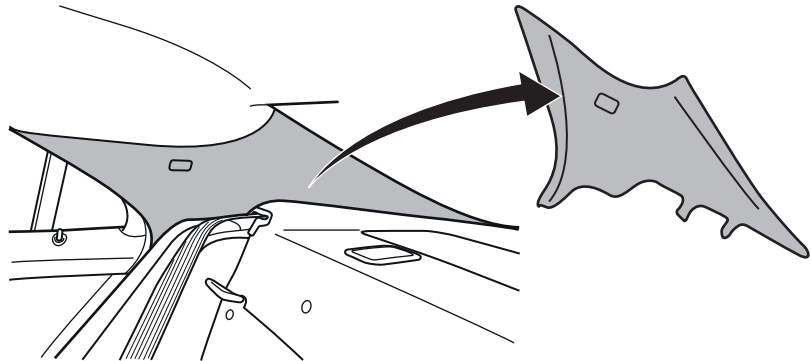
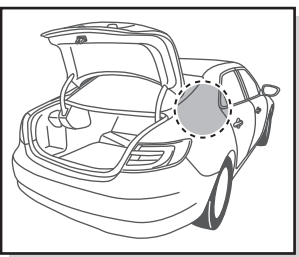
Pag. 15



1

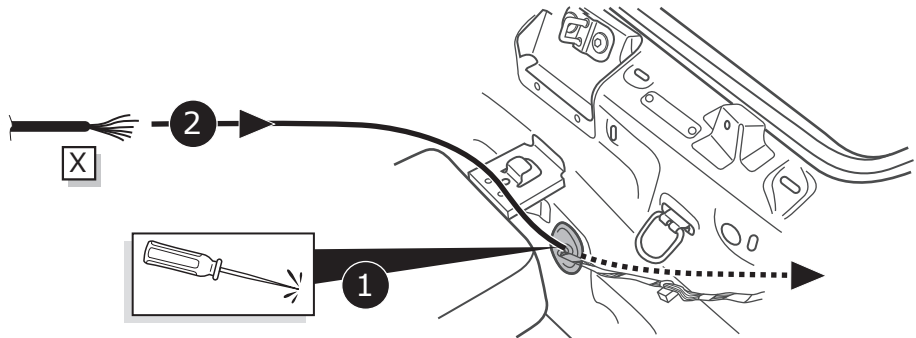
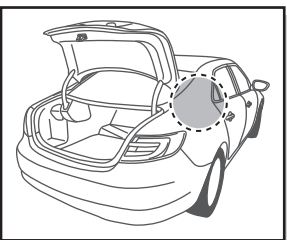


2



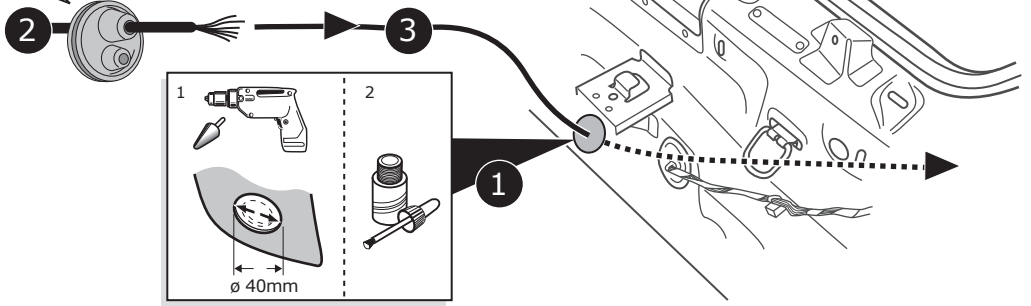
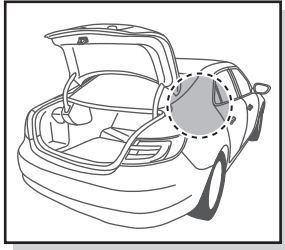
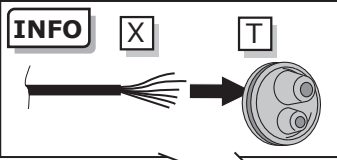
3

Option 1



4

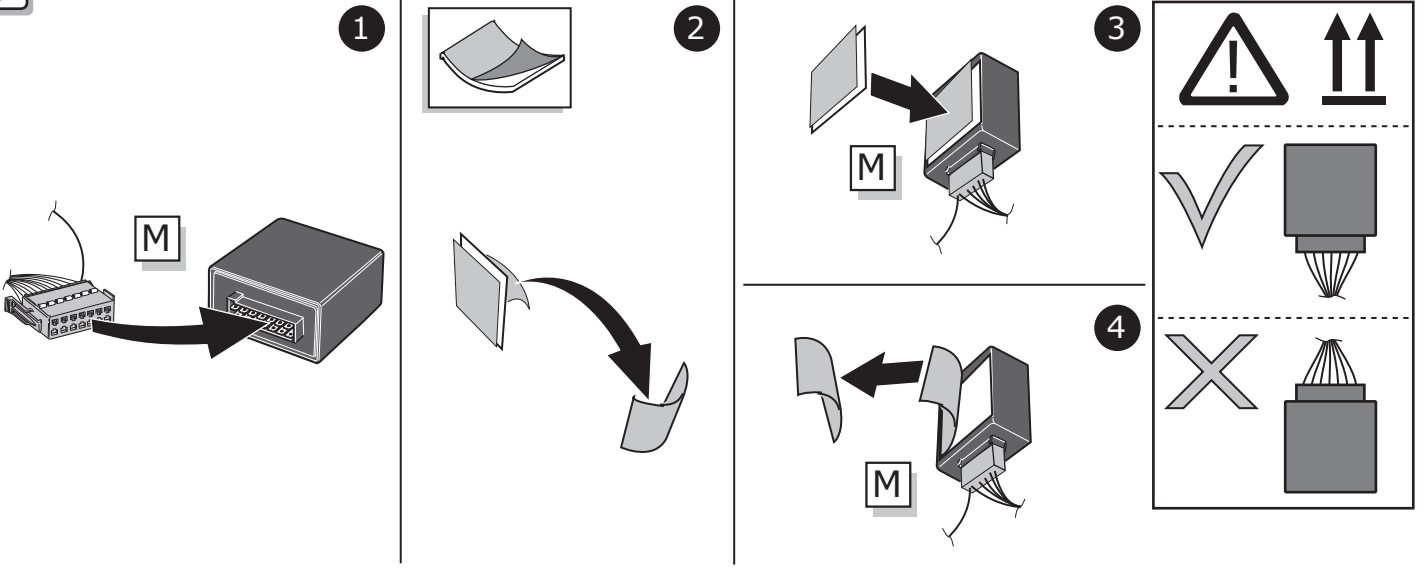
Option 2



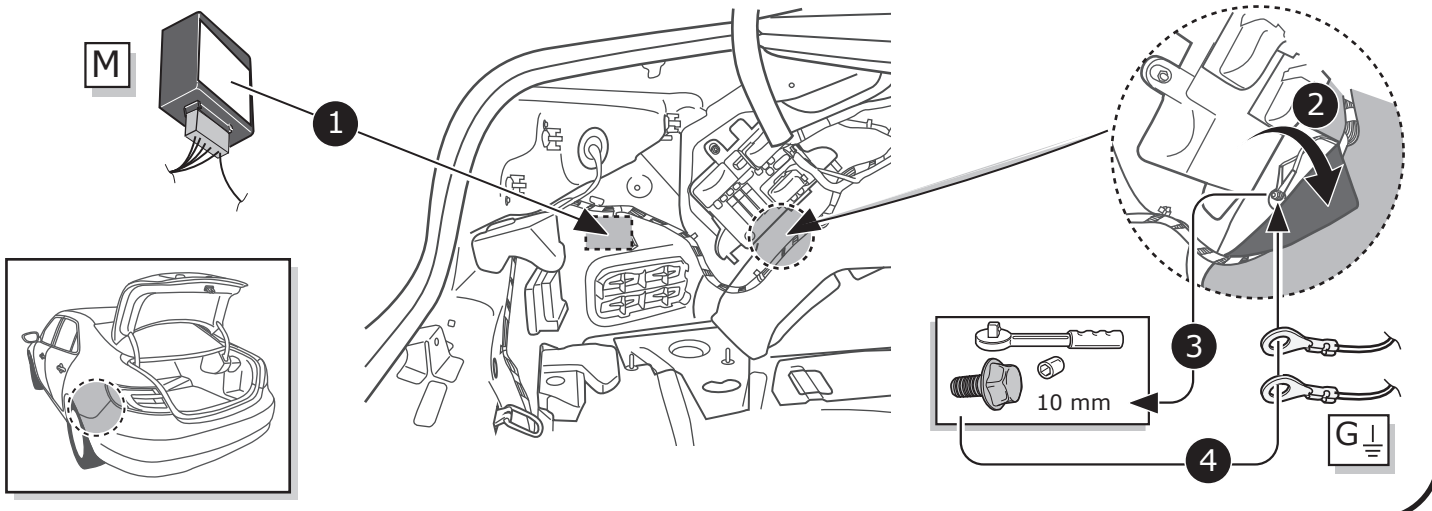
5



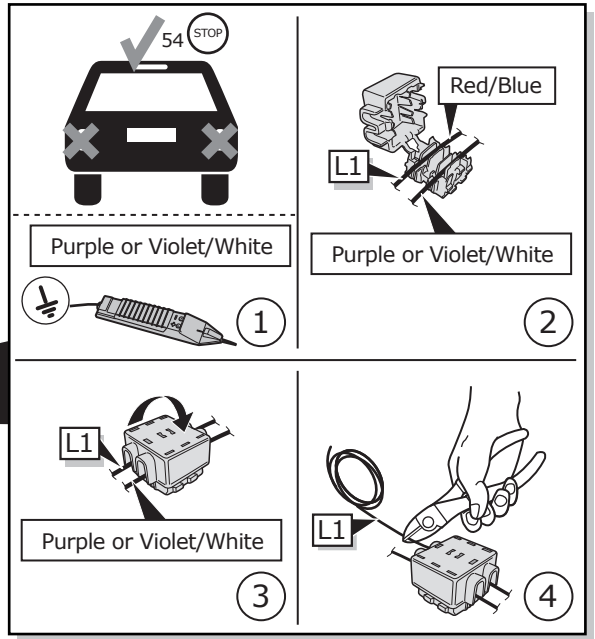
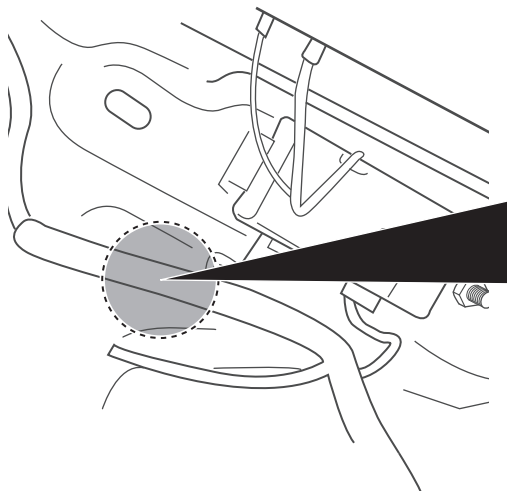
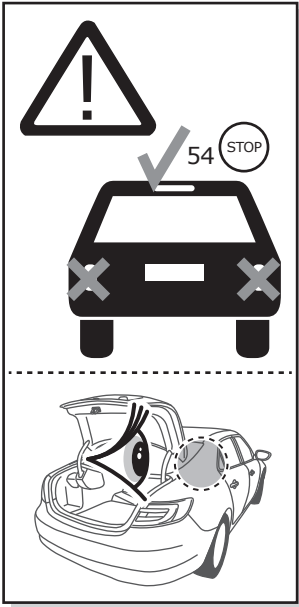
6



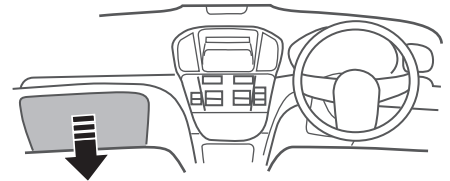
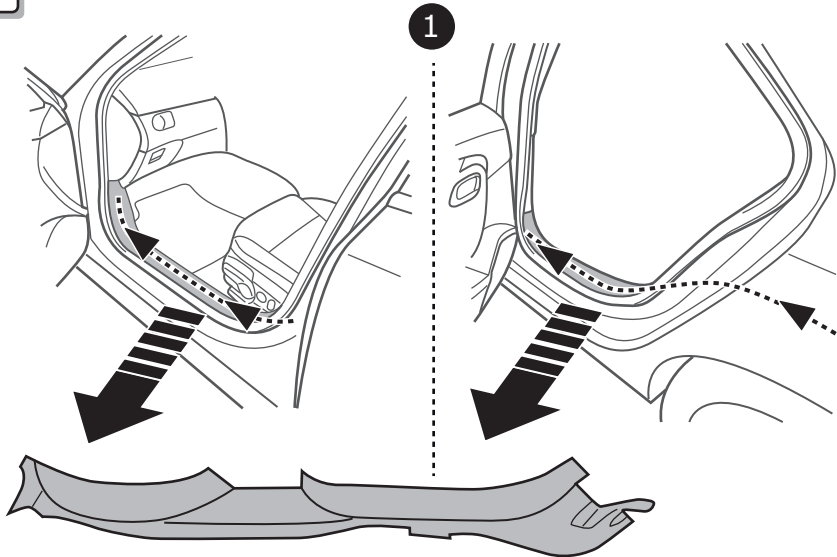
7



8

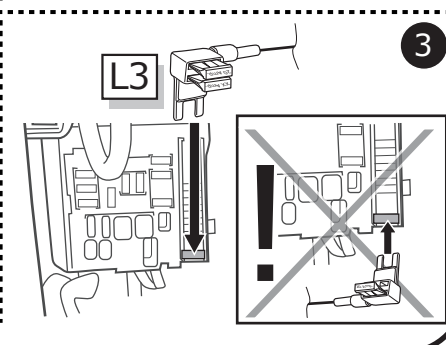
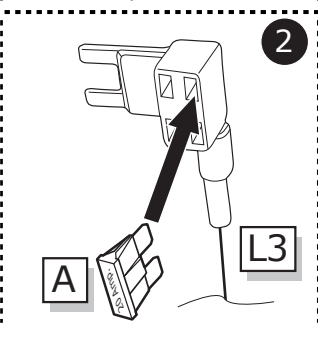
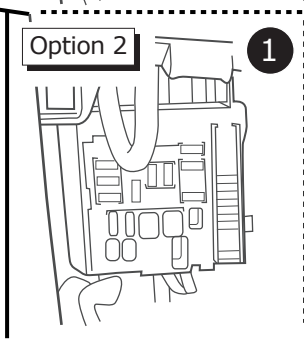
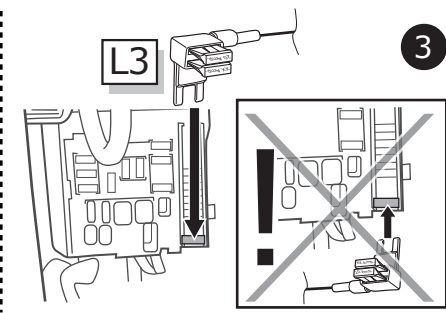
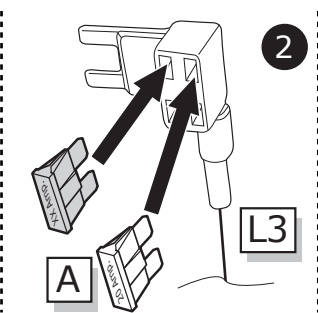
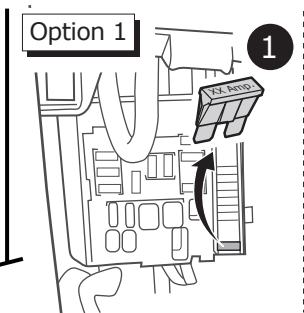
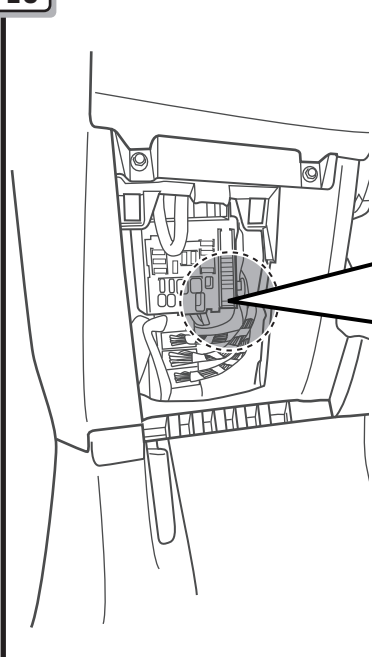


9



2

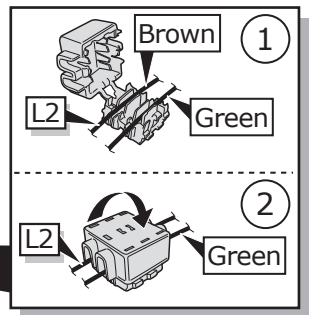
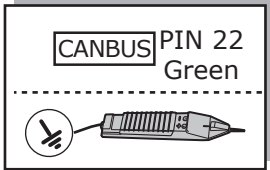
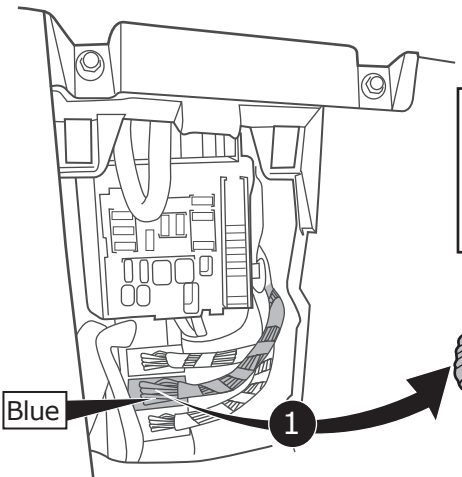
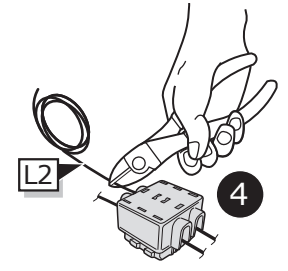
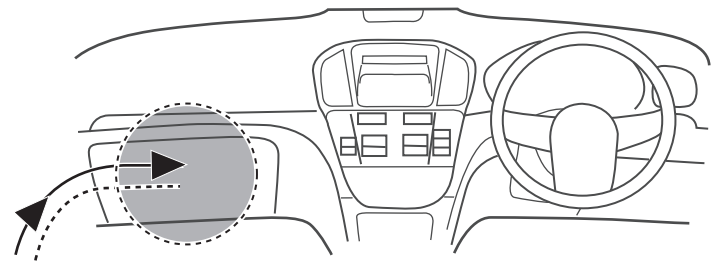
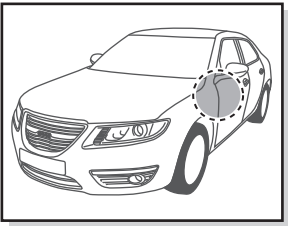
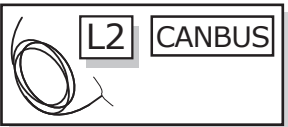
10





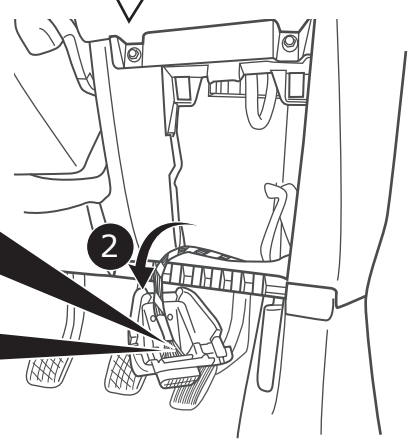
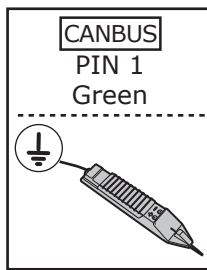
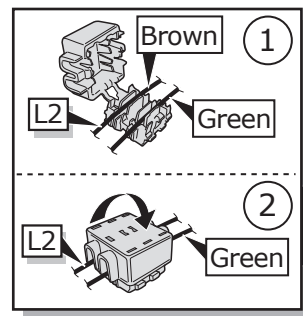
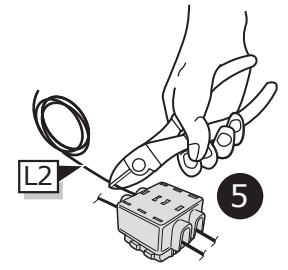
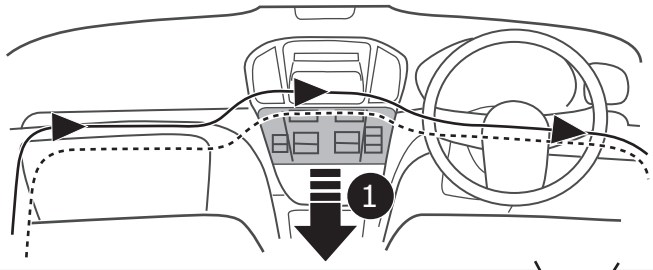
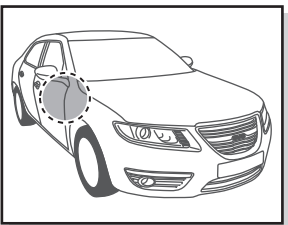
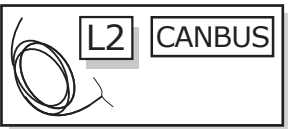
11

### Option 1



12

### Option 2



13



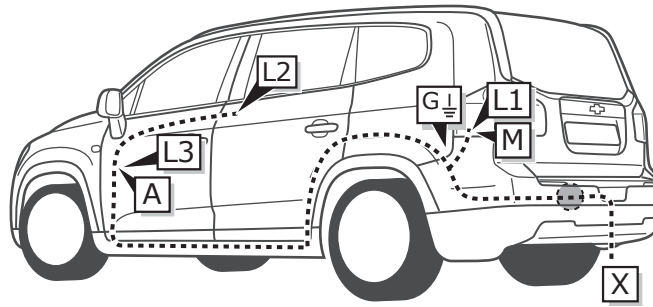


INFO

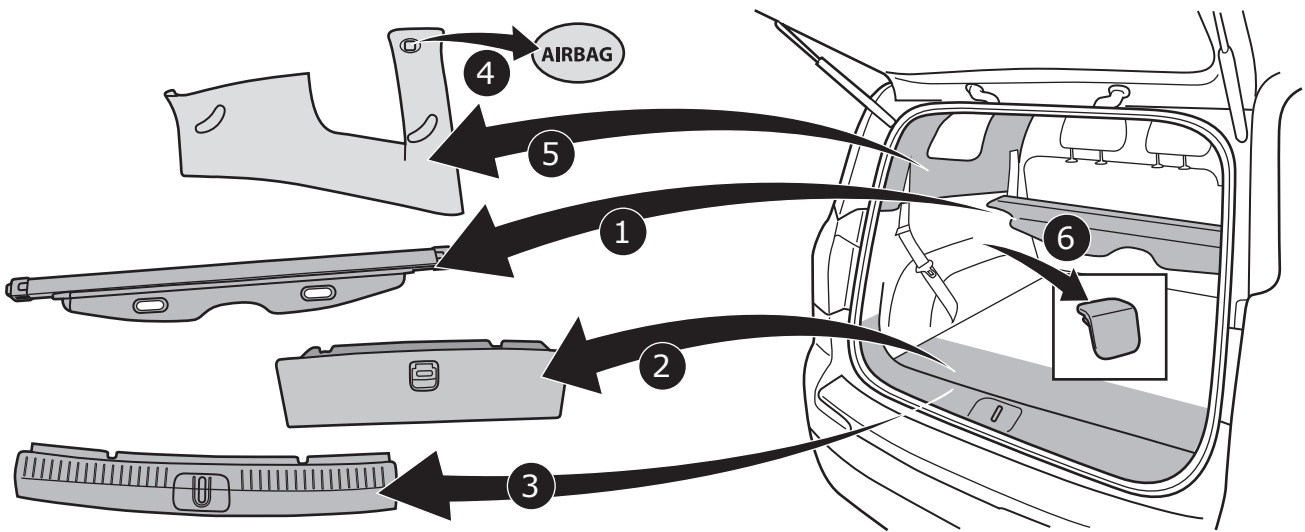
Orlando

Pag. 16

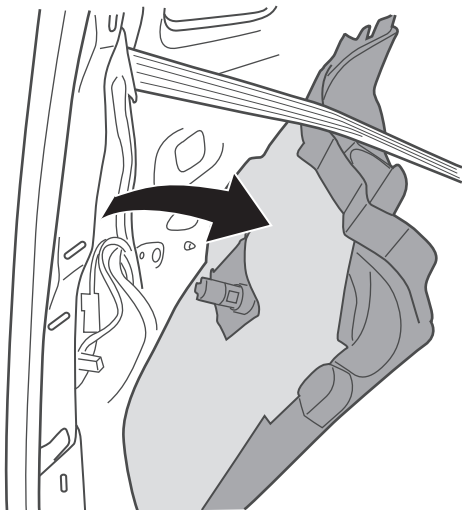
Pag. 19



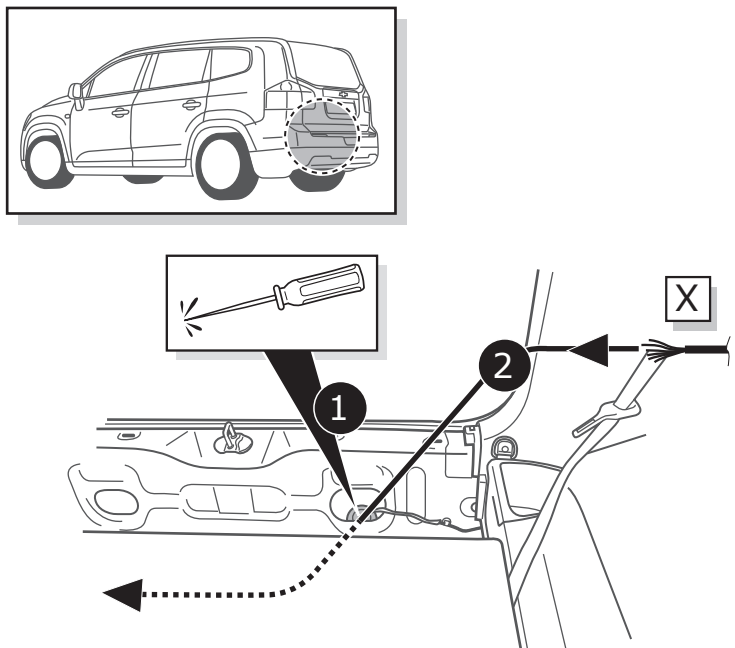
1



2



3



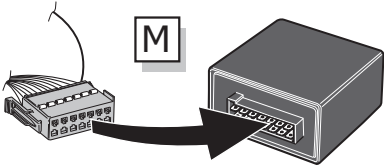
4



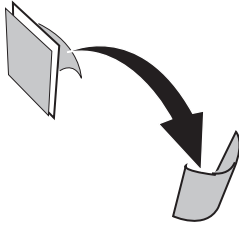
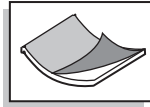
Pag. 35

5

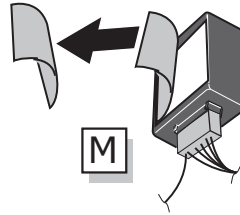
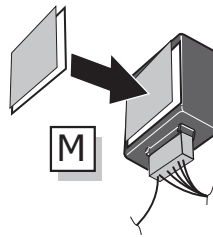
1



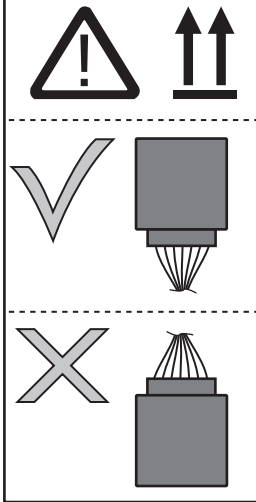
2



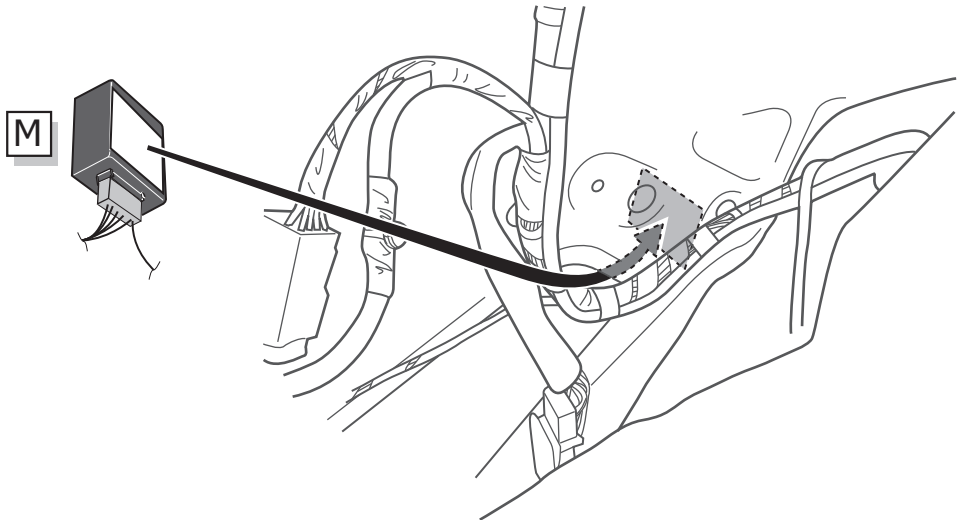
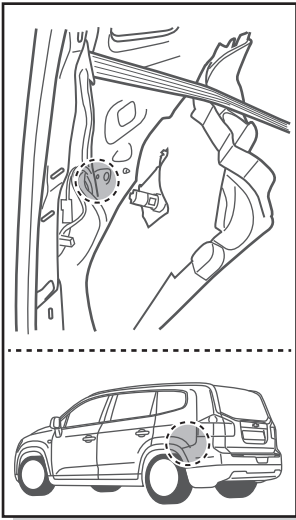
3



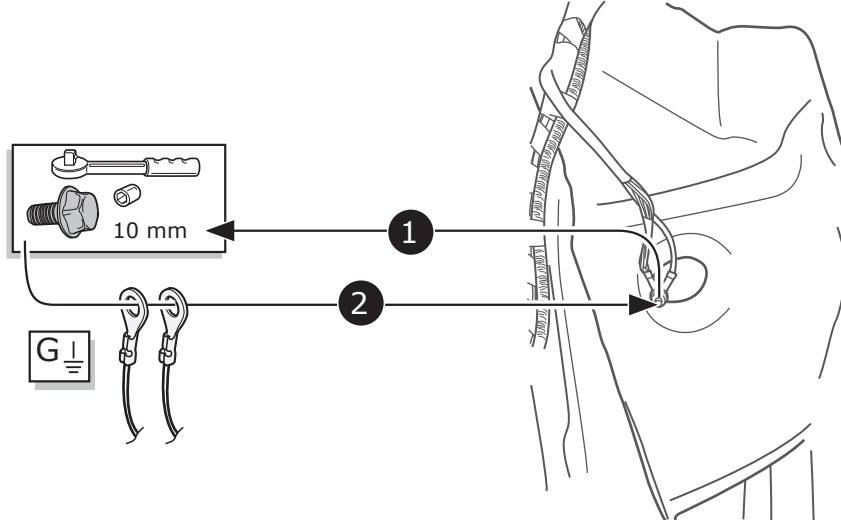
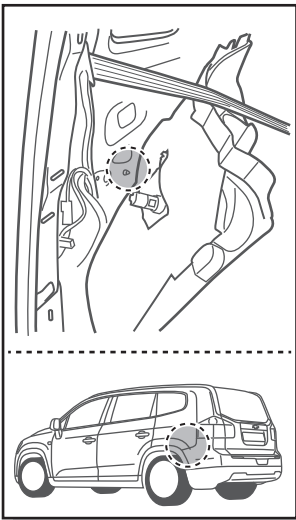
4



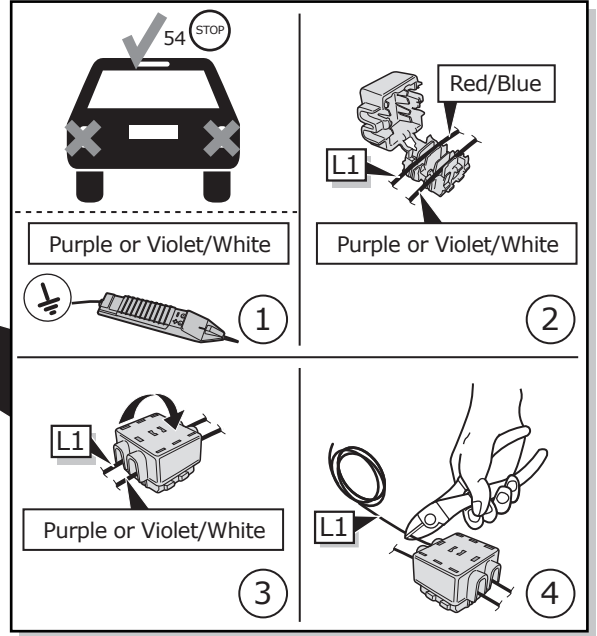
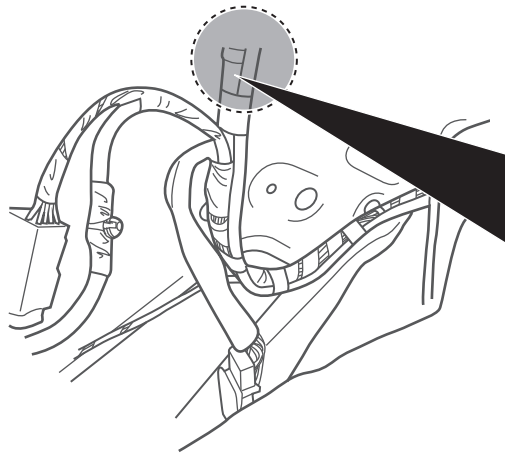
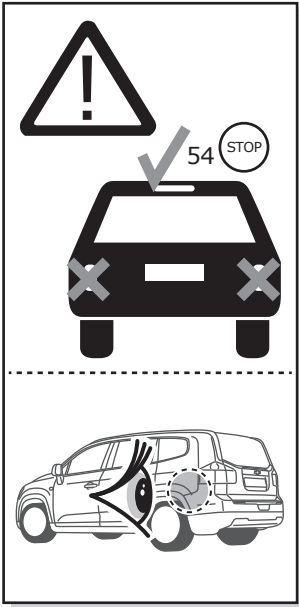
6



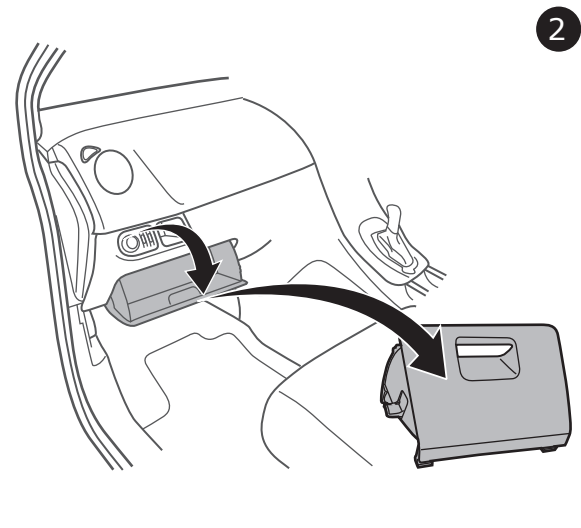
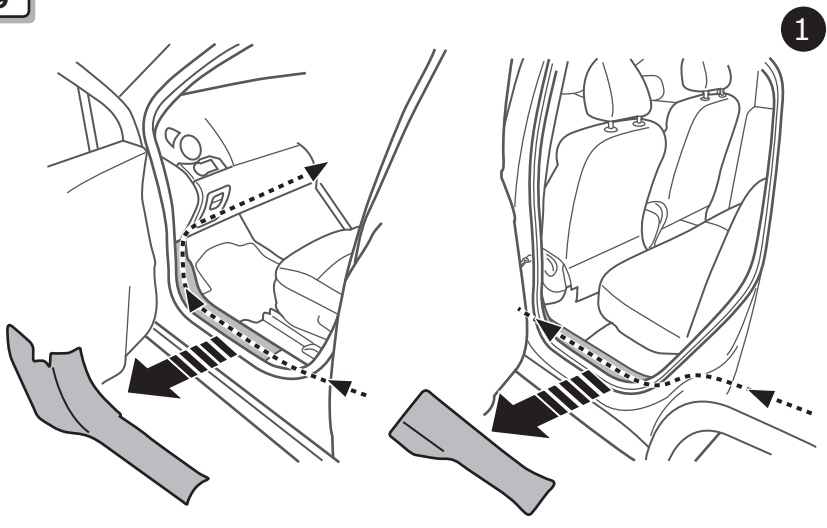
7



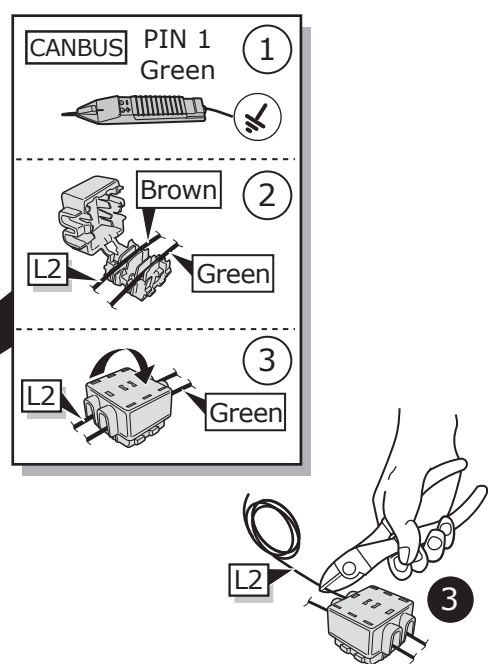
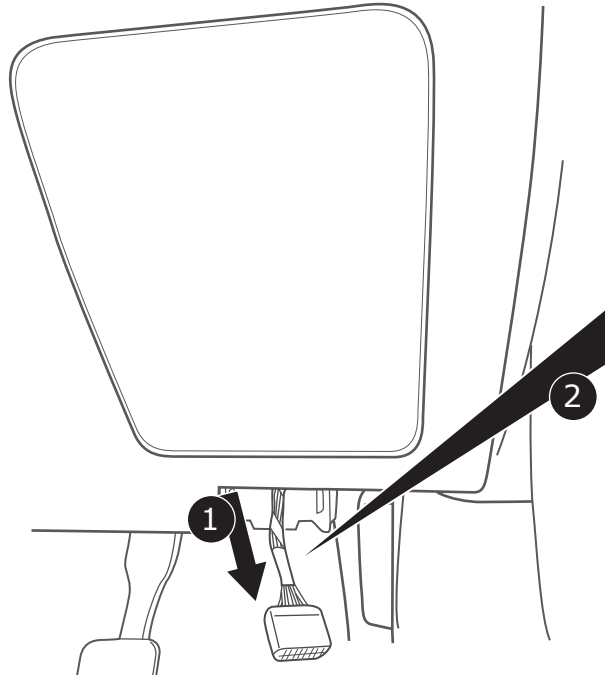
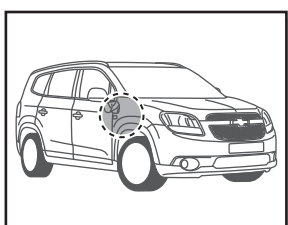
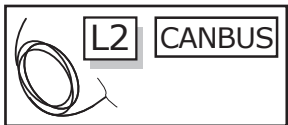
8



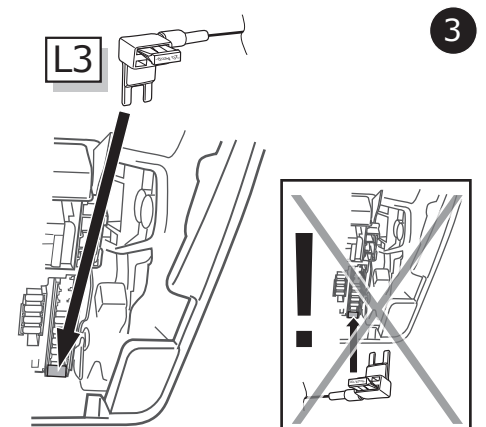
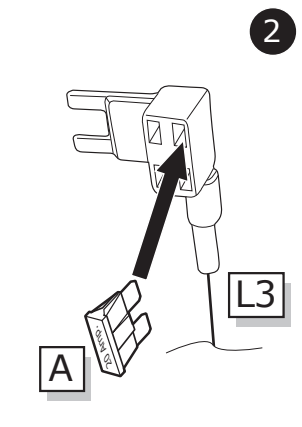
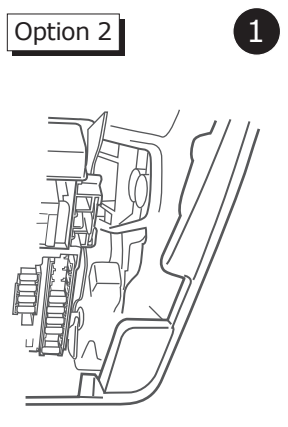
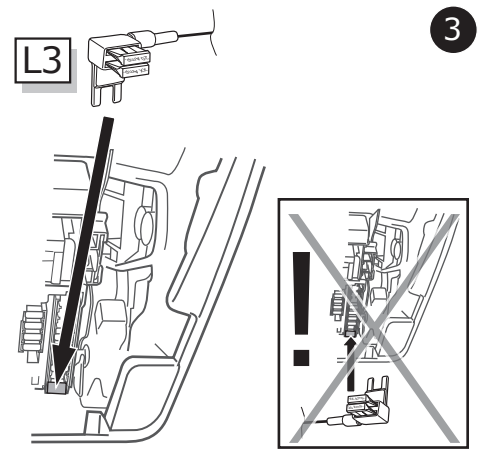
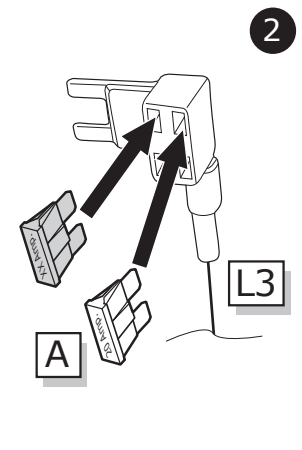
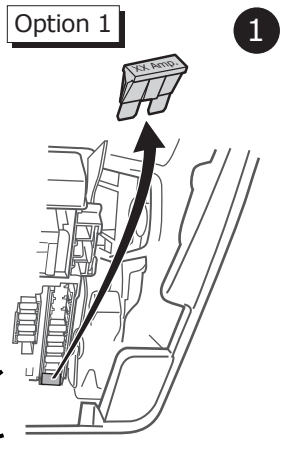
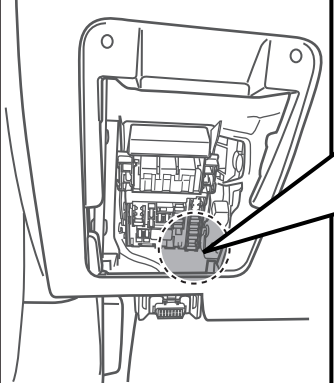
9



10



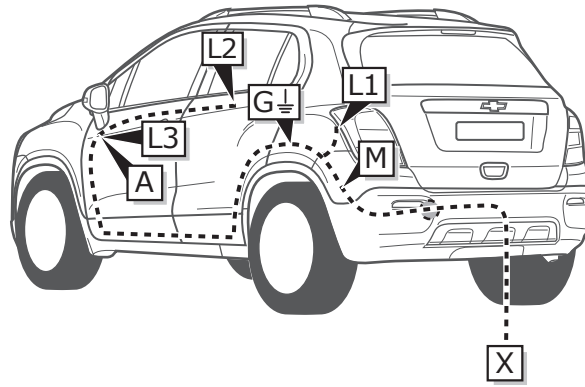
11



12

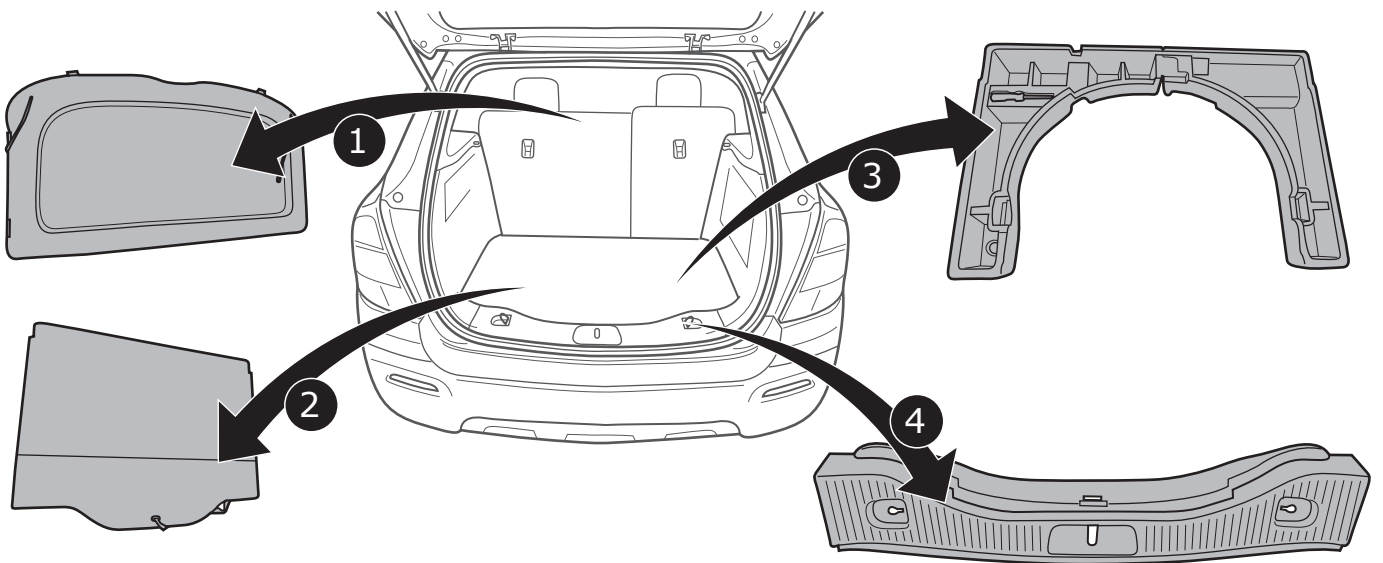


INFO

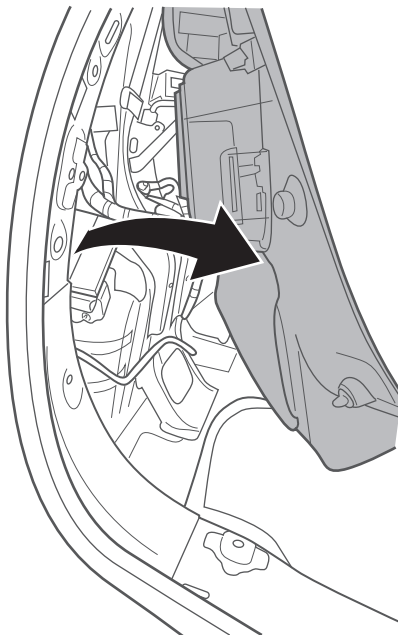


**Trax**  
Pag. 20  
-  
Pag. 23

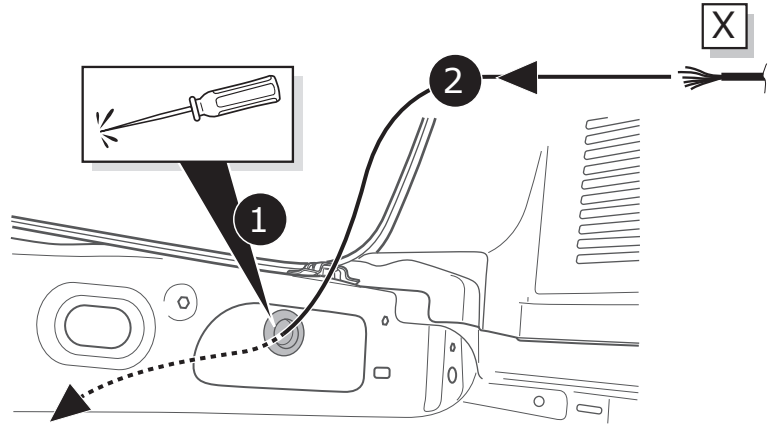
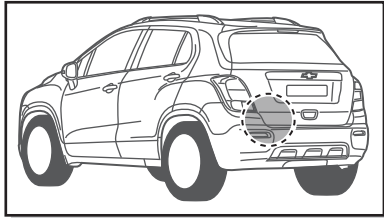
1



2



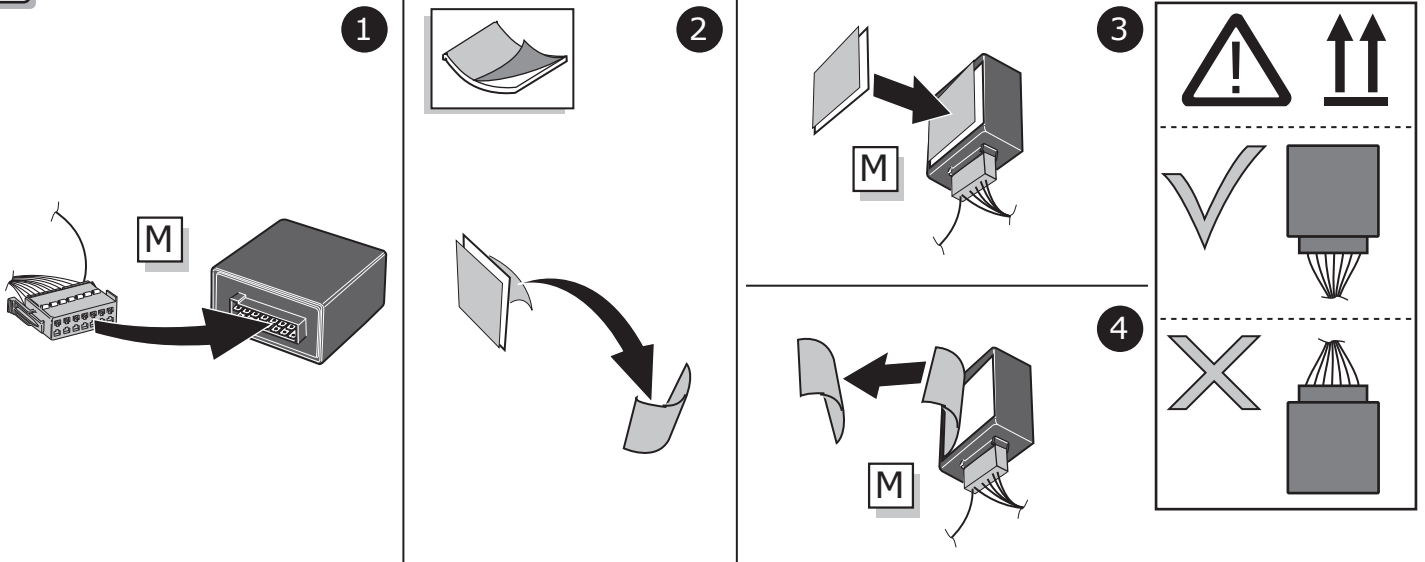
3



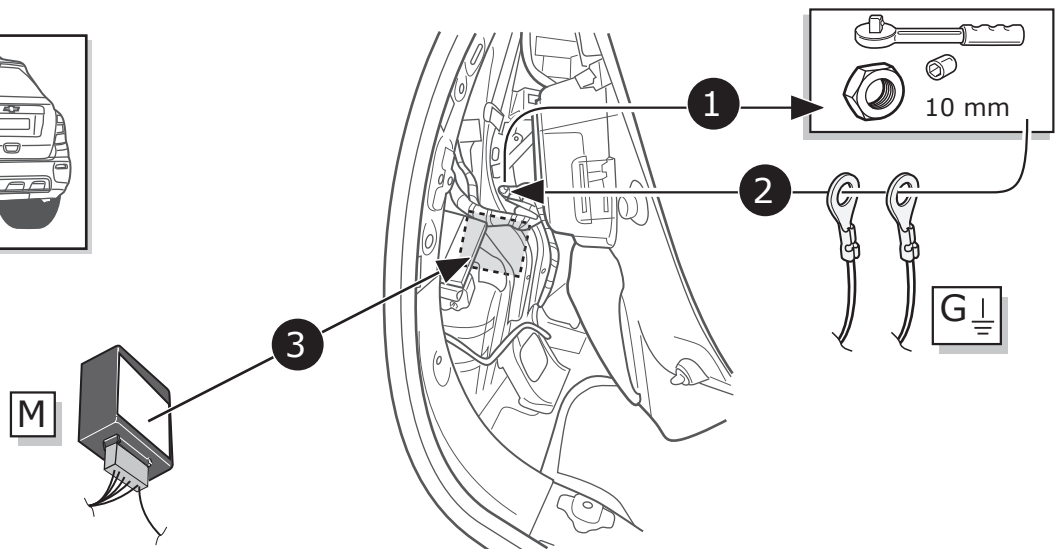
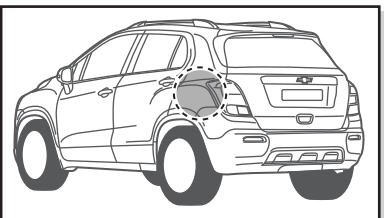
4



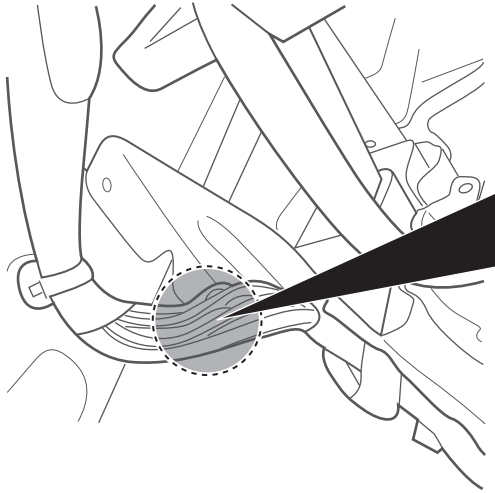
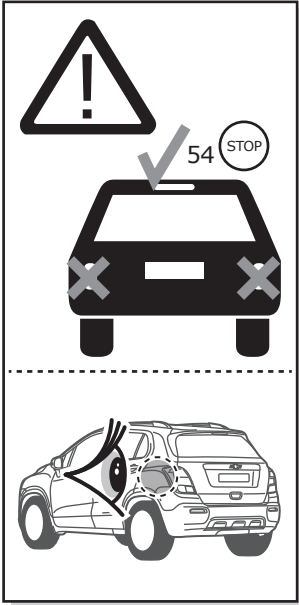
5



6



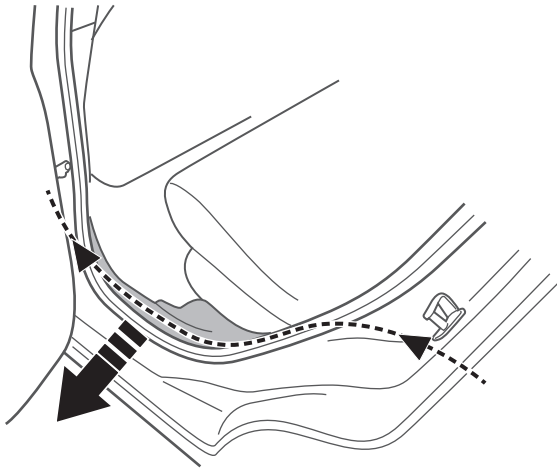
7



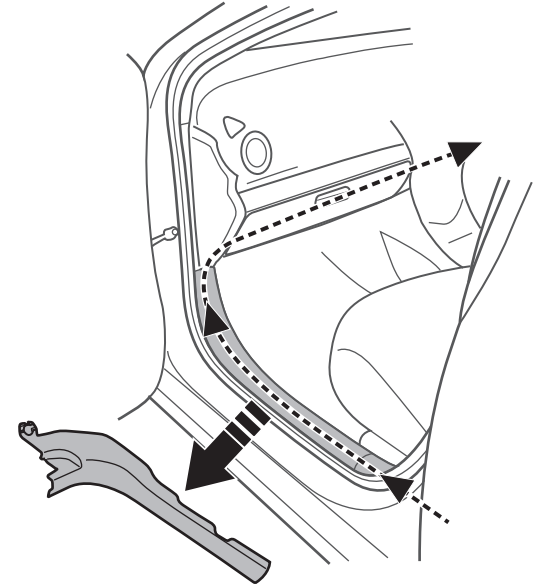
<p>Purple or Violet/White</p>	<p>Purple or Violet/White</p>
<p>Purple or Violet/White</p>	

8

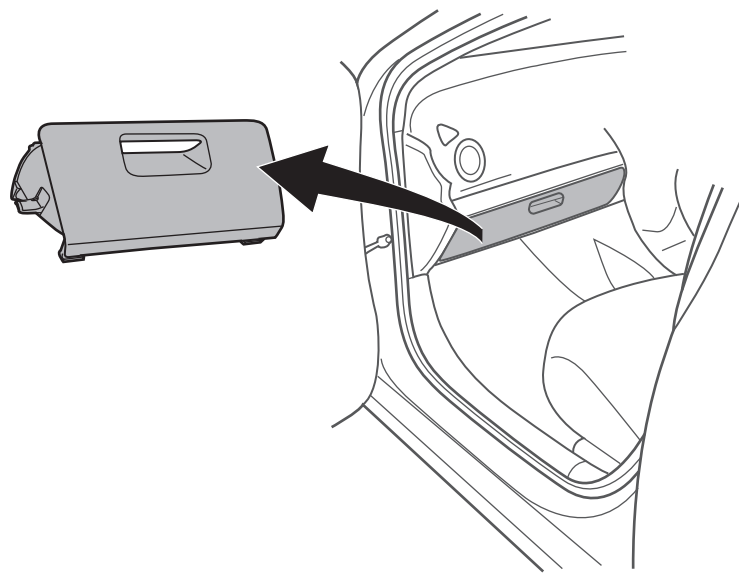
1



2

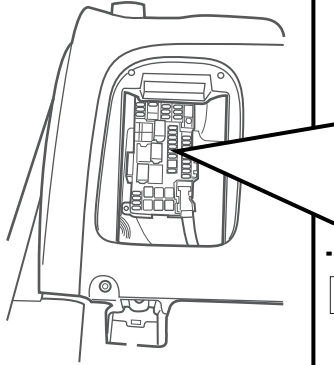


3



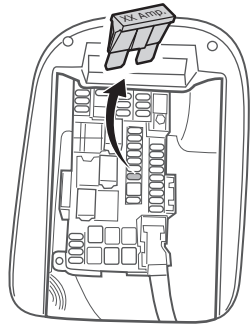


9

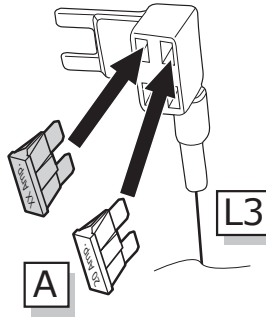


Option 1

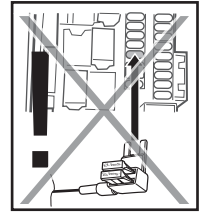
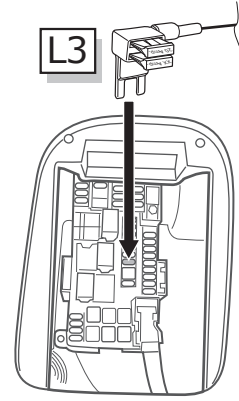
1



2

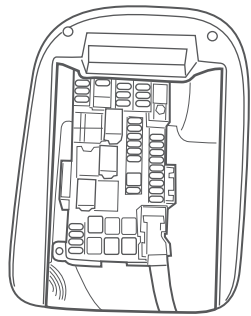


3

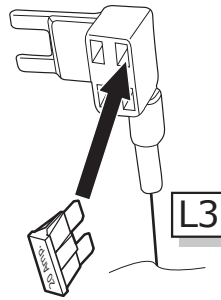


Option 2

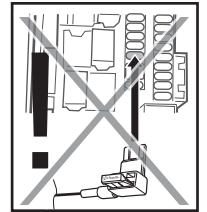
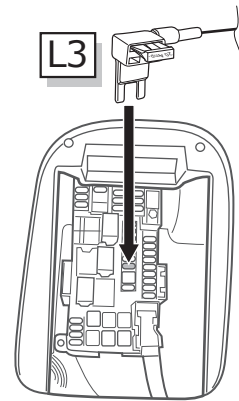
1



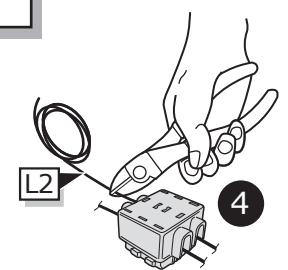
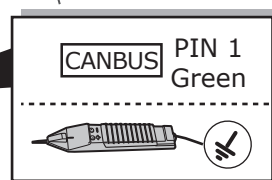
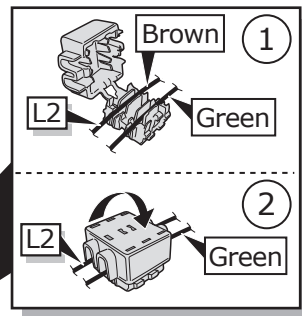
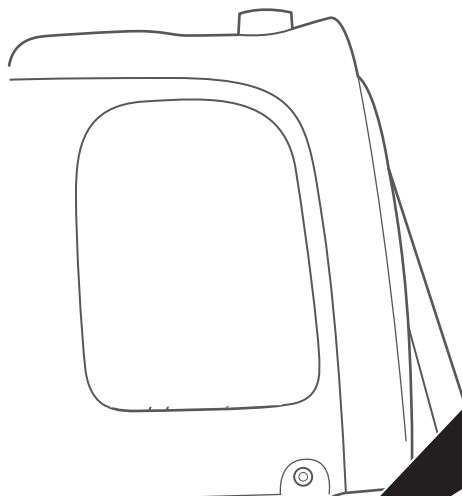
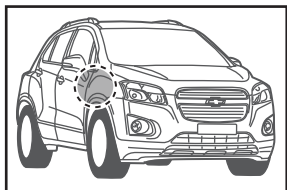
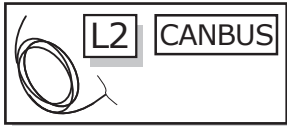
2



3



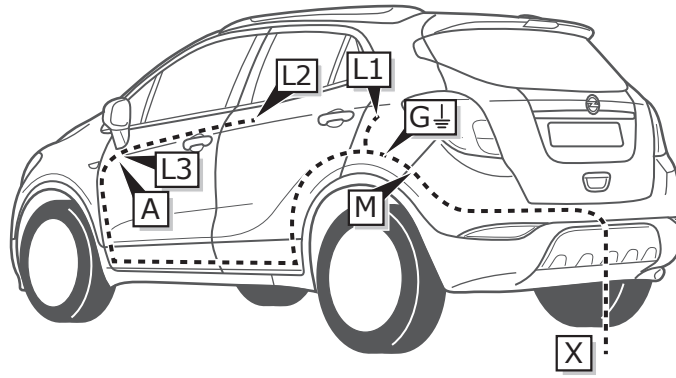
10



11



INFO

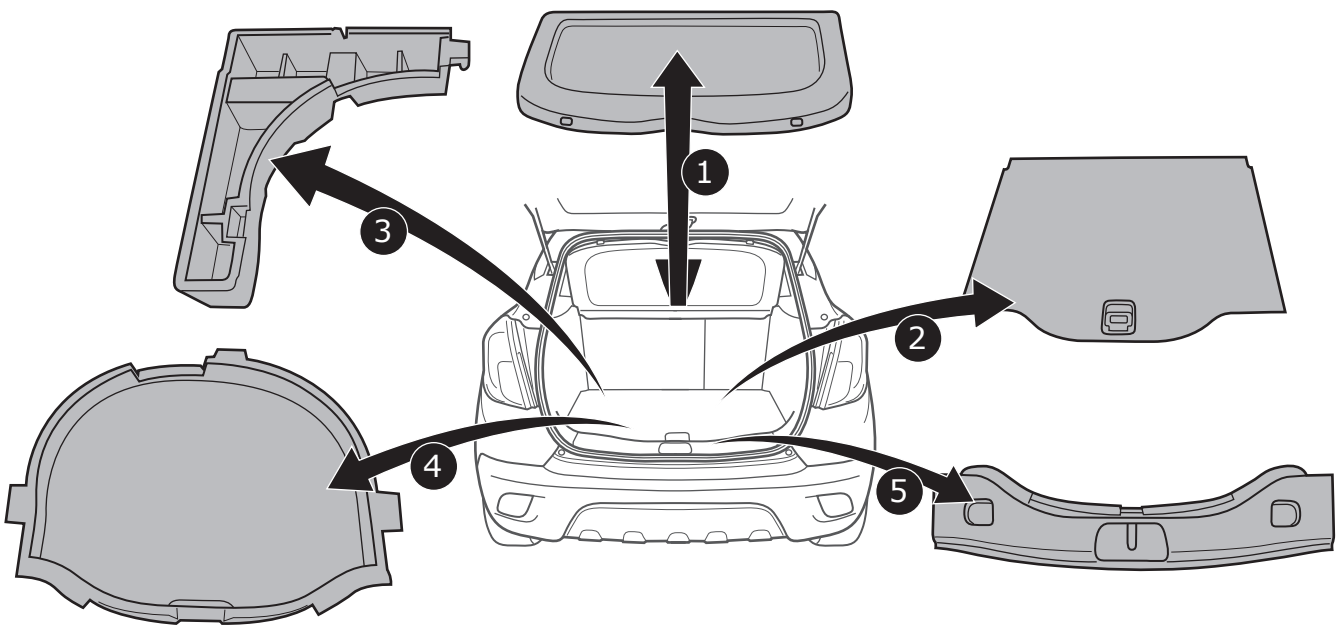


**Mokka**

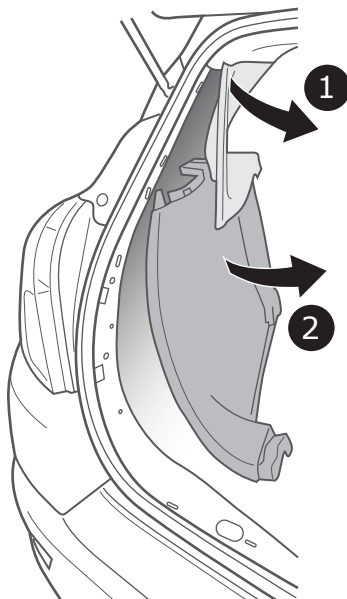
Pag. 24

Pag. 30

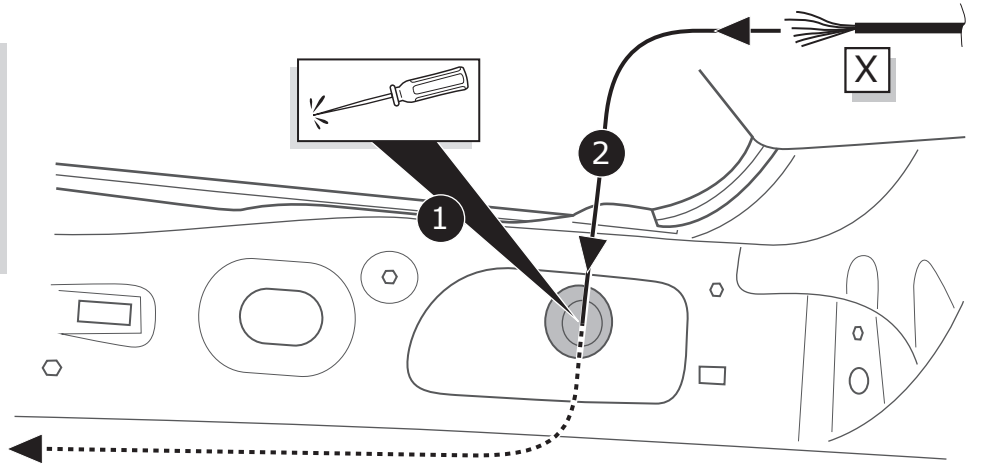
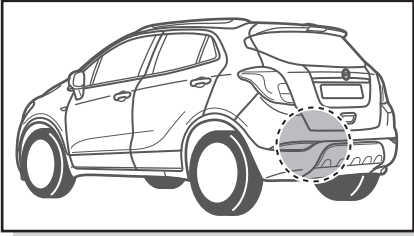
1



2



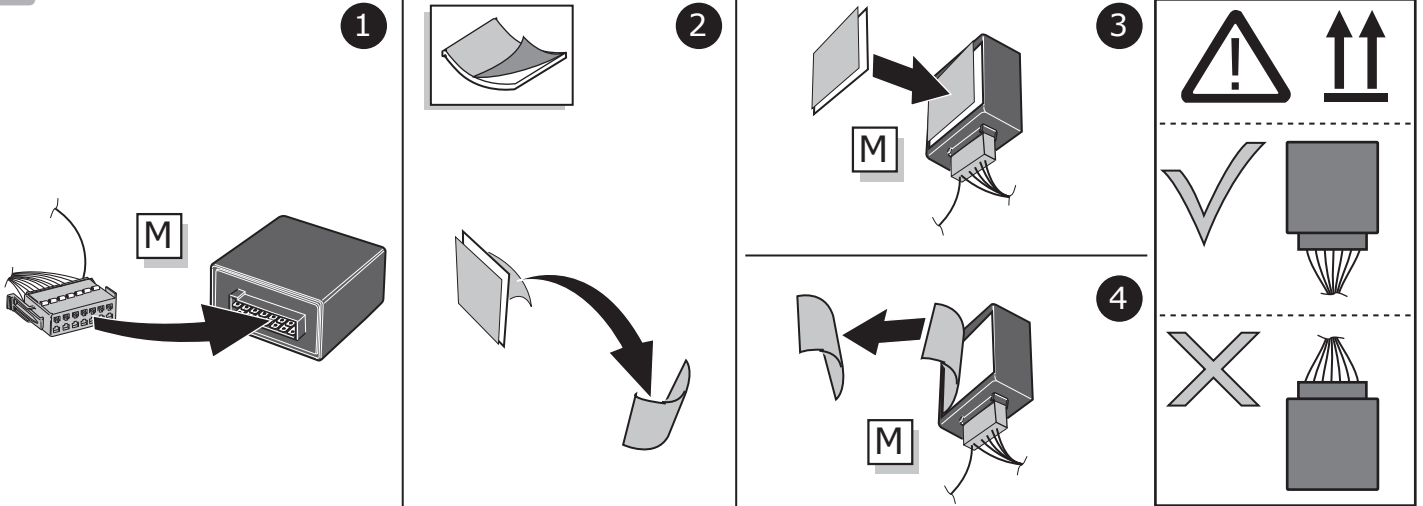
3



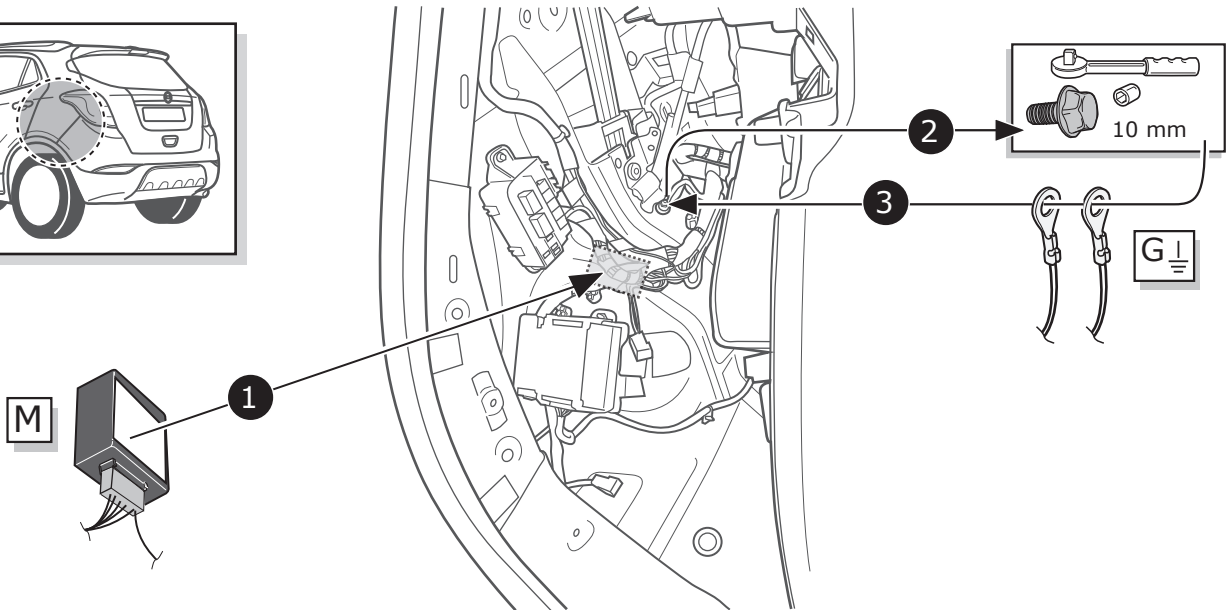
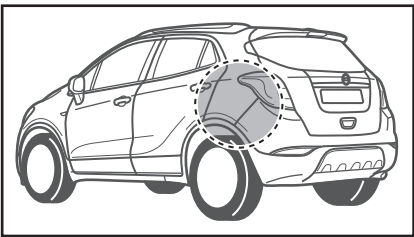
4



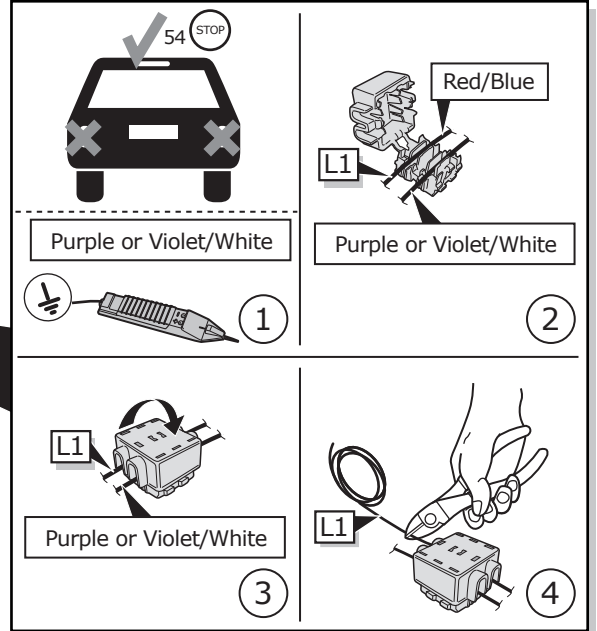
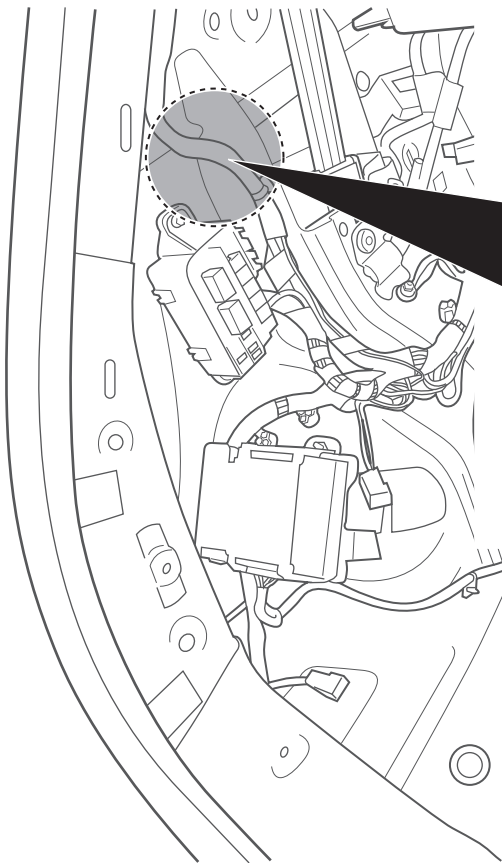
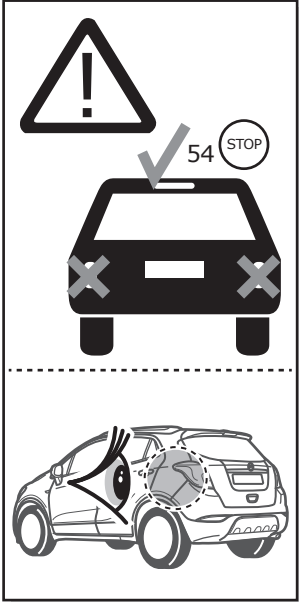
5



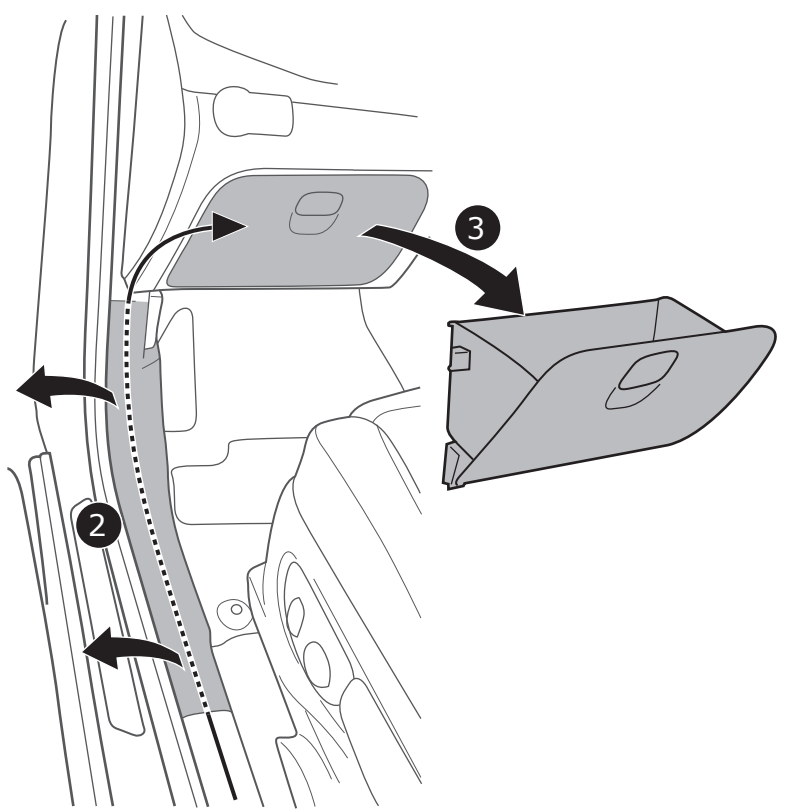
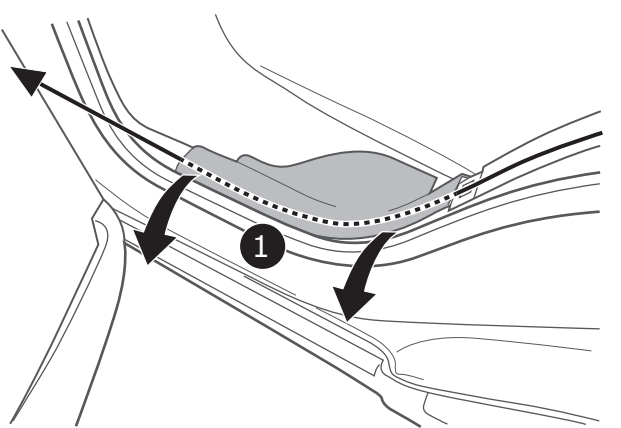
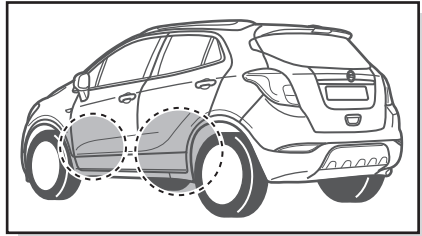
6



7



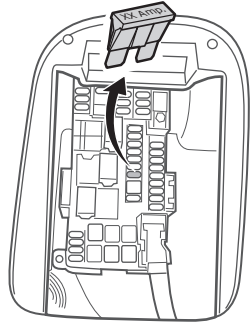
8



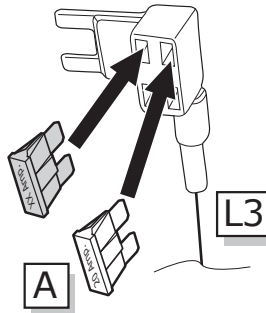
# Opel Mokka

Option 1

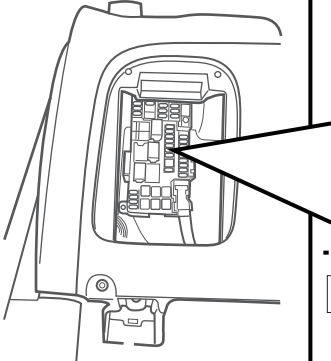
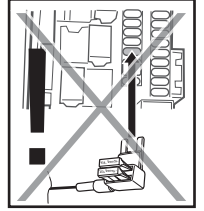
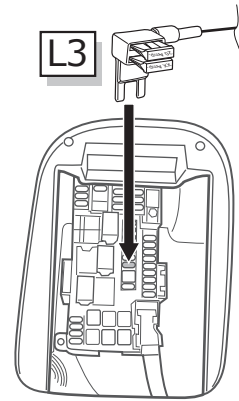
1



2

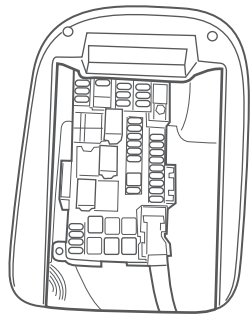


3

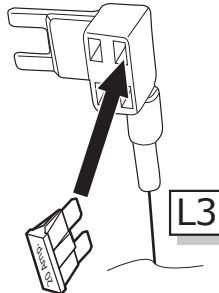


Option 2

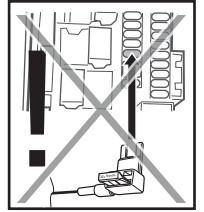
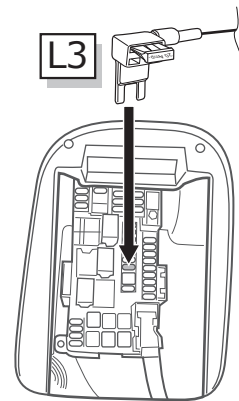
1



2



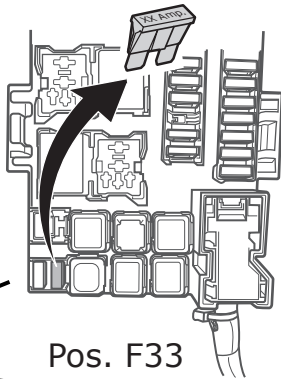
3



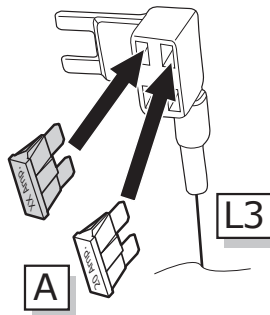
# Opel Mokka X

Option 1

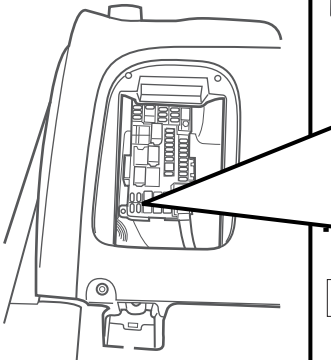
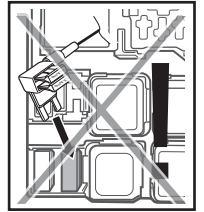
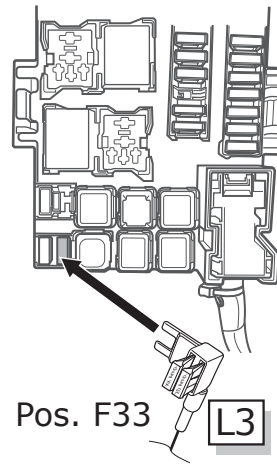
2



3

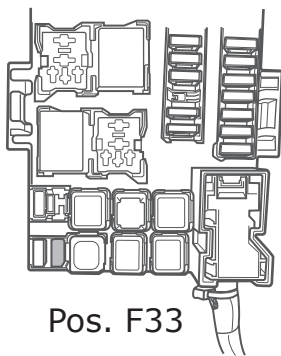


4

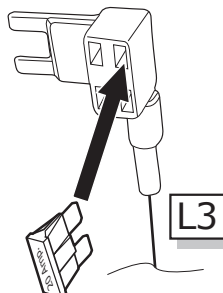


Option 2

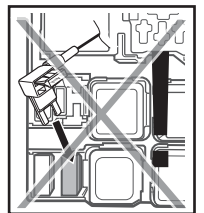
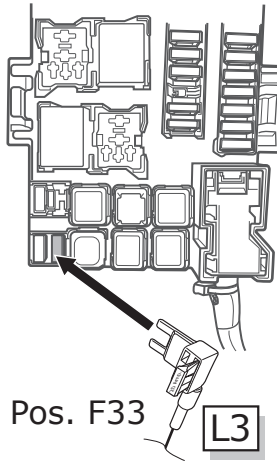
2



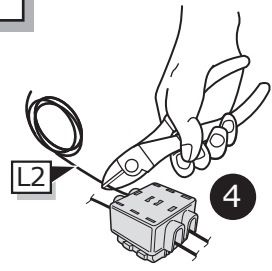
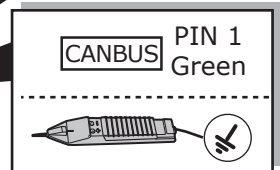
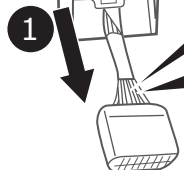
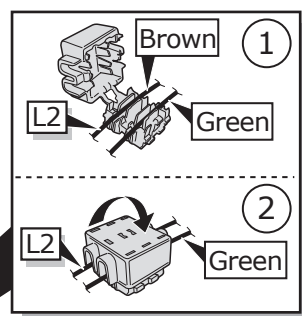
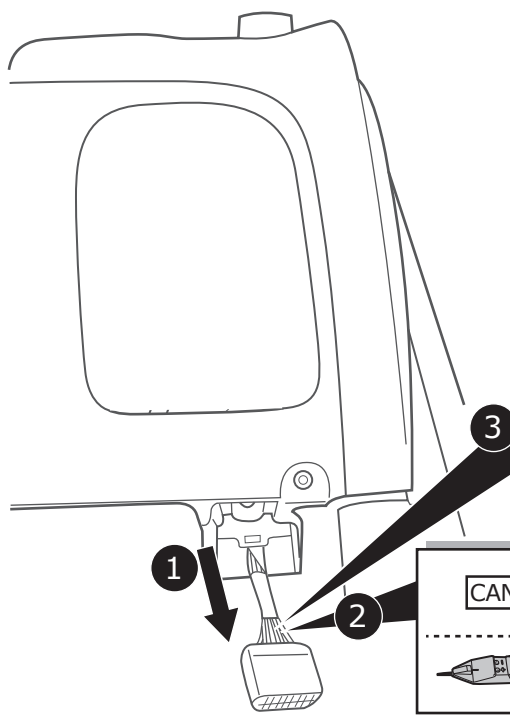
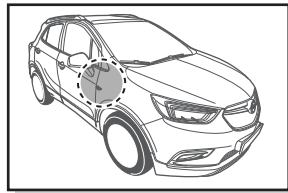
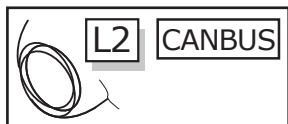
3



4



11

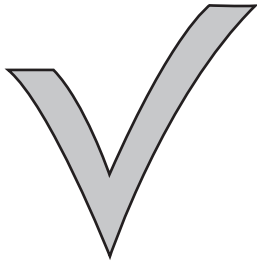
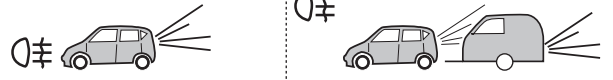
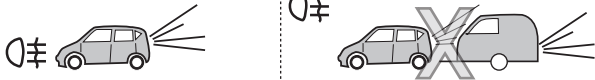


12



# SP-140-ZZ

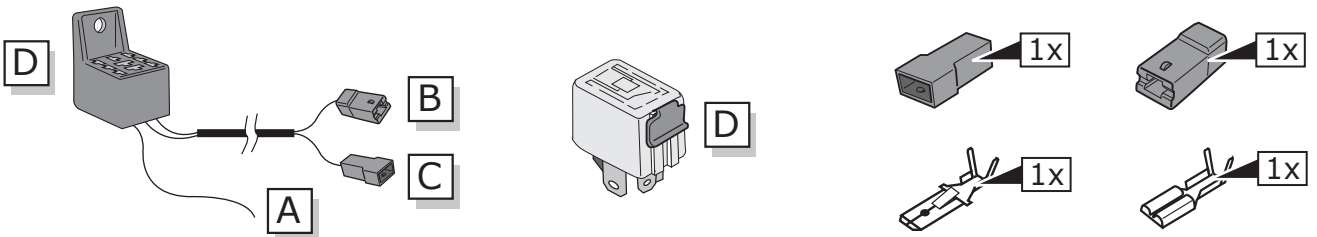
## INFO



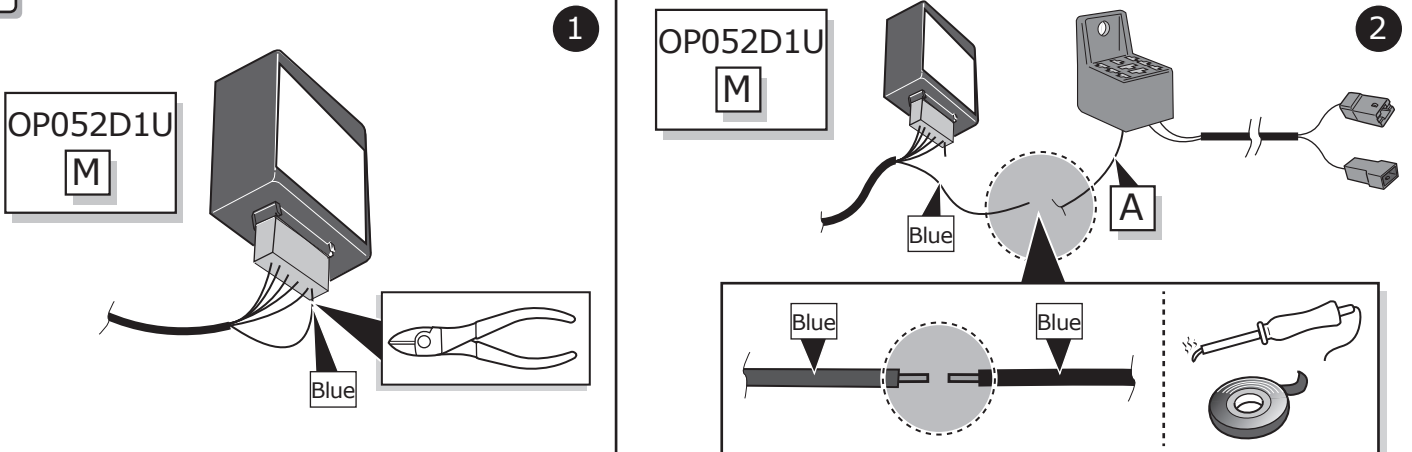
Supplier



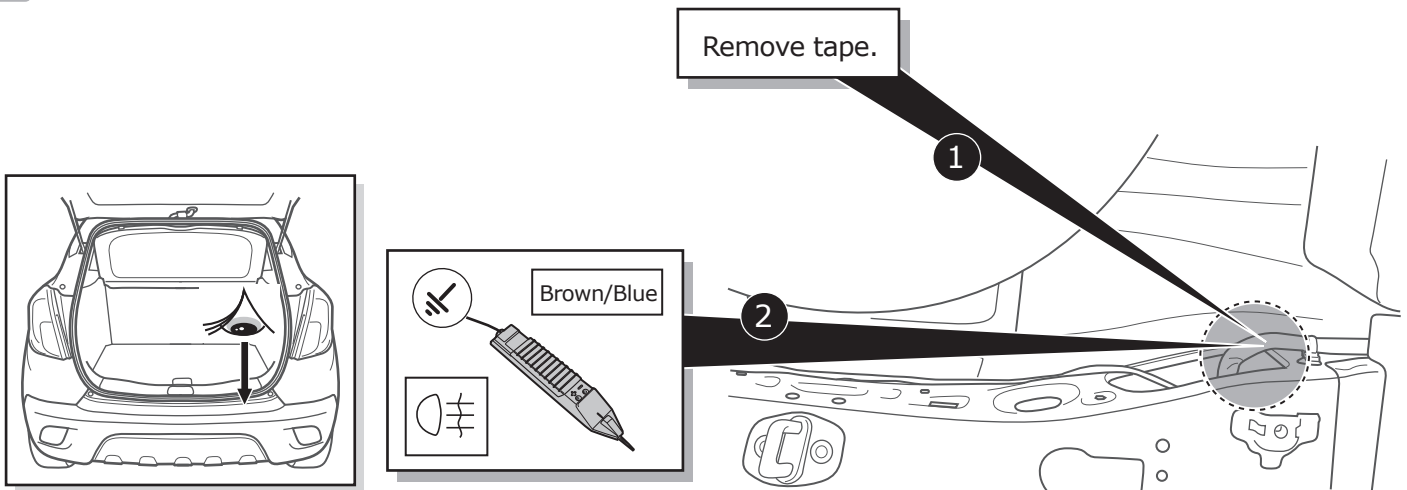
## A



## B

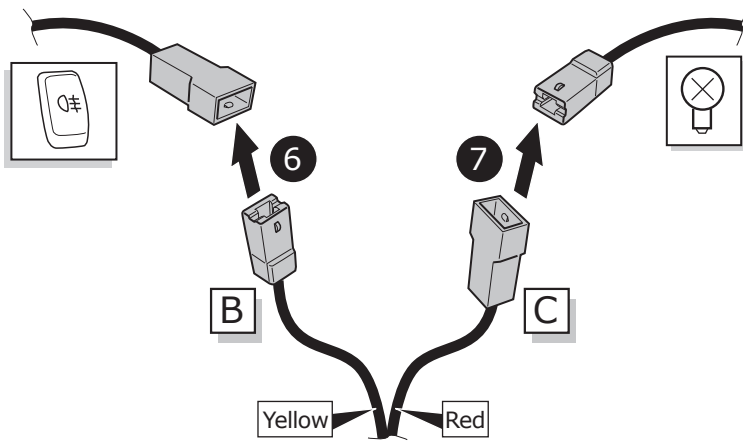
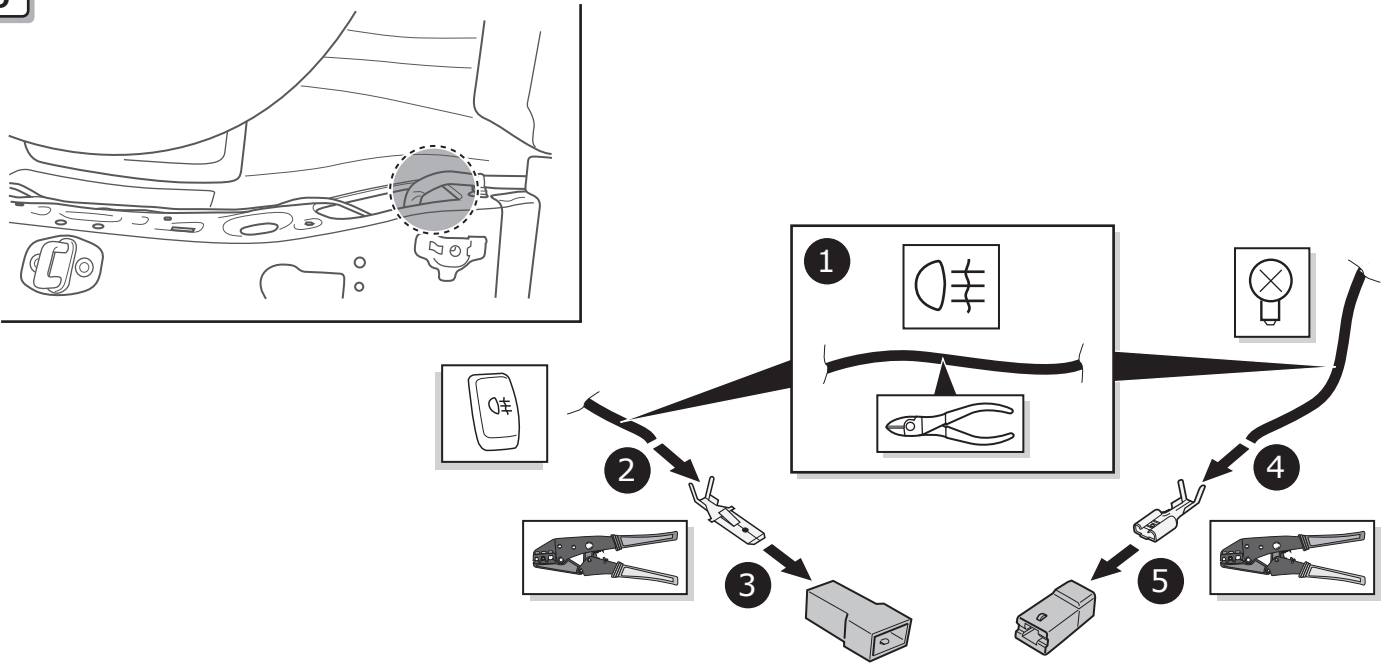


## C

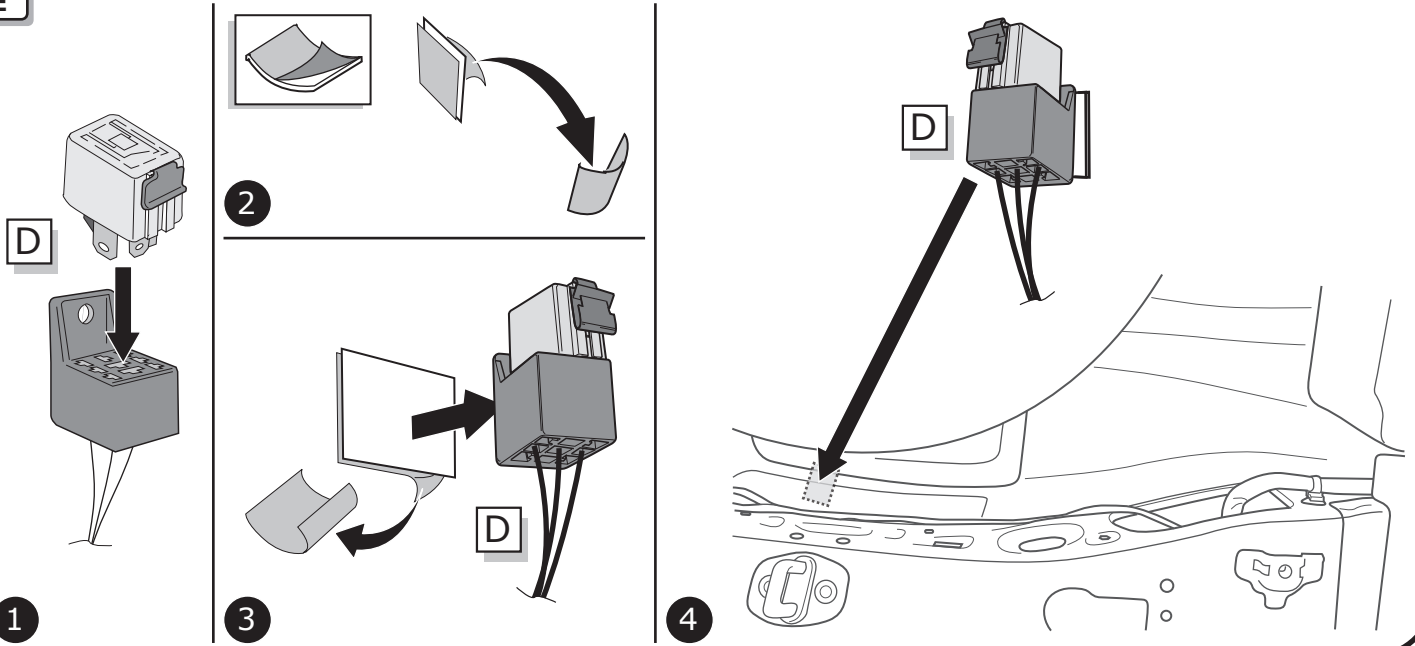




D



E

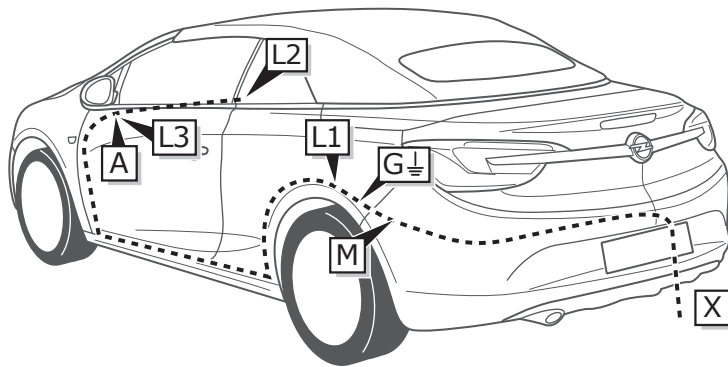


INFO

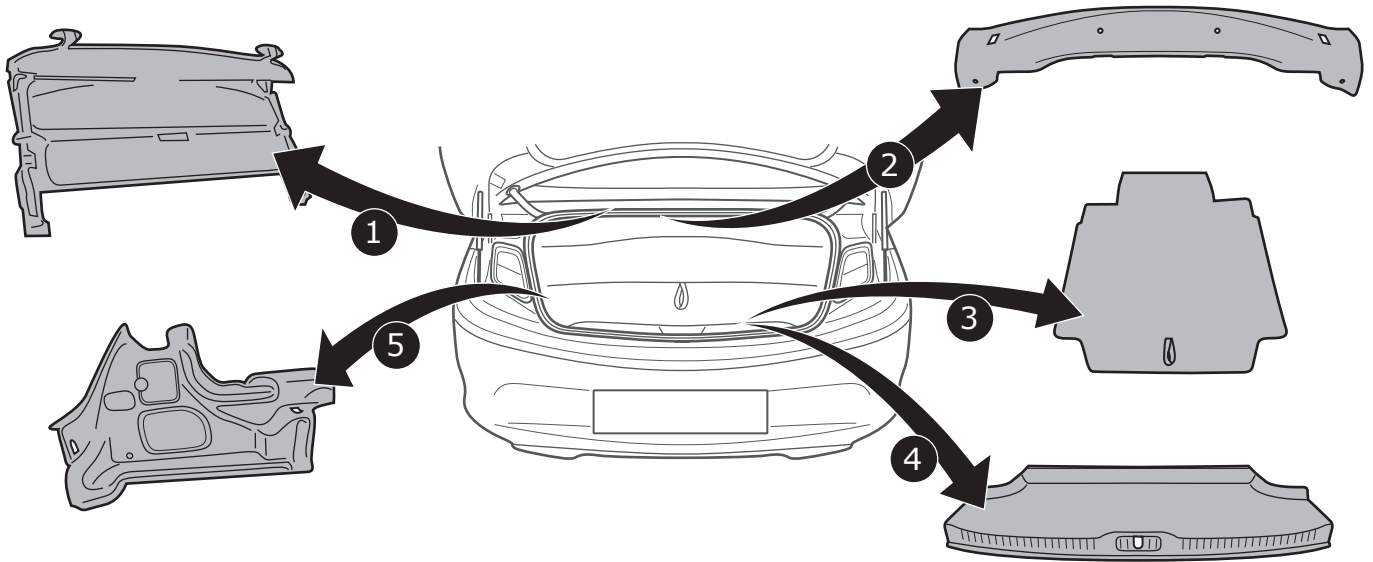
Cascada

Pag. 31

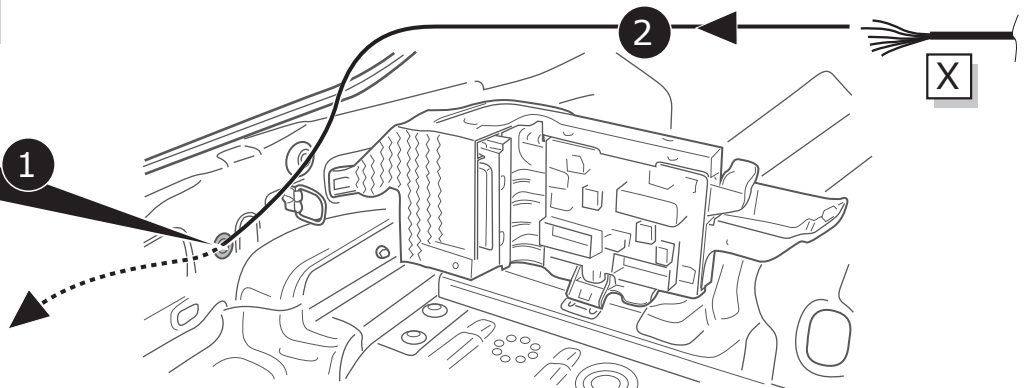
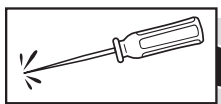
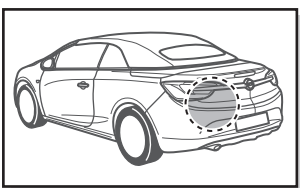
-  
Pag. 34



1



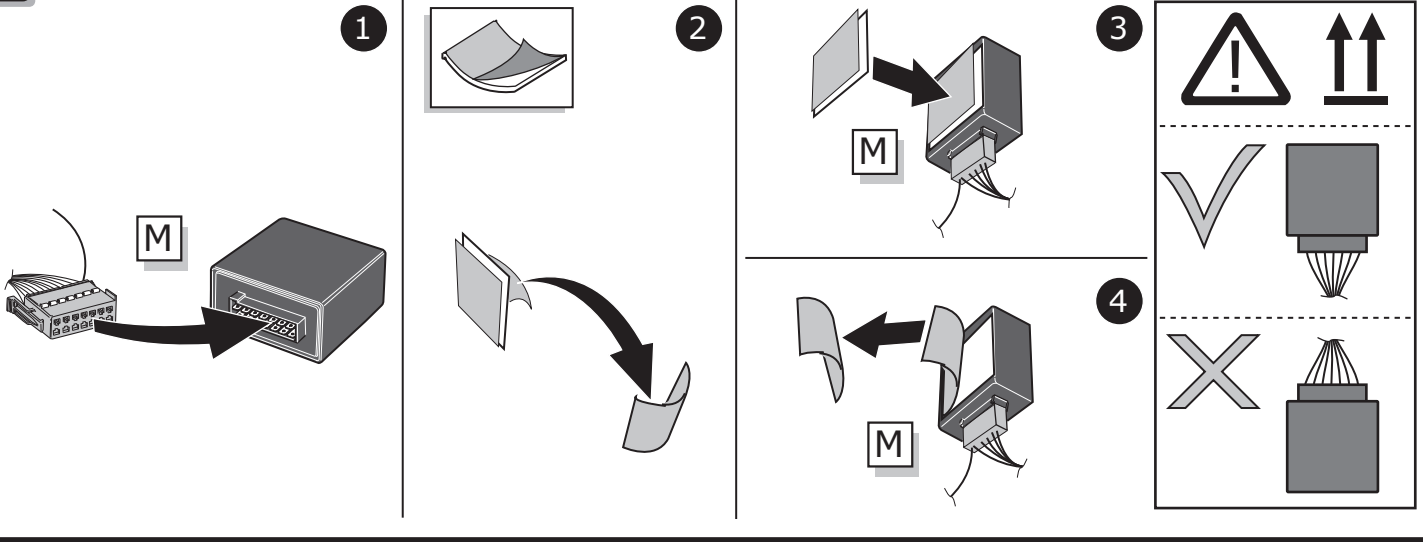
2



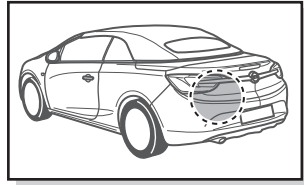
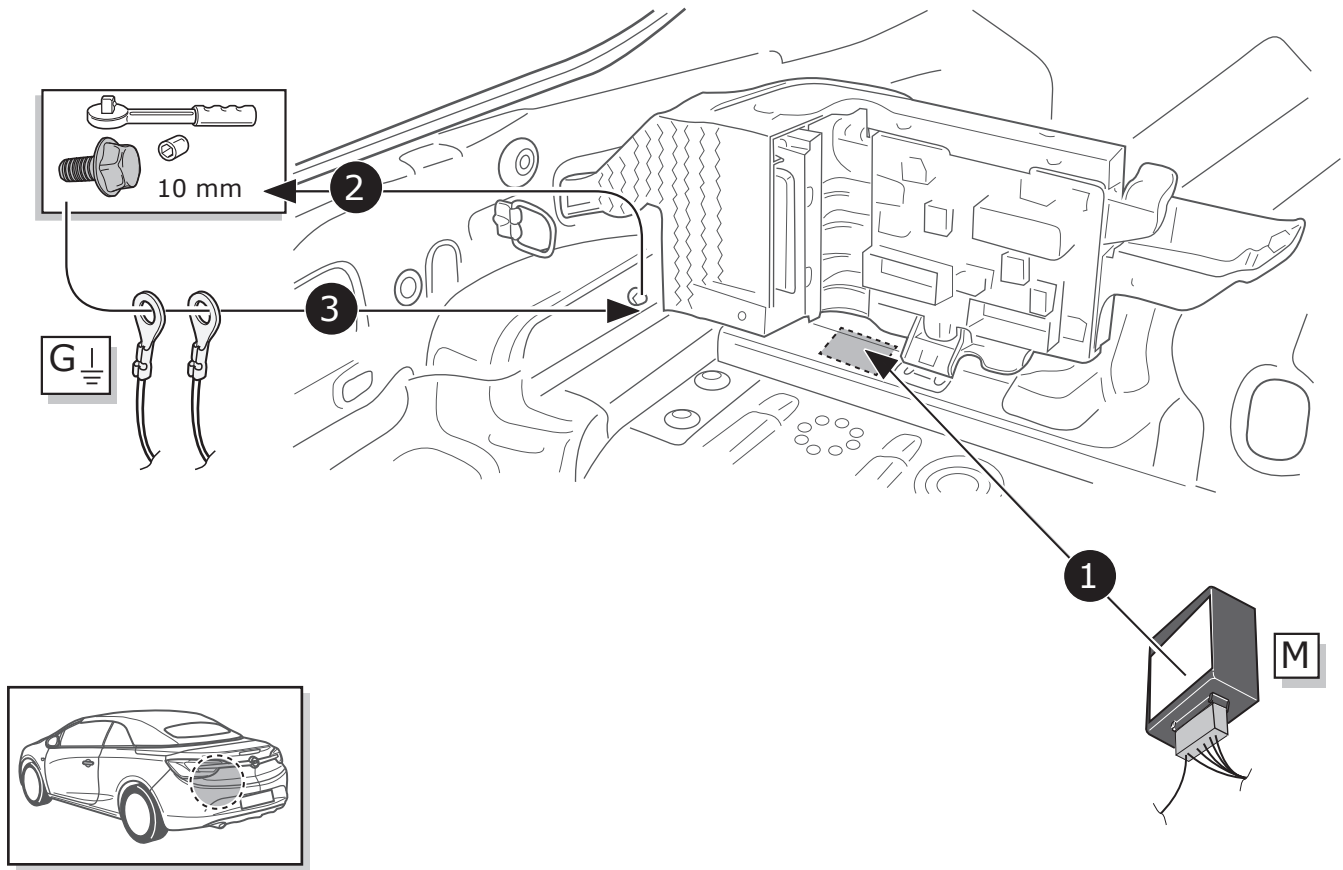
3



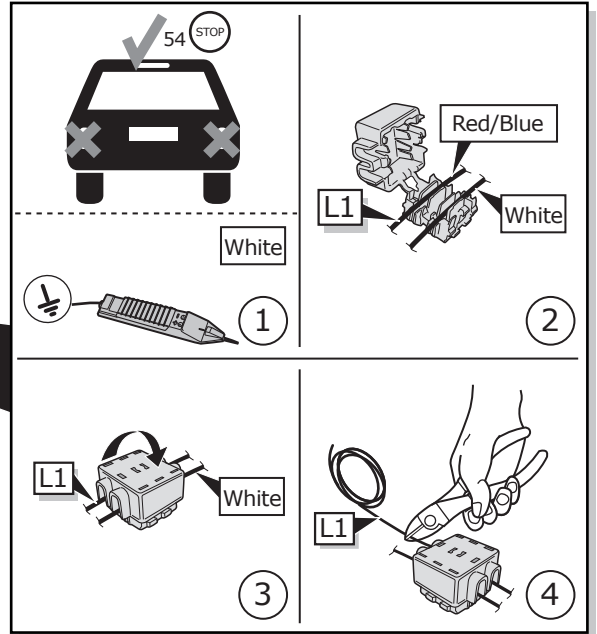
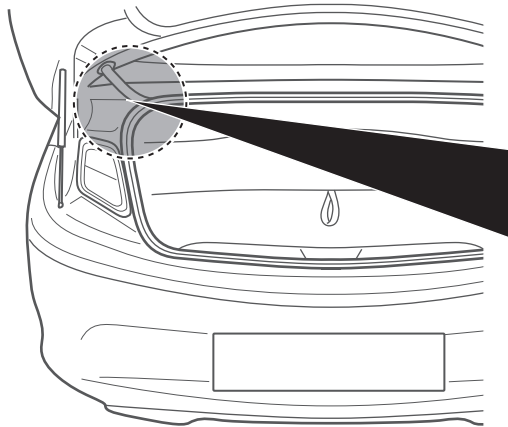
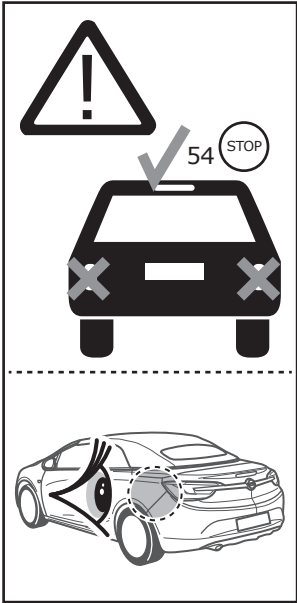
4



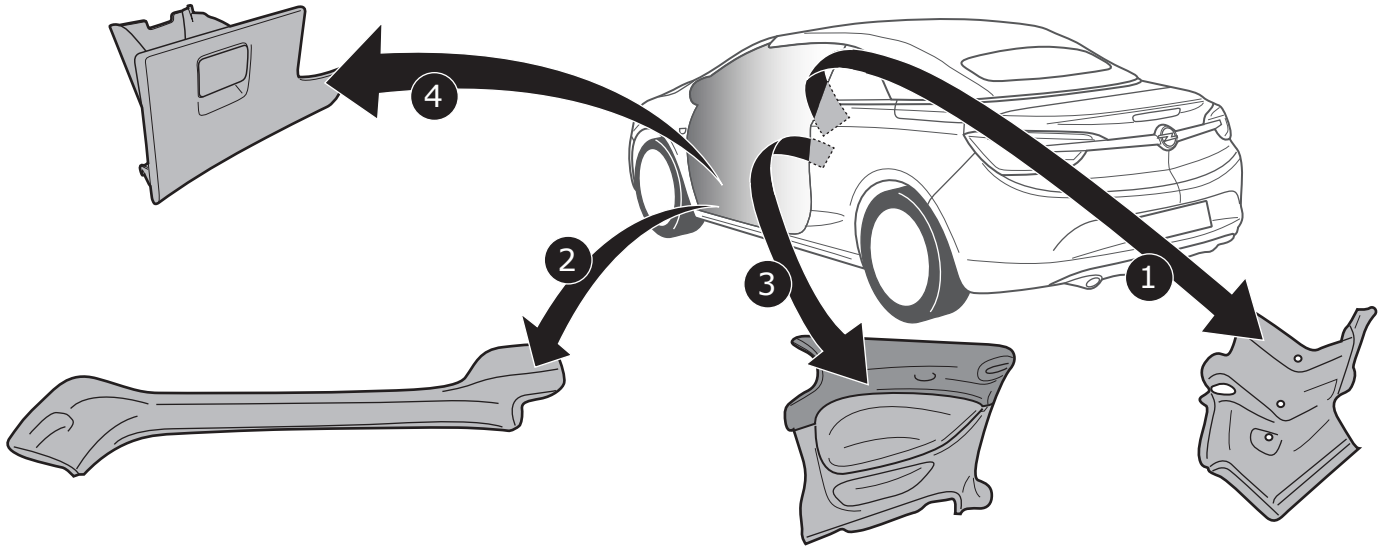
5



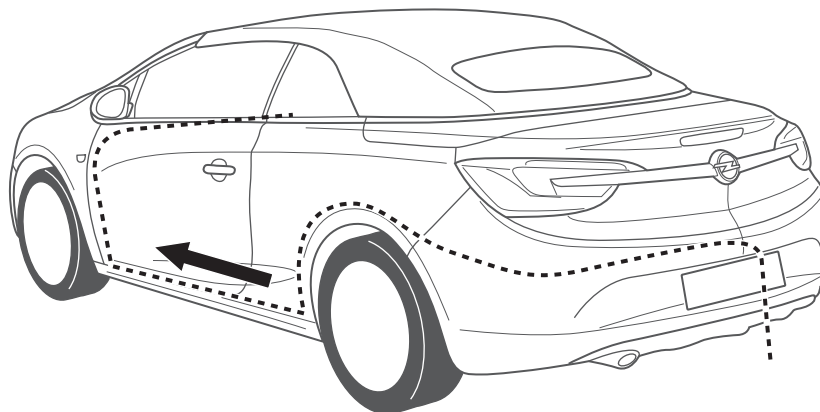
6



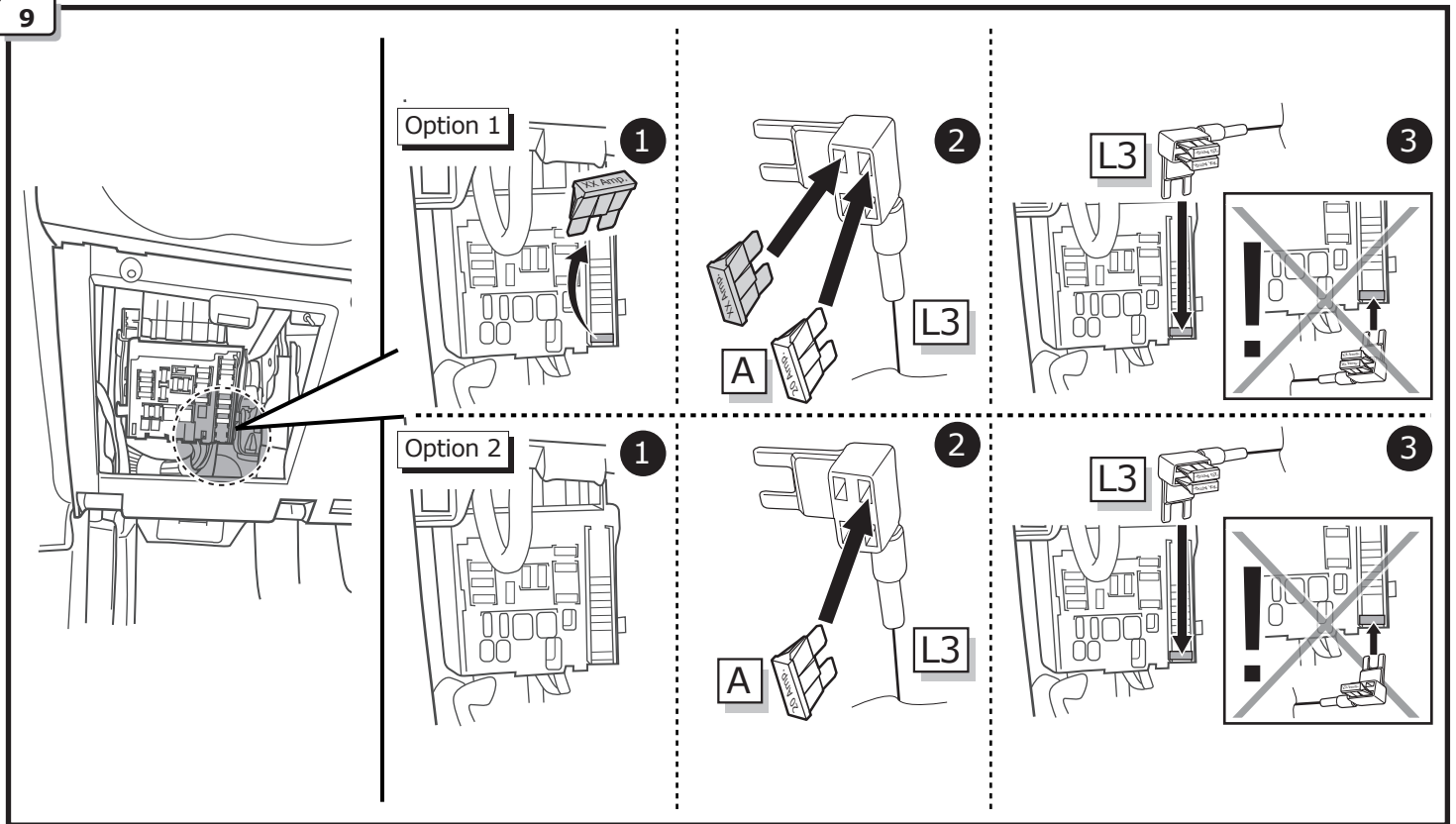
7



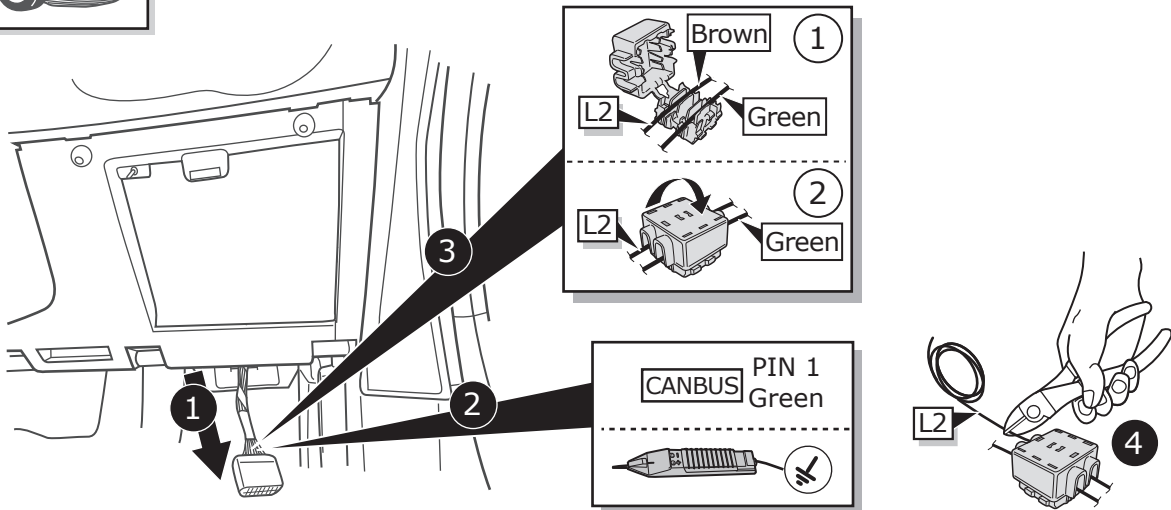
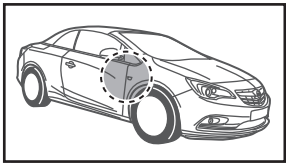
8



9



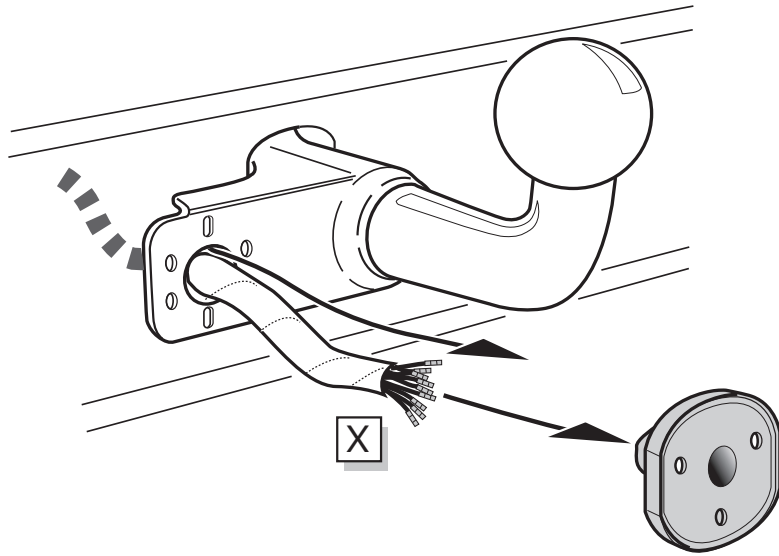
10



11



A

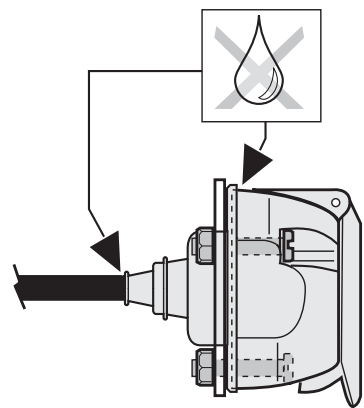
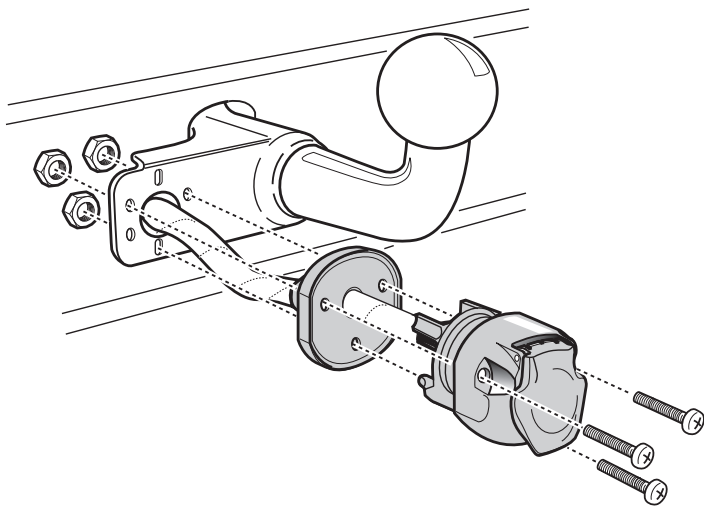


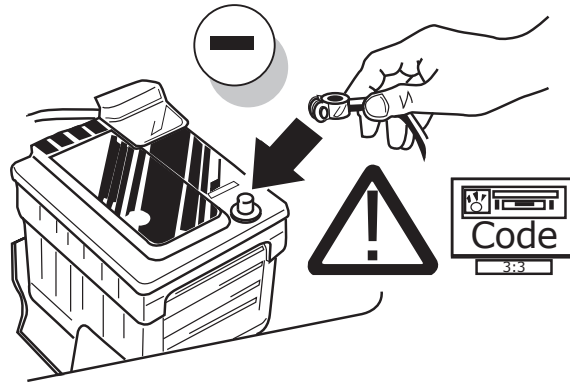
INFO

SOCKET CONNECTION 

Pag. 37

B



**A****B**

Mokka

**INFO**

Pag. 29 - Pag. 30

**C**

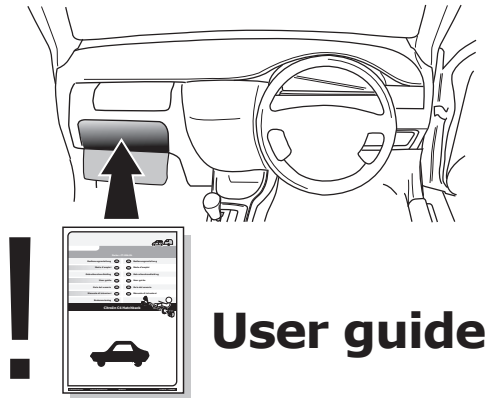
TEST ALL THE CIRCUITS WITH A TEST DEVICE WITH THE CORRECT POWER LOAD FOR EACH FUNCTION. A TEST DEVICE WITH LED'S CANNOT BE USED FOR THIS PURPOSE.



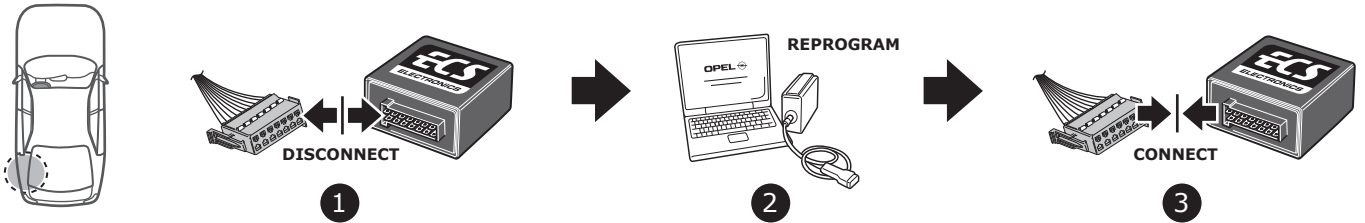
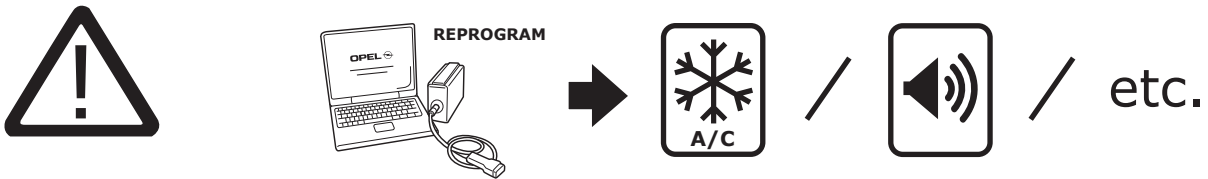
**INFO**

REINSTALL TRIM.

**D**



**INFO**



**INFO**

SOCKET CONNECTION

DIN/ISO 11446													
	1/L	2	3/31	4/R	5/58-R	6/54	7/58-L	8	9	10	11	12	13
Pmax	21W	21W		21W	42W	3x21W	42W	21W	180W/15Amp	180W/15Amp			
Colour	Yellow	Blue	White	Green	Brown	Red 1,00 mm <sup>2</sup>	Black	Black/ Red	Brown/ White	Red 2,50 mm <sup>2</sup>	White	-	White