



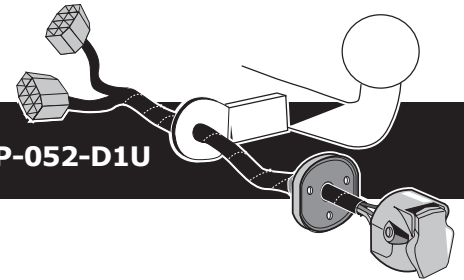
OPEL

Insignia Sedan F69 11/2008-
Insignia Hatchback F68 11/2008-
Insignia Sports Tourer F35 11/2008-

CHEVROLET

Aveo HB MY 2012-
Aveo SDN MY 2012-
Cruze HB MY 2012-
Cruze NB MY 2010-

Partnr.: OP-052-D1U



- Fitting instructions electric wiring kit tow bar with 13-P socket up to DIN/ISO Norm 11446.
- We would expressly point out that assembly not carried out properly by a competent installer will result in cancellation of any right to damage compensation, in particular those arising by virtue of the product liability act.
- Contents of these kits and their fitting manuals are subject to alteration without notice, please ensure that these instructions are read and fully understood before commencing installation.
- Do not overload circuits; the maximum loads per connection are detailed in this manual.
- Attention! Before Installation, please read this manual carefully and inform your customer to consult the vehicle owners manual to check for any vehicle modifications required before towing.
- In the event of functional problems, troubleshooting must be limited to about 0.5 hours, contact the installers support: customercare@ecs-electronics.com / 00800 22 55 23 27.

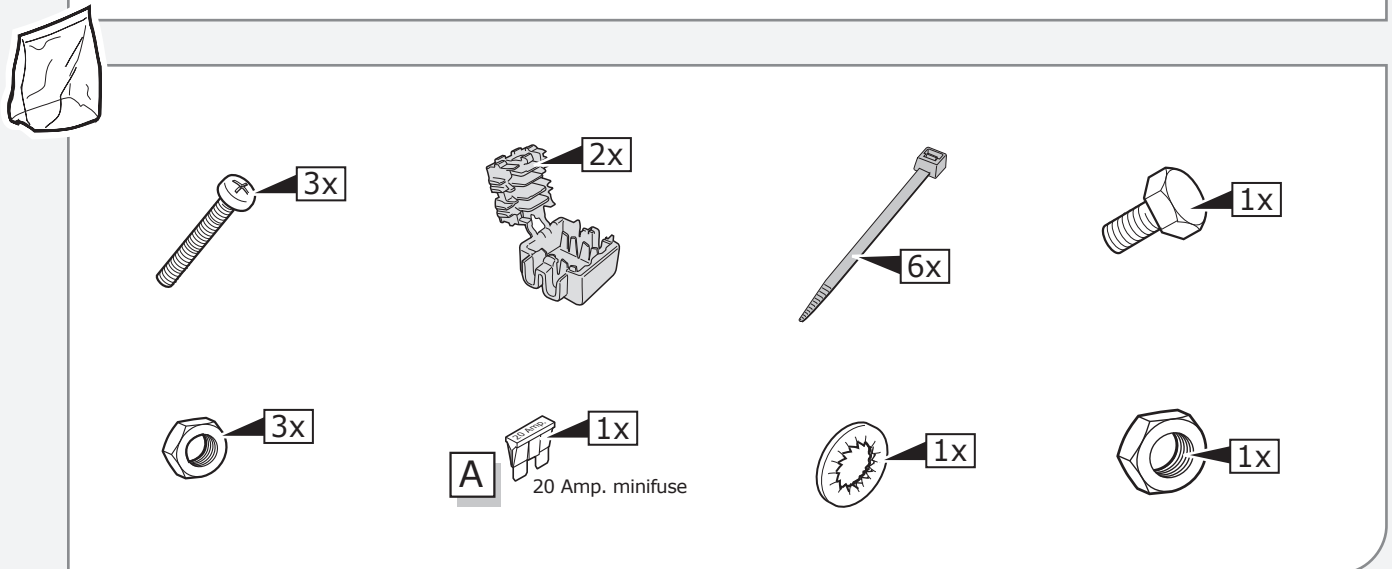
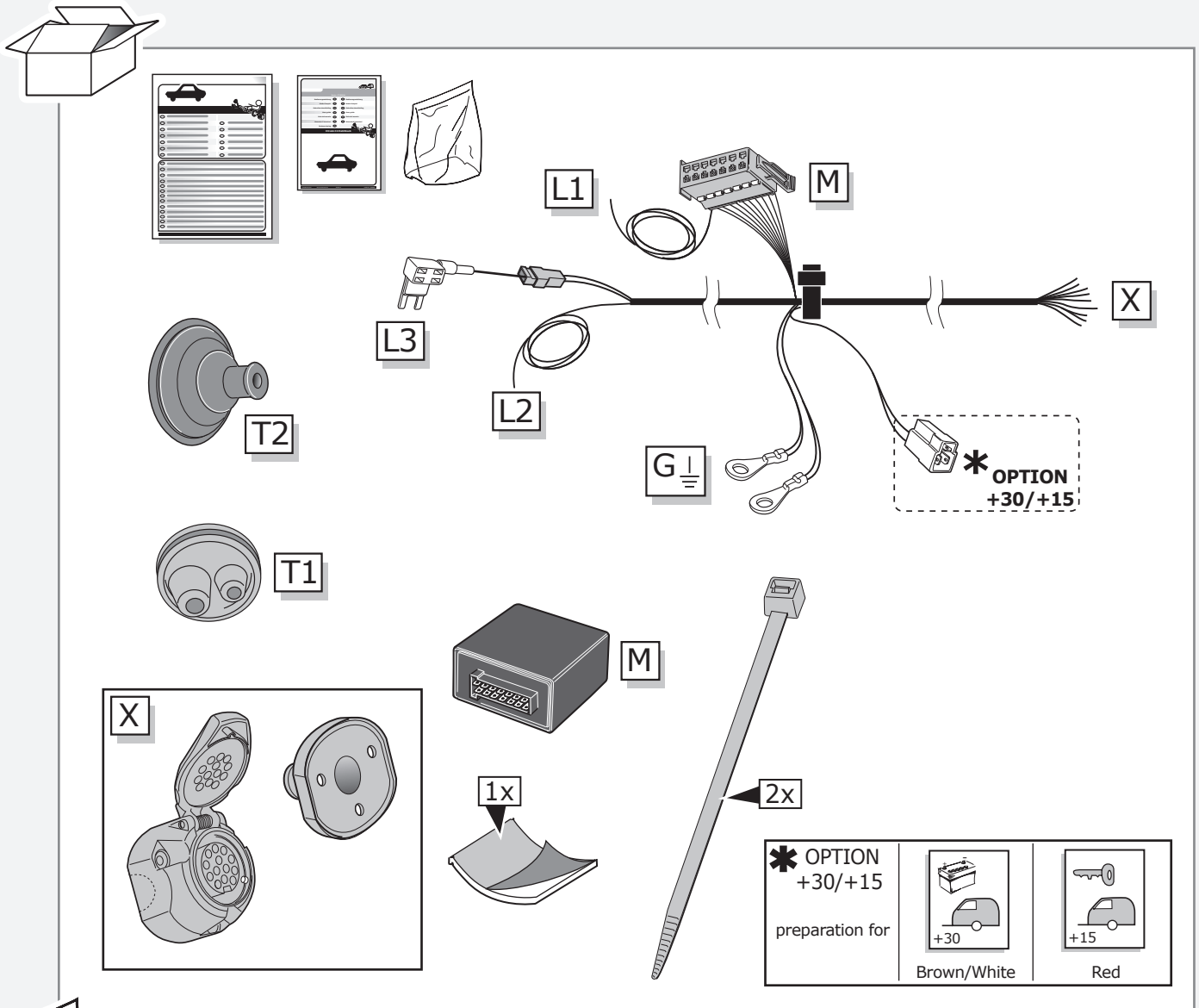


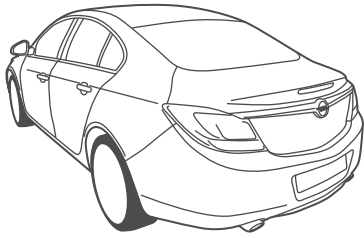
00800
22 55 23 27
CALL2ECS

Monday - Friday
08.00am - 11.00am
12.00am - 05.00pm GMT

customercare@ecs-electronics.com
www.ecs-electronicsuk.co.uk

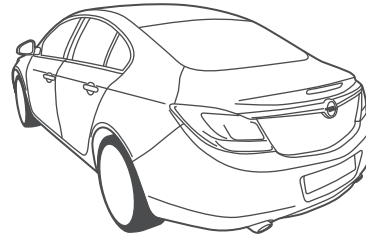
Part list





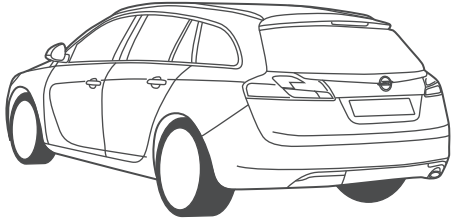
Insignia SD

Pag. 4
-
Pag. 8



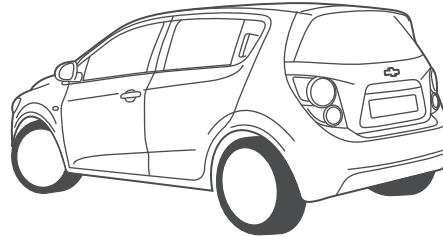
Insignia HB

Pag. 9
-
Pag. 12



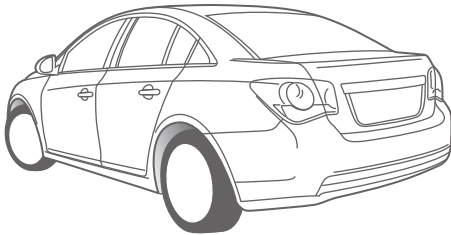
Insignia ST

Pag. 13
-
Pag. 17



Aveo HB

Pag. 18
-
Pag. 20



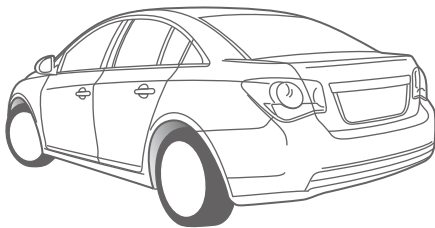
Aveo SD

Pag. 21
-
Pag. 23



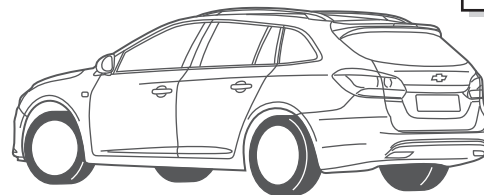
Cruze HB

Pag. 24
-
Pag. 26



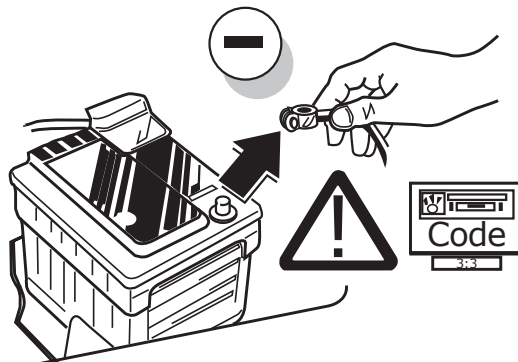
Cruze NB

Pag. 27
-
Pag. 30

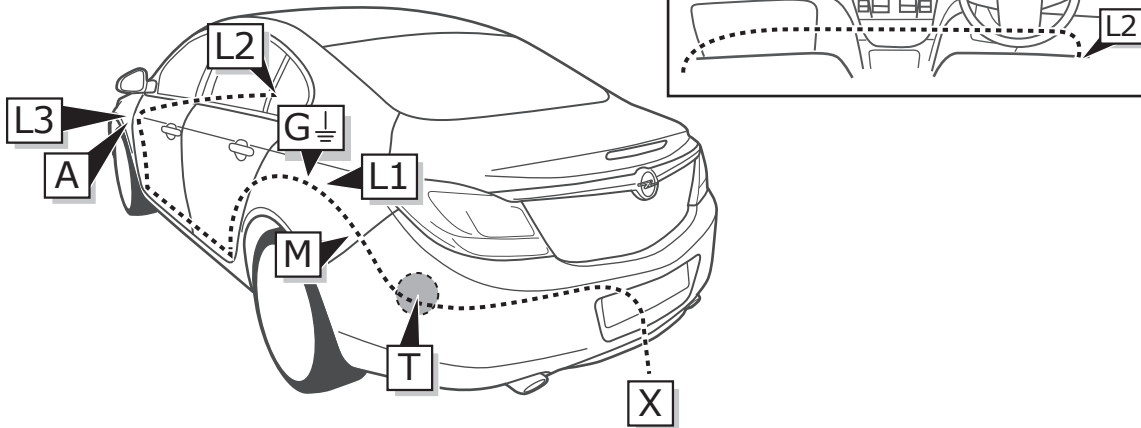


Cruze SW

Pag. 31
-
Pag. 33



INFO



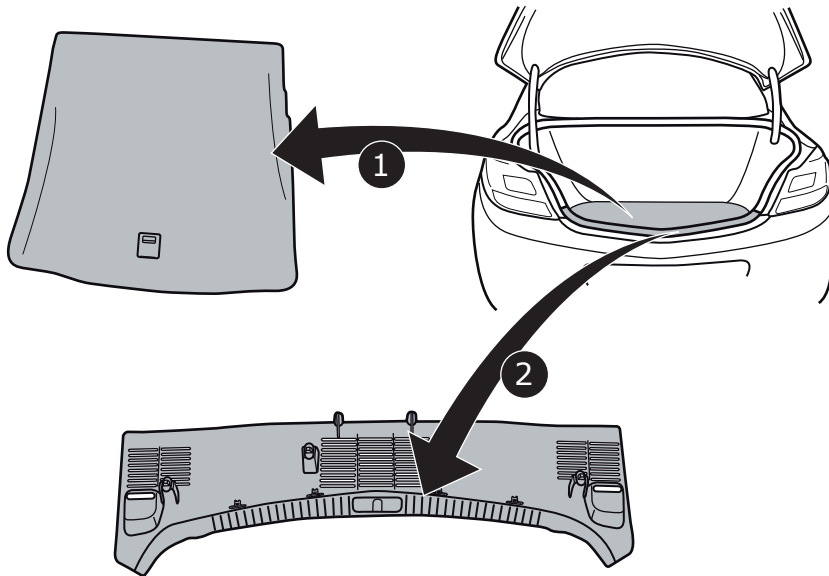
Insignia SD

Pag. 4

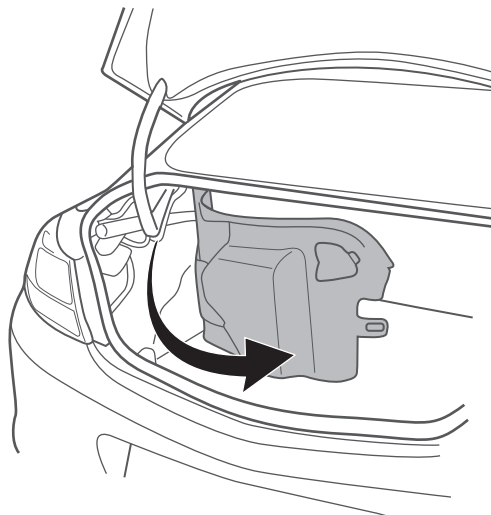
-

Pag. 8

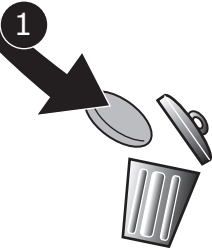
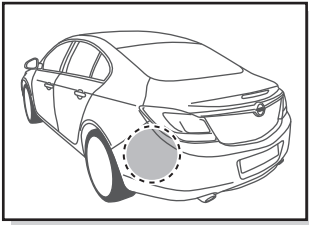
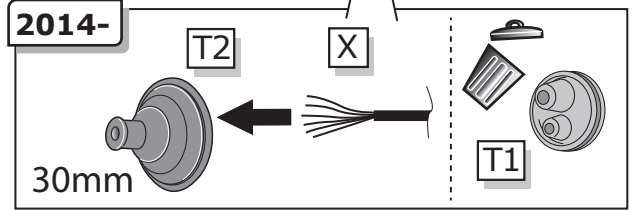
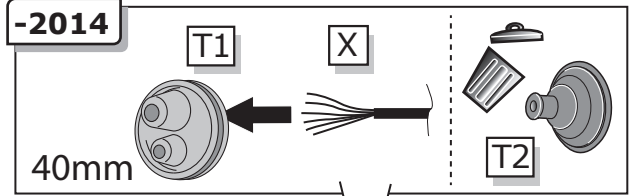
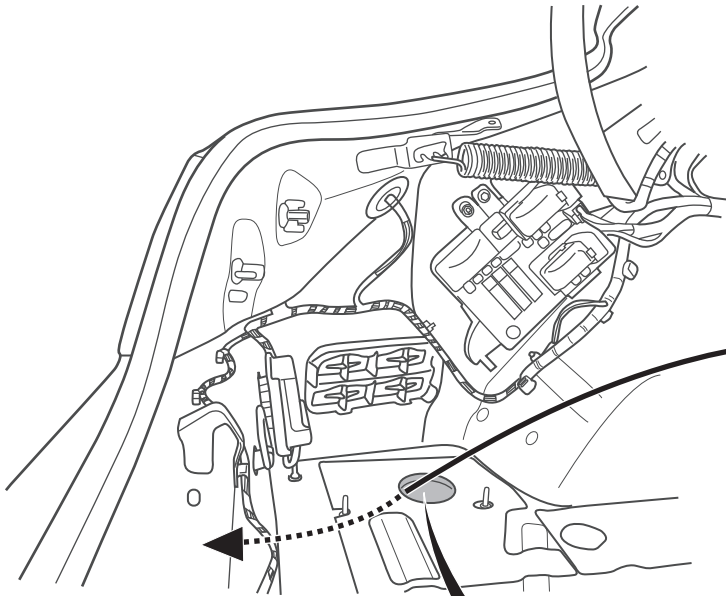
1



2



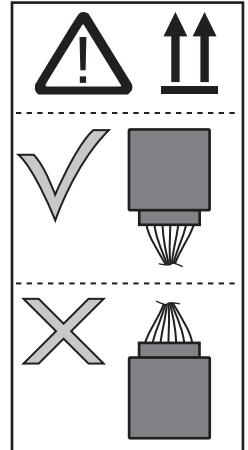
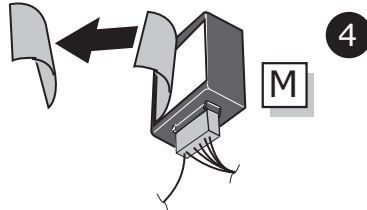
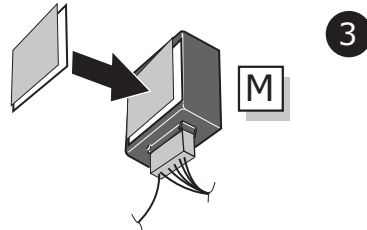
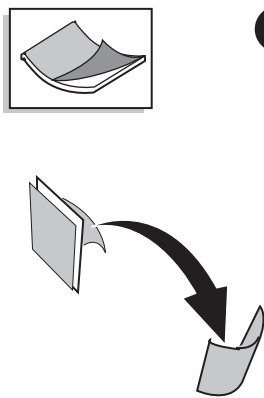
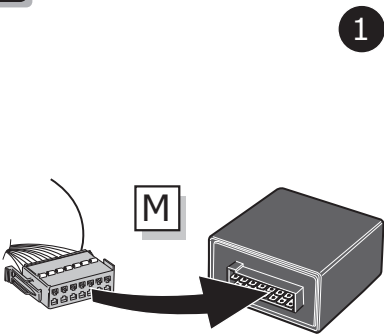
3



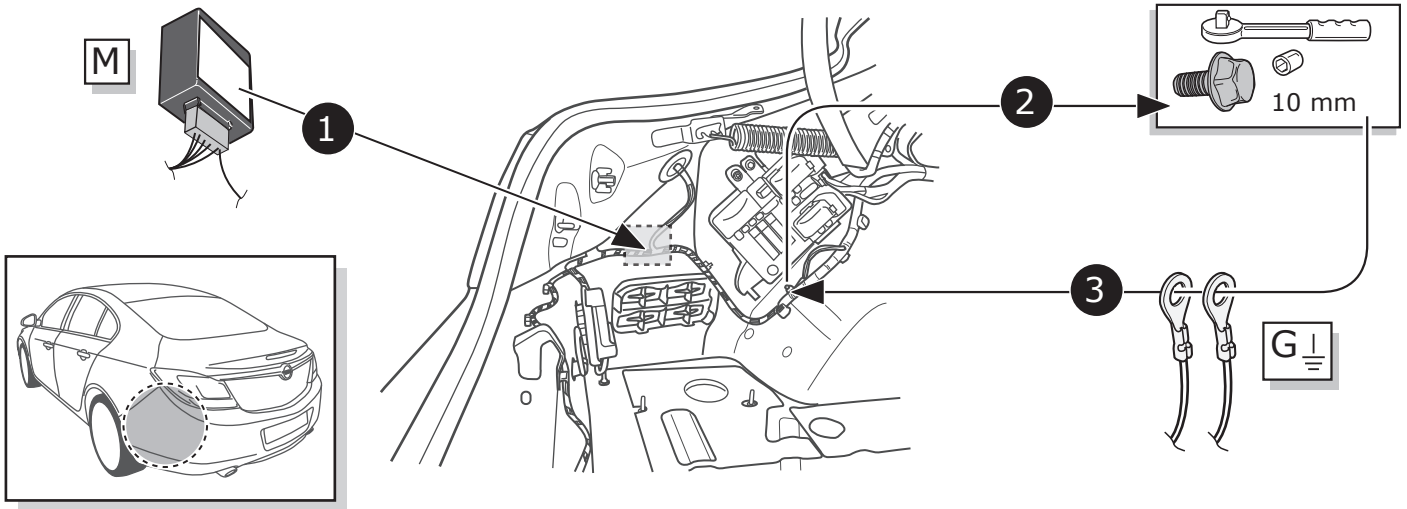
4



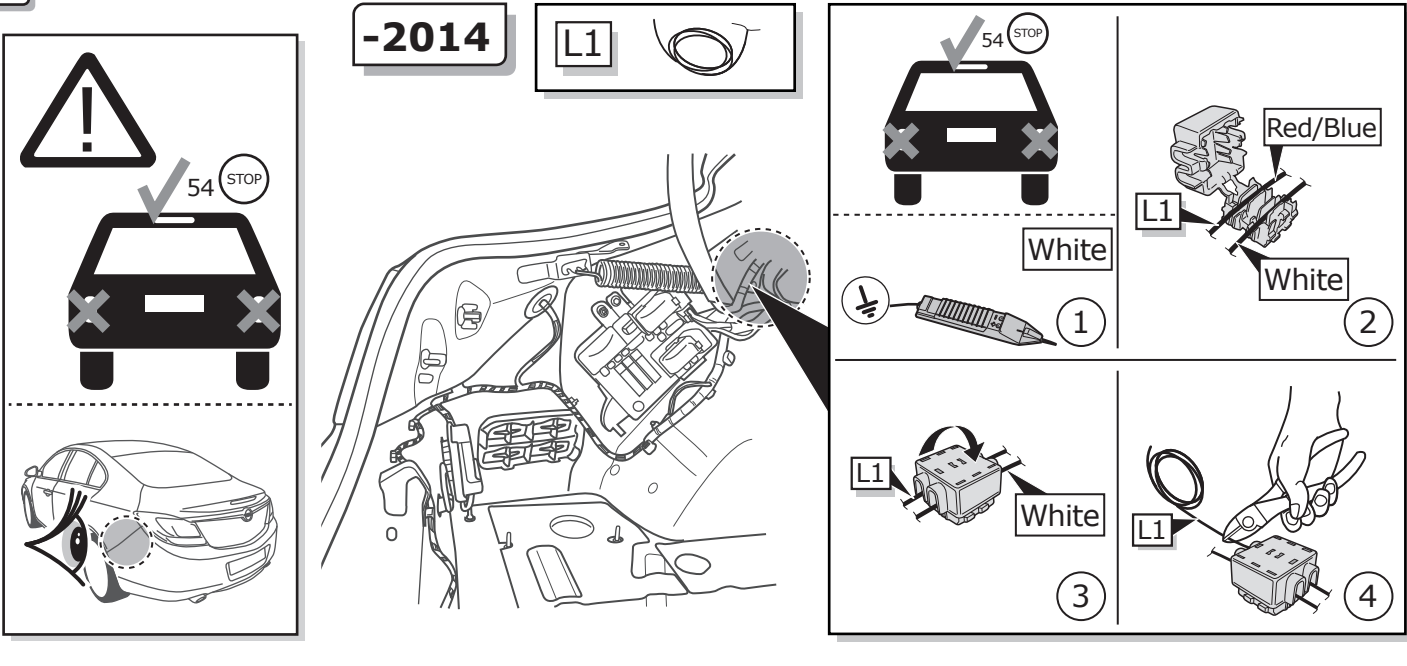
5



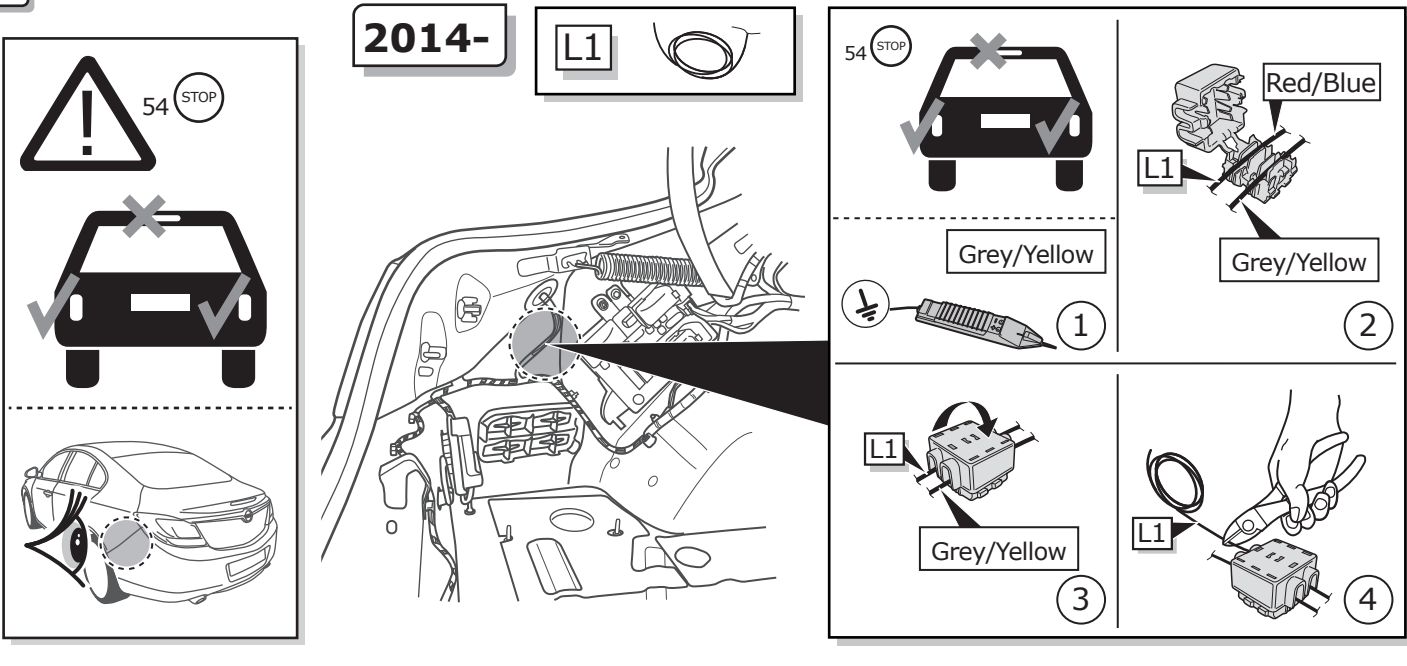
6

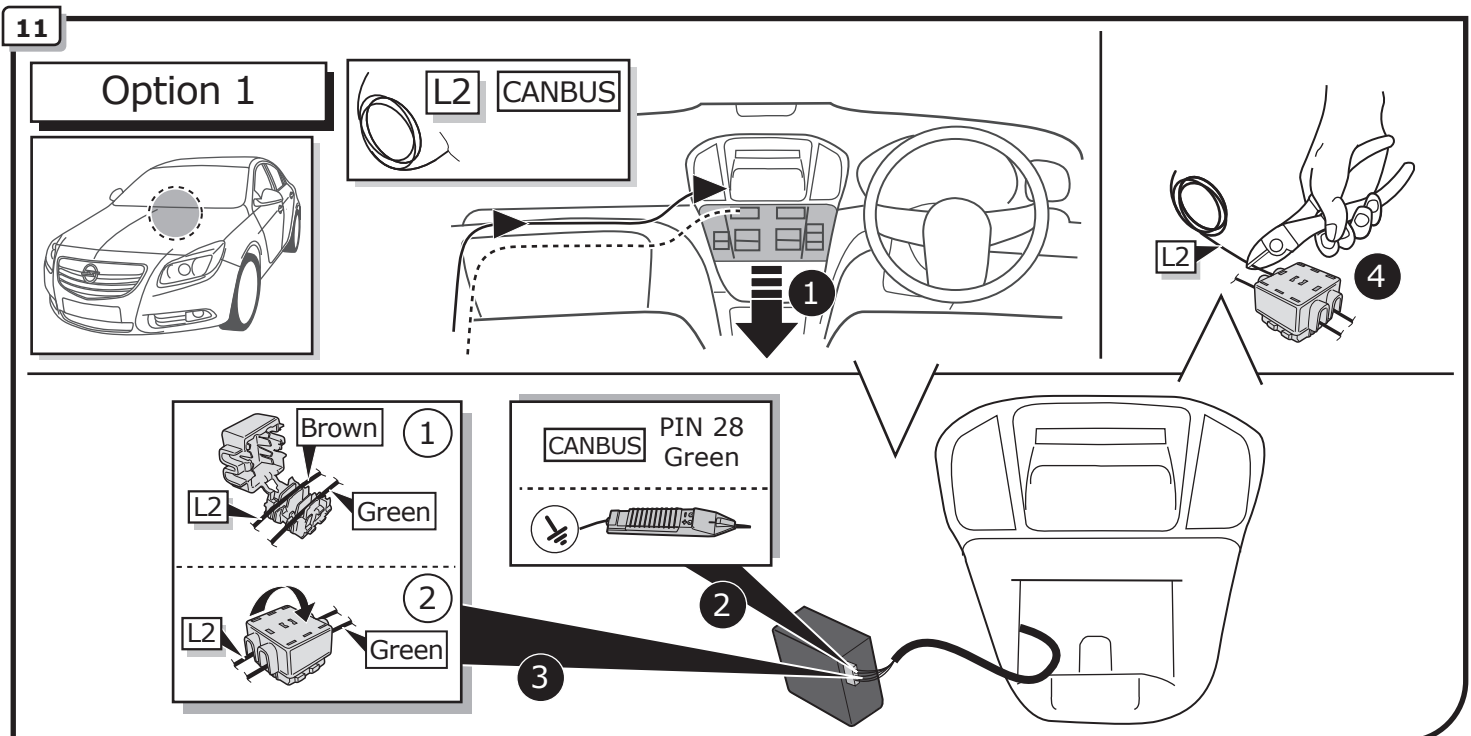
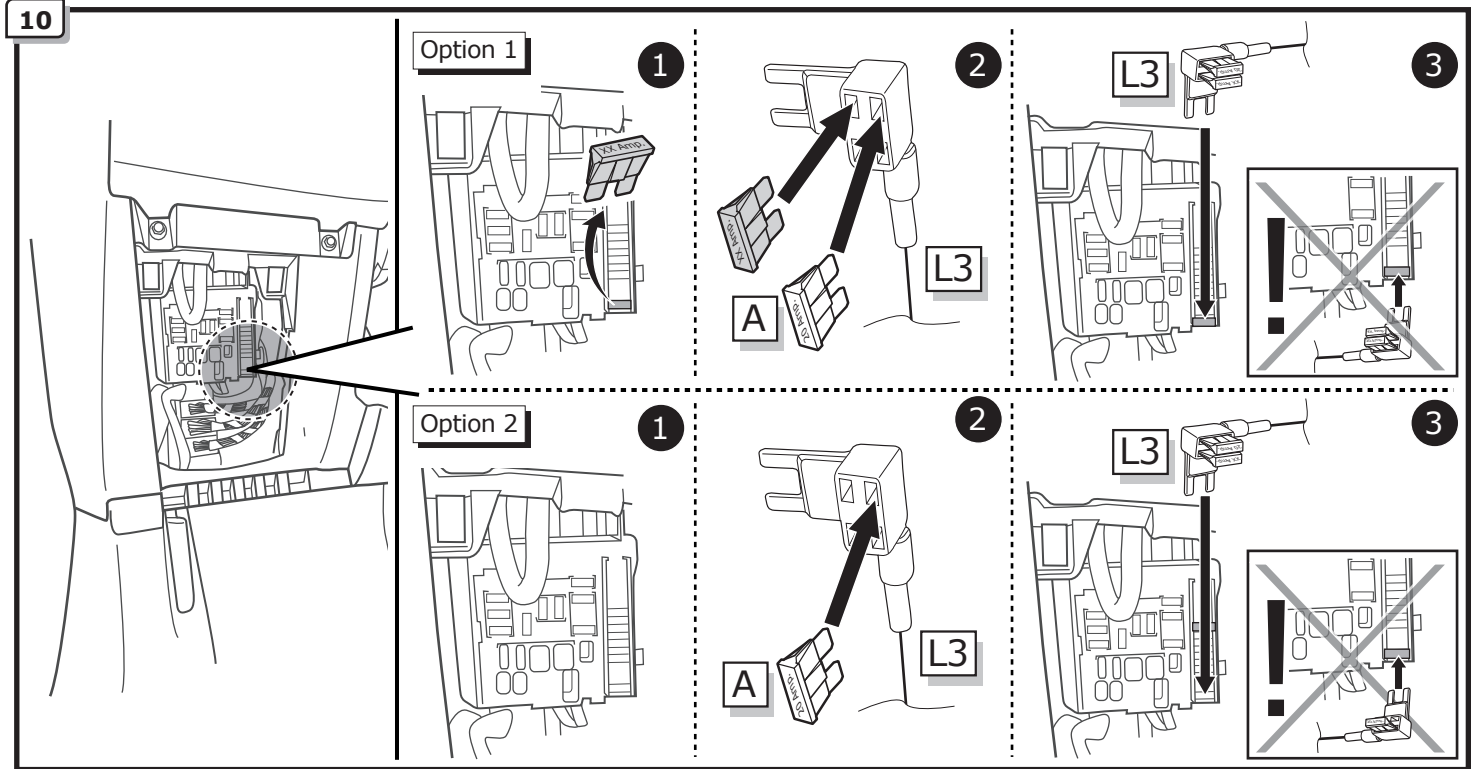
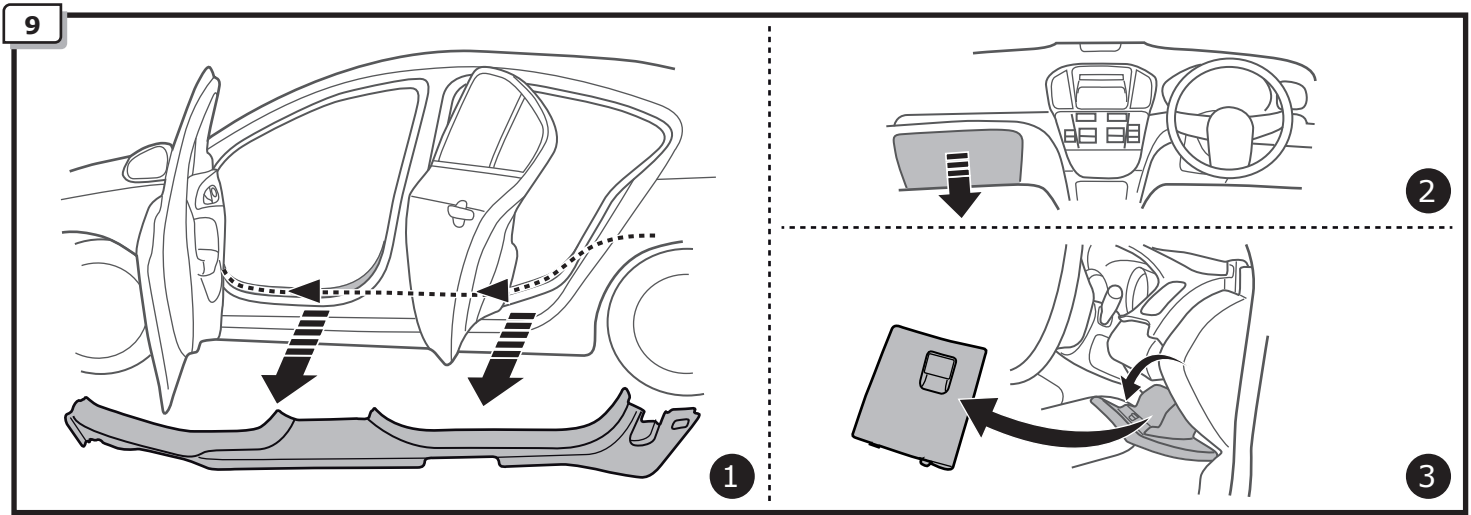


7



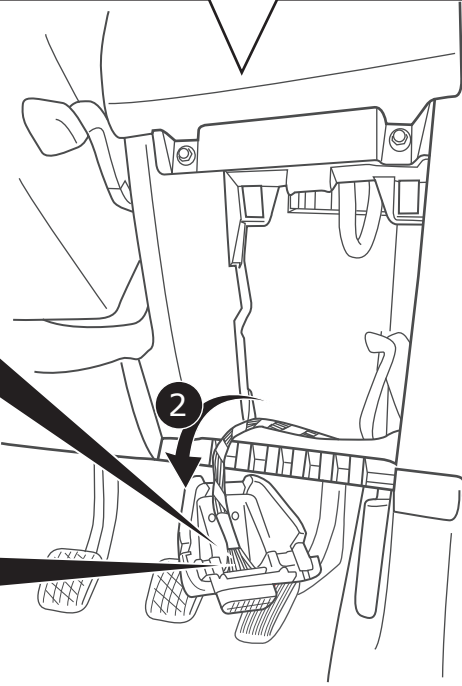
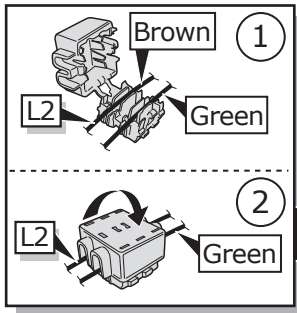
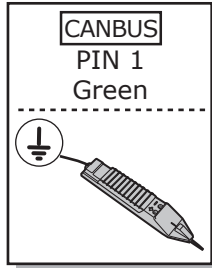
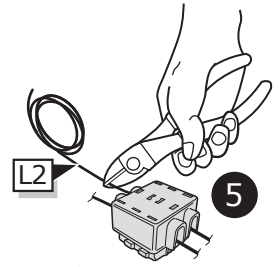
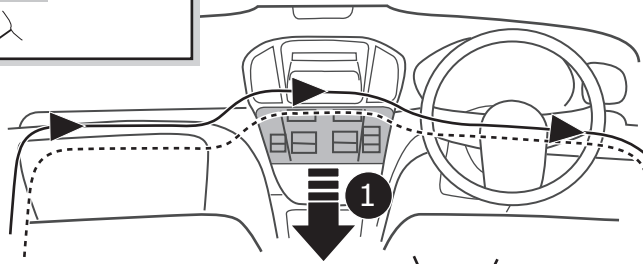
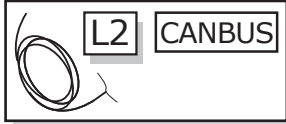
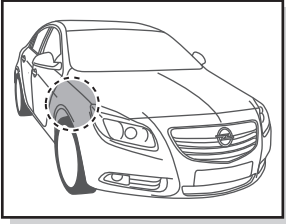
8





12

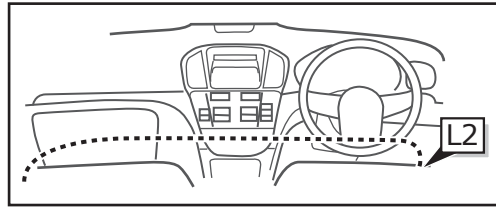
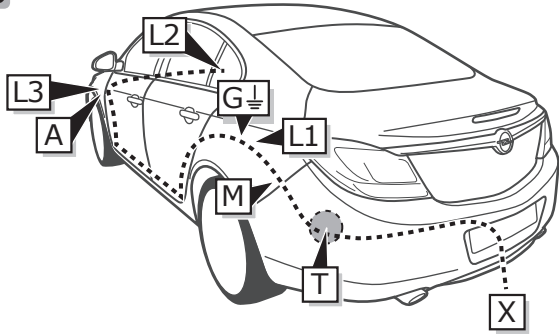
Option 2



13



INFO

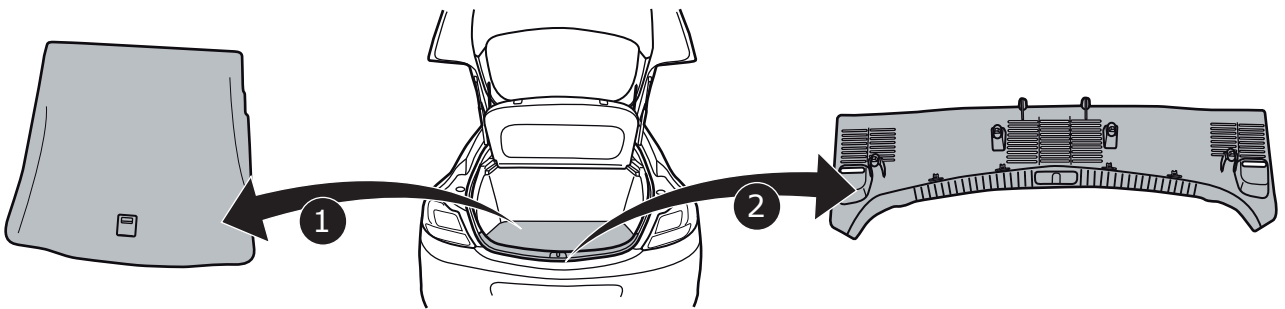


Insignia HB

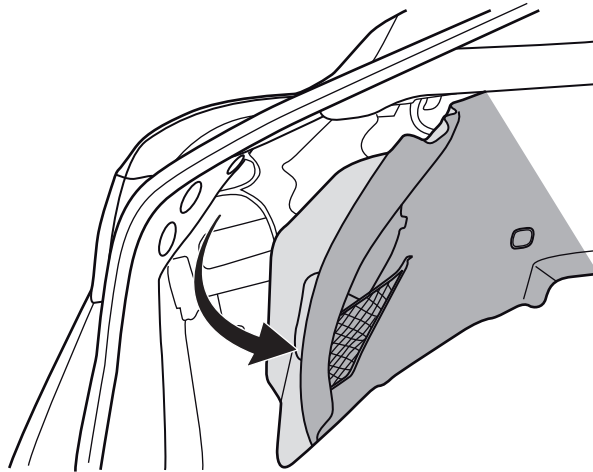
Pag. 9

-
Pag. 12

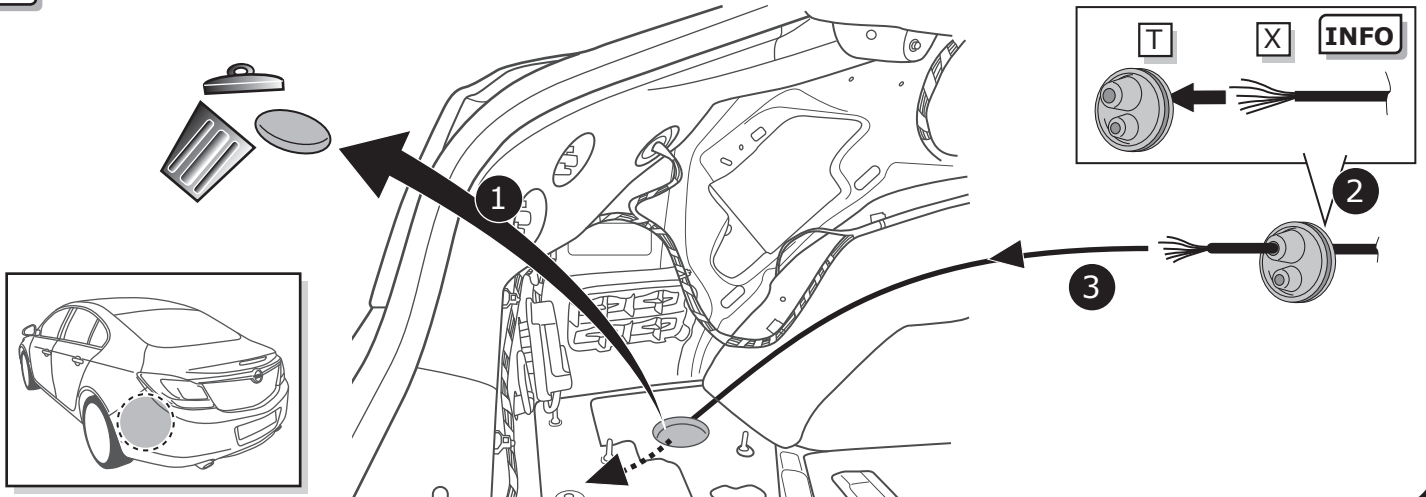
1



2



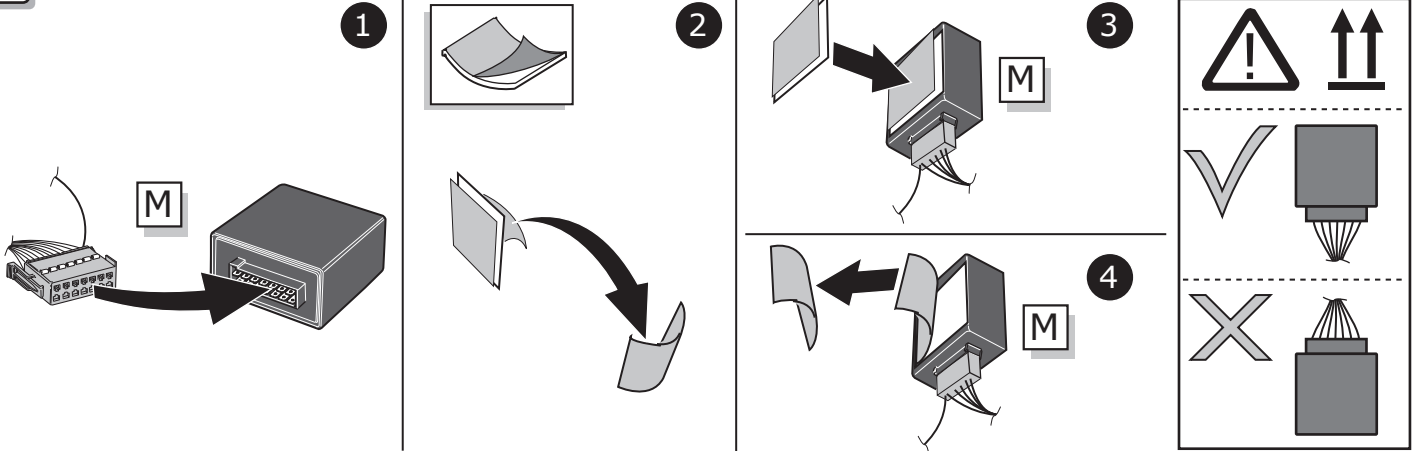
3



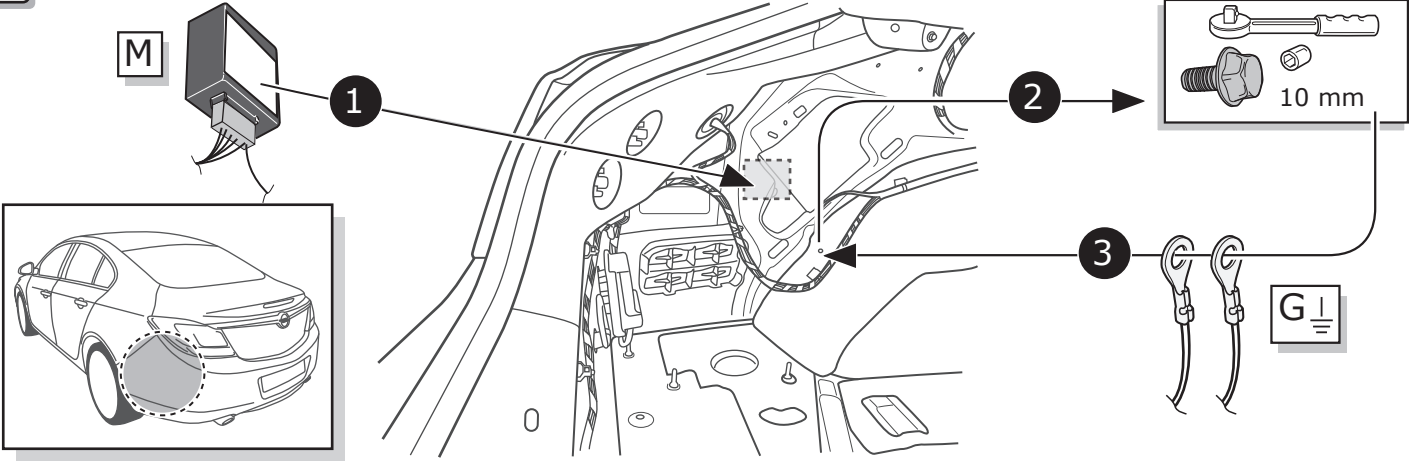
4



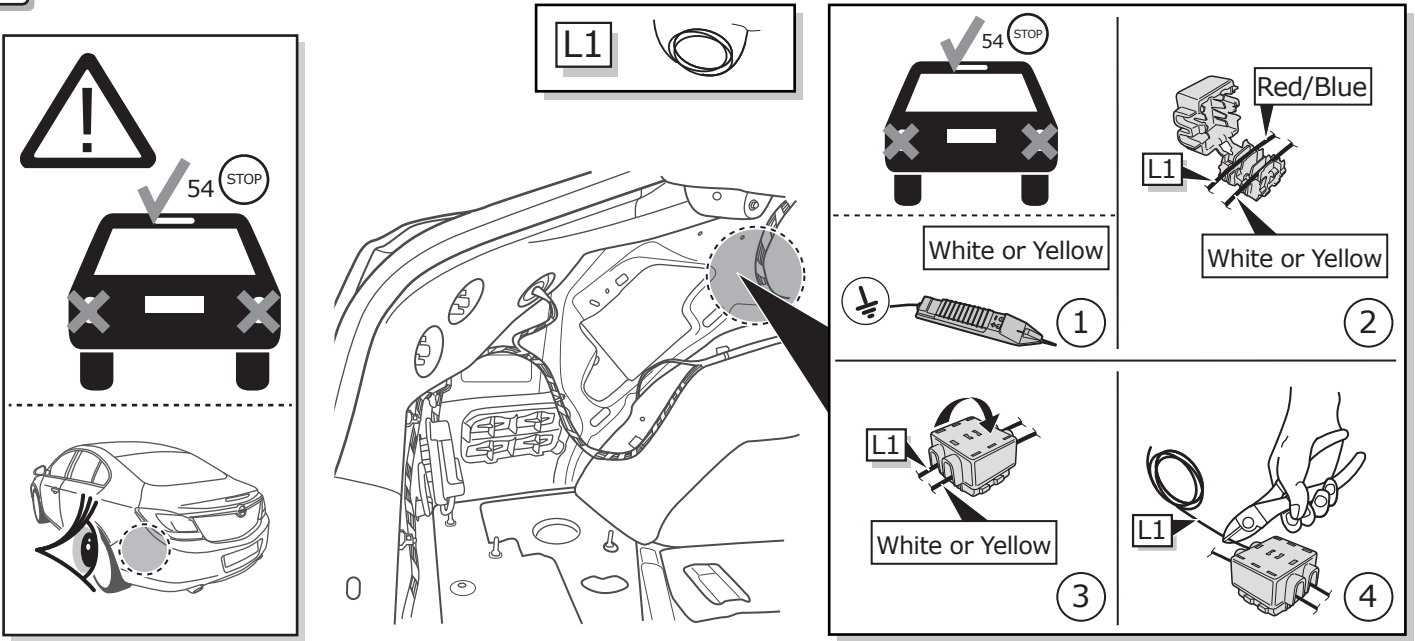
5



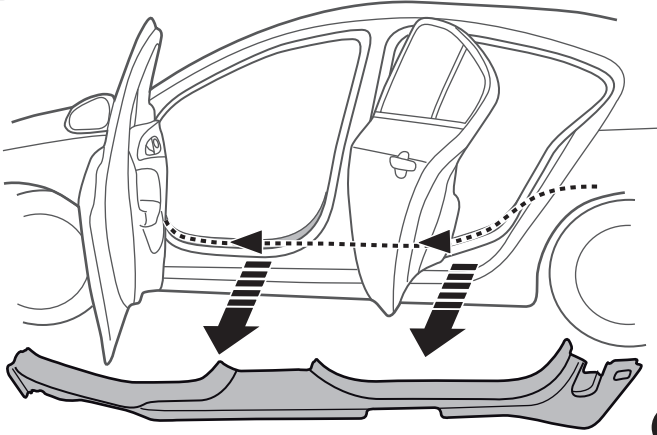
6



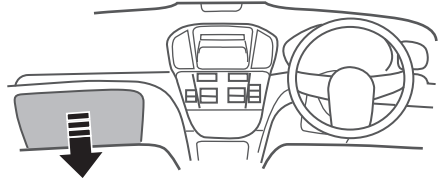
7



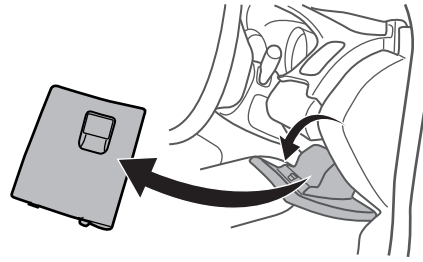
8



1



2

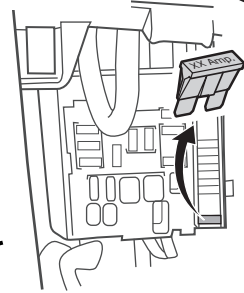


3

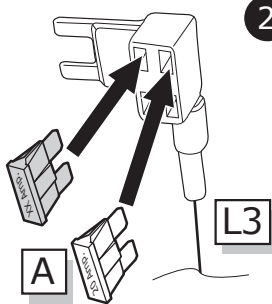
9

Option 1

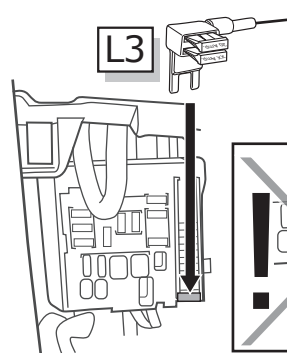
1



2

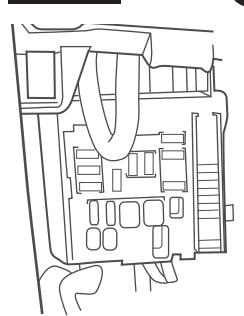


3

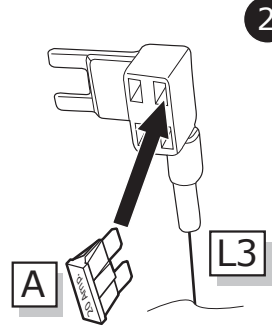


Option 2

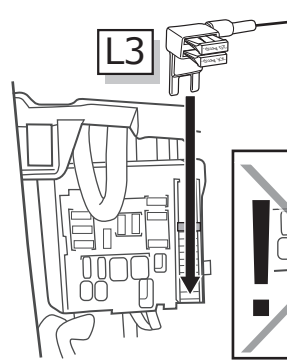
1



2

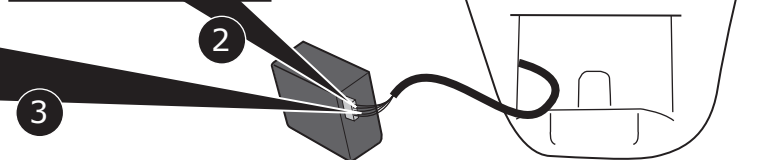
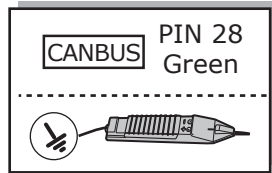
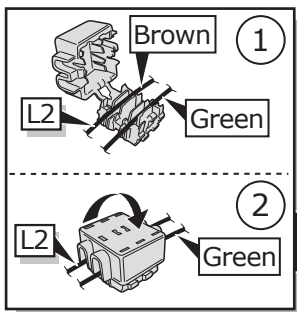
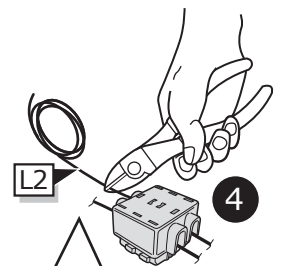
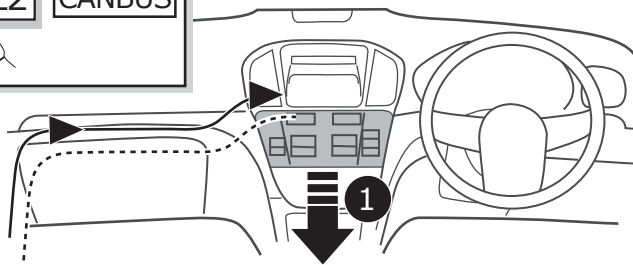
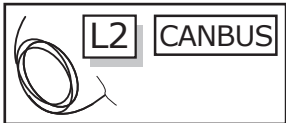
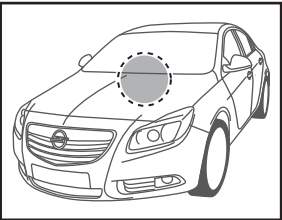


3



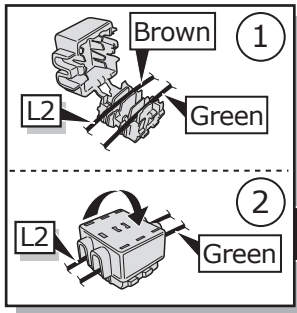
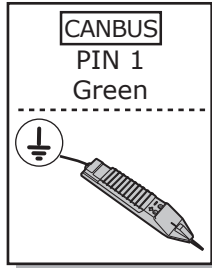
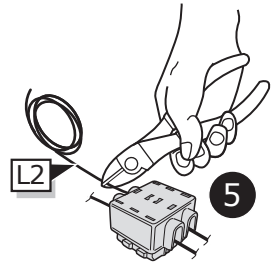
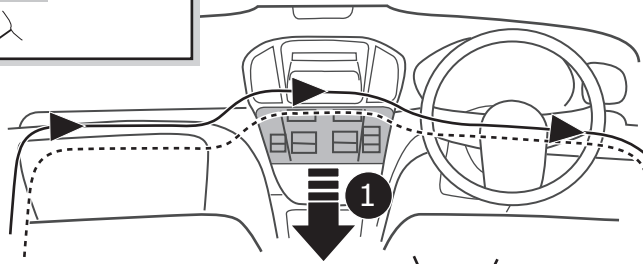
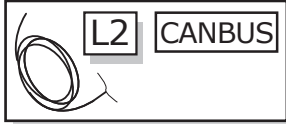
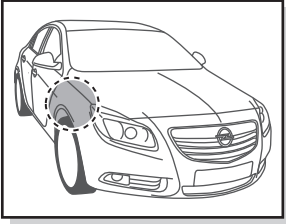
10

Option 1



11

Option 2



3

2

4

12



Pag. 35

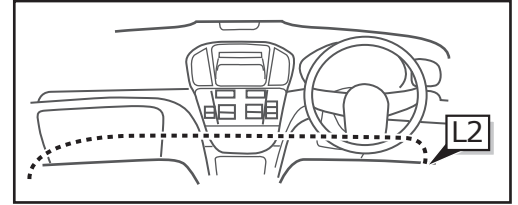
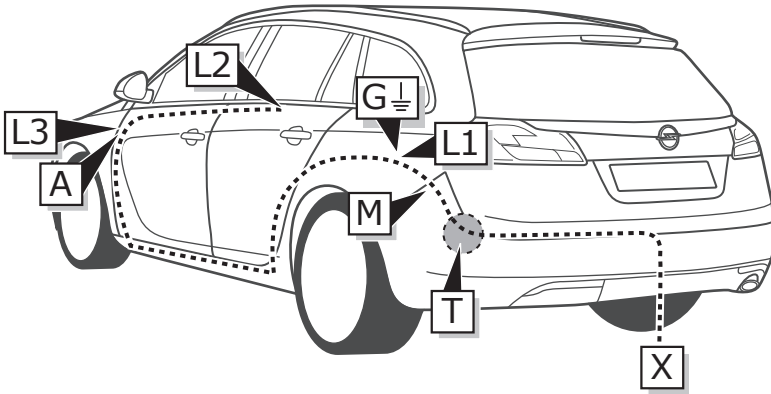
Insignia ST

INFO

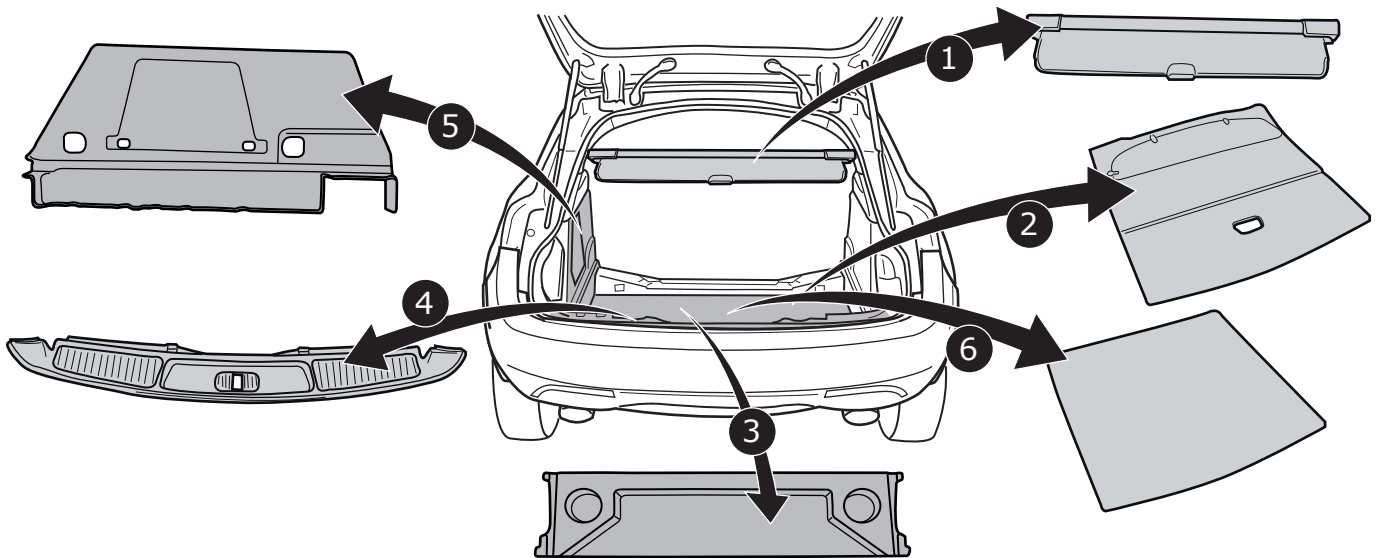
Insignia ST

Pag. 13

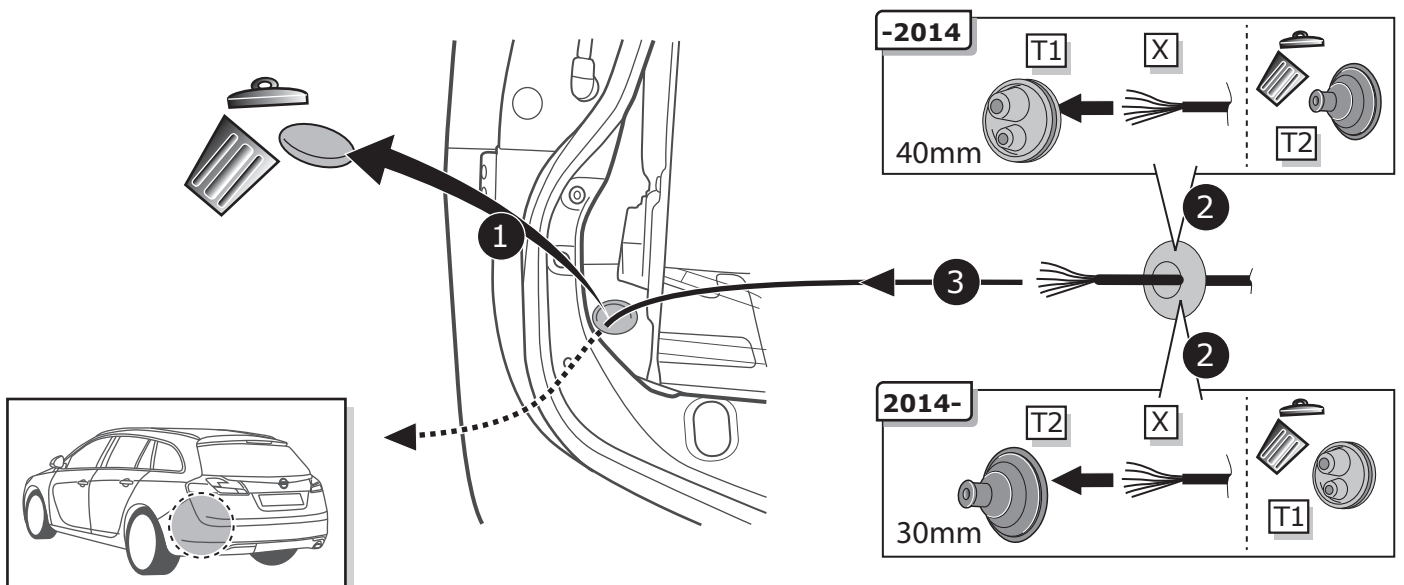
-
Pag. 17



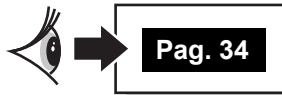
1



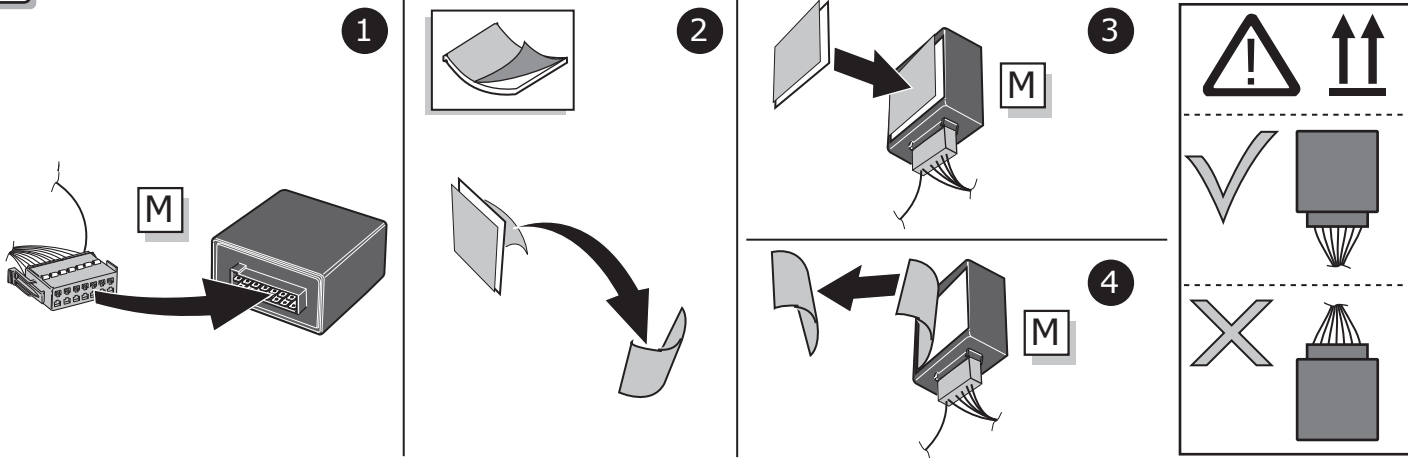
2



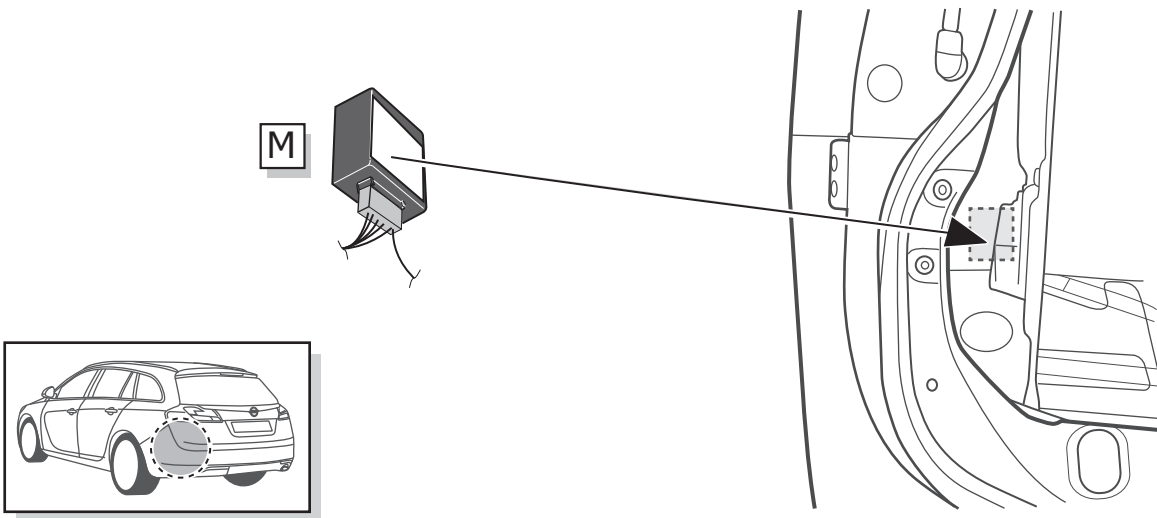
3



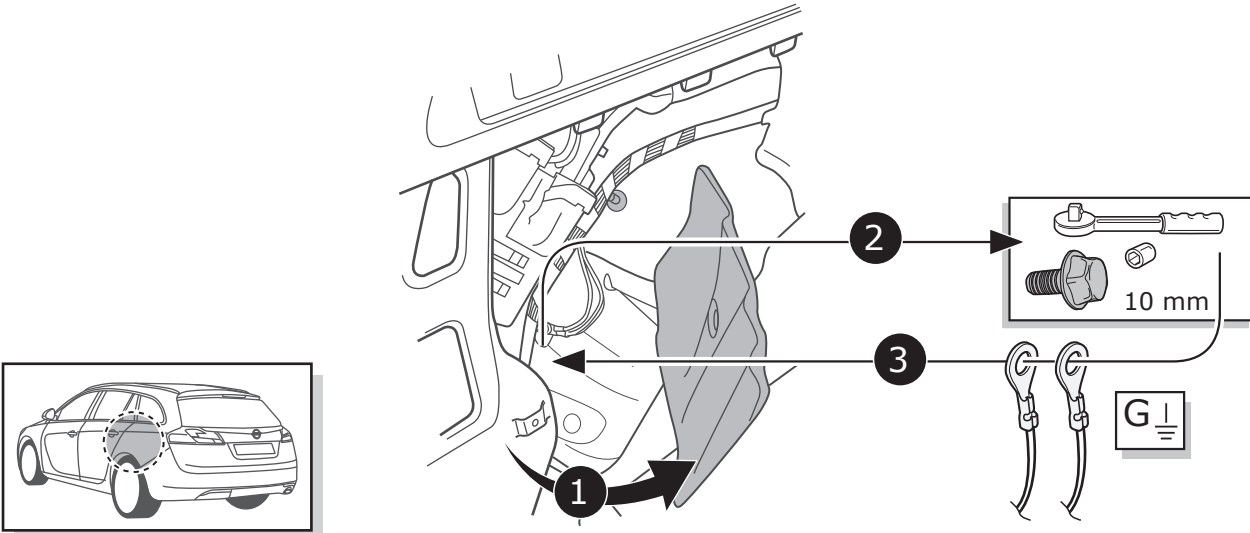
4



5



6



7

-2014

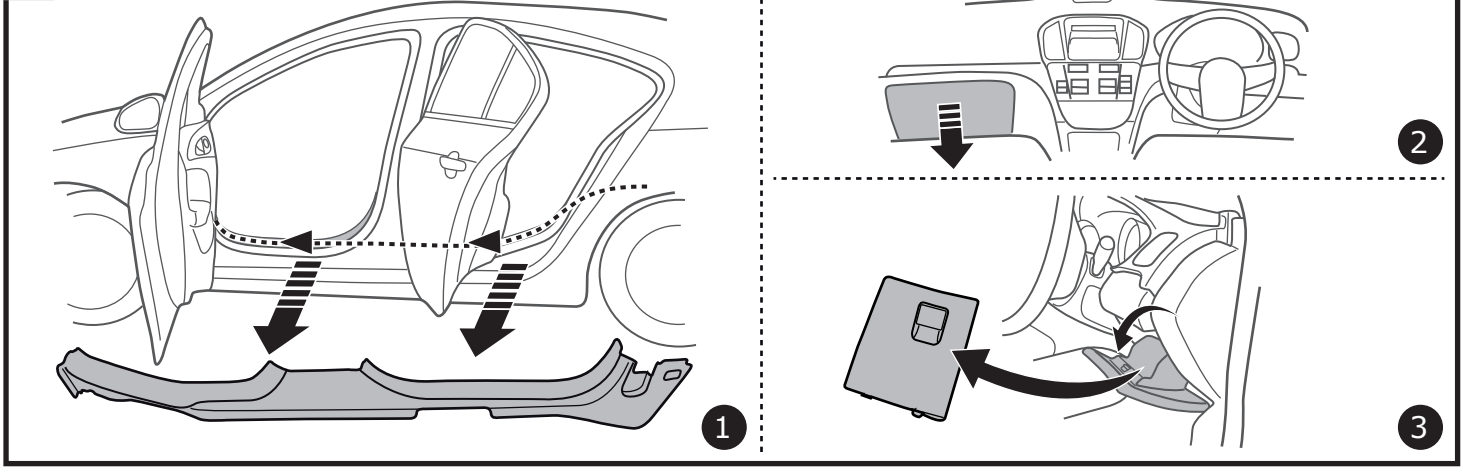


8

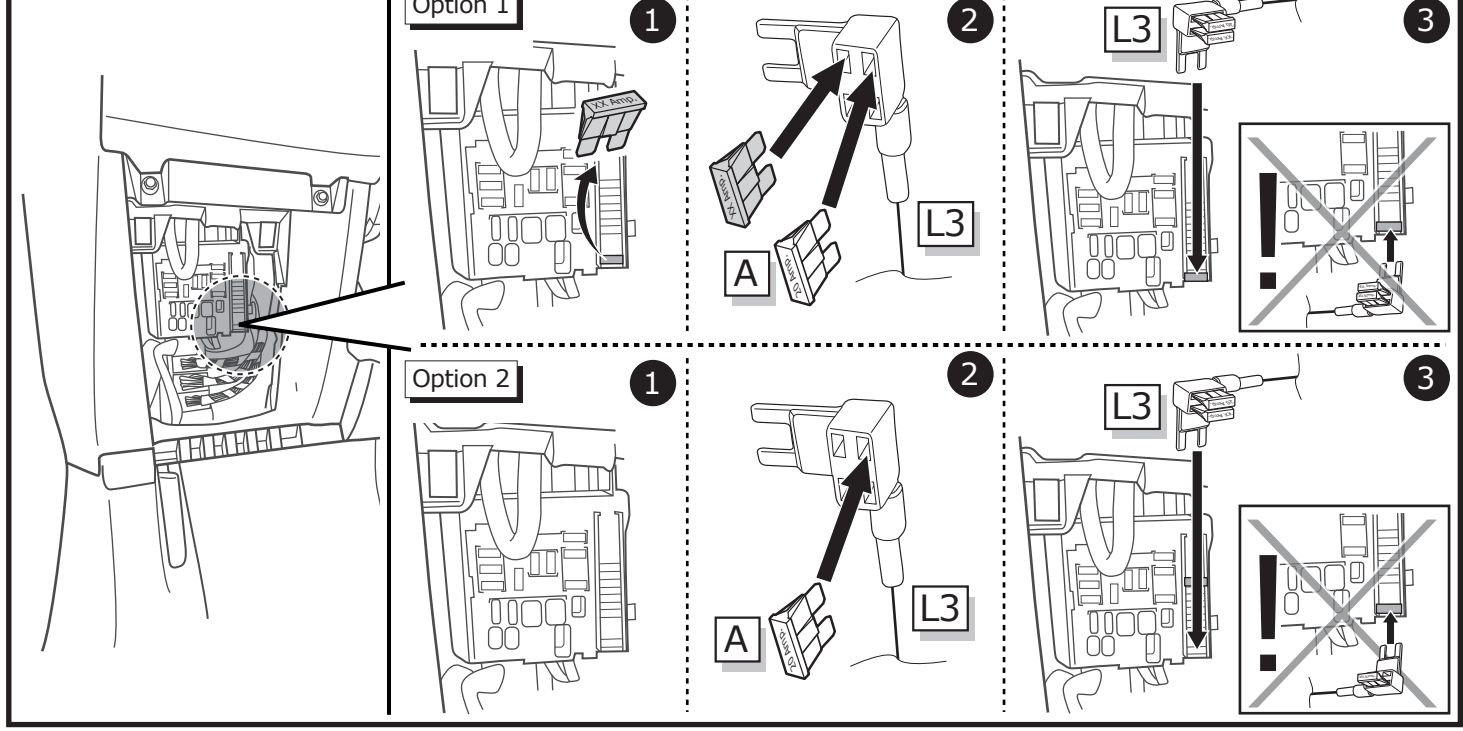
2014-



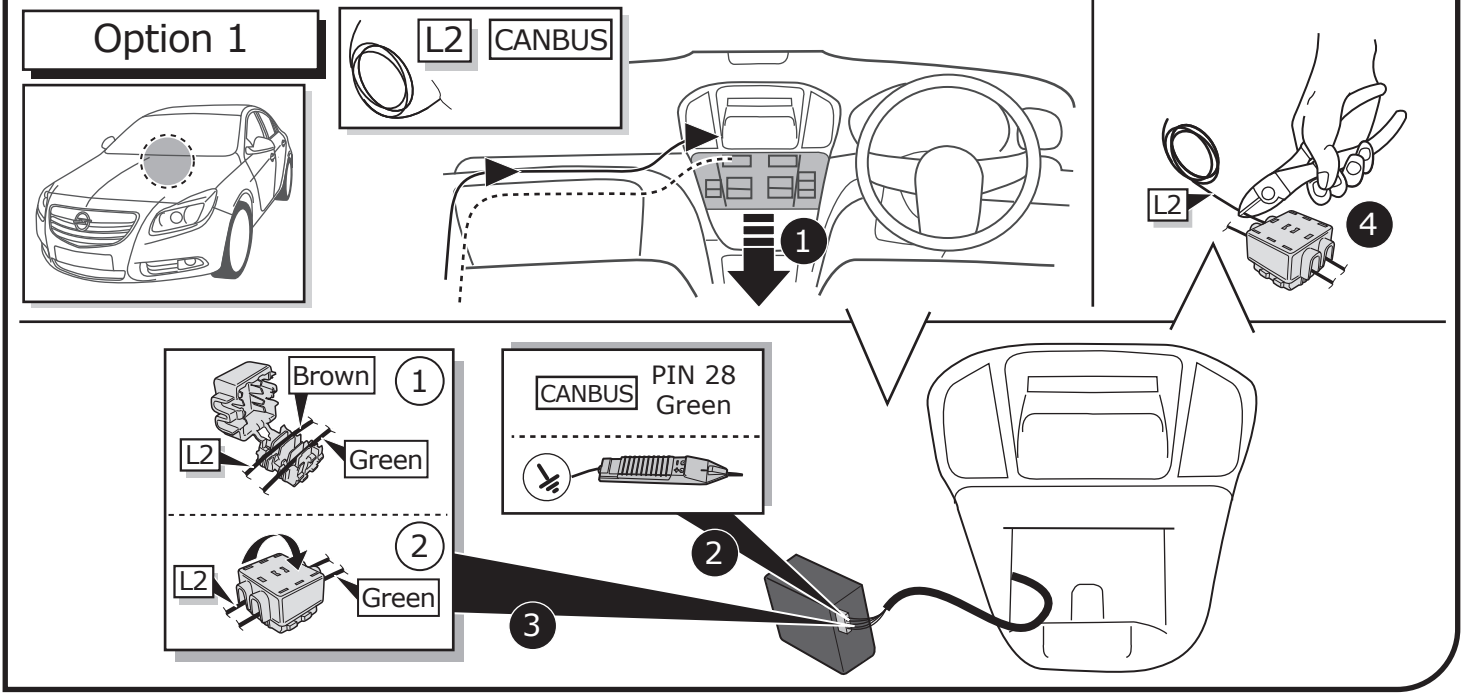
9



10

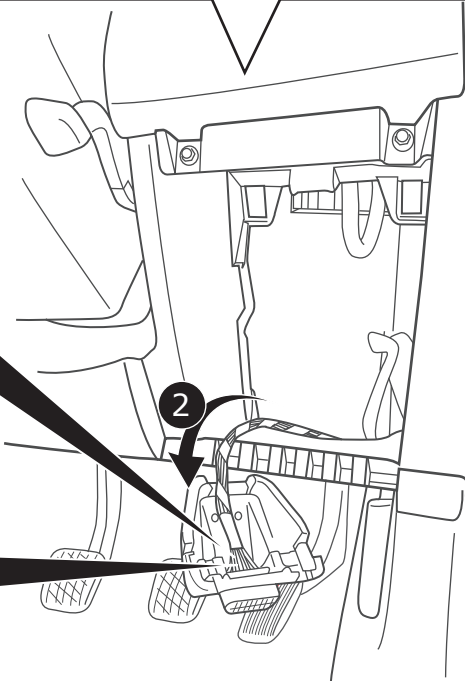
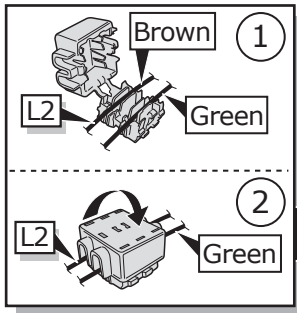
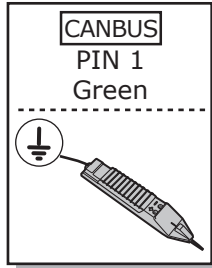
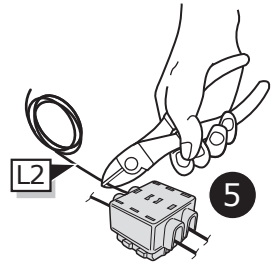
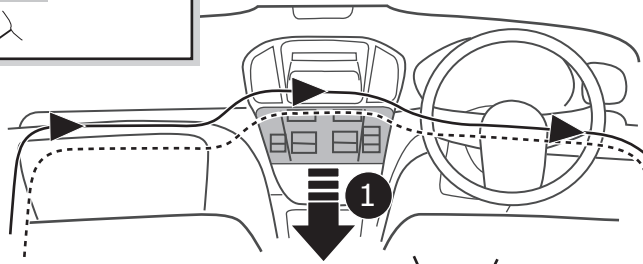
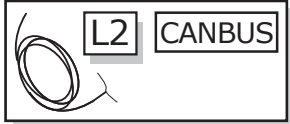
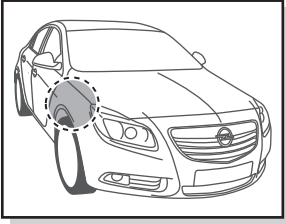


11



12

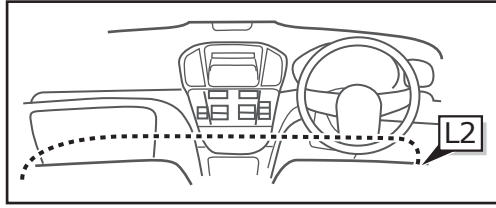
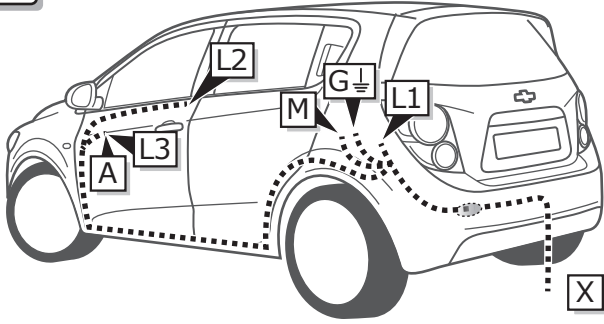
Option 2



13



INFO

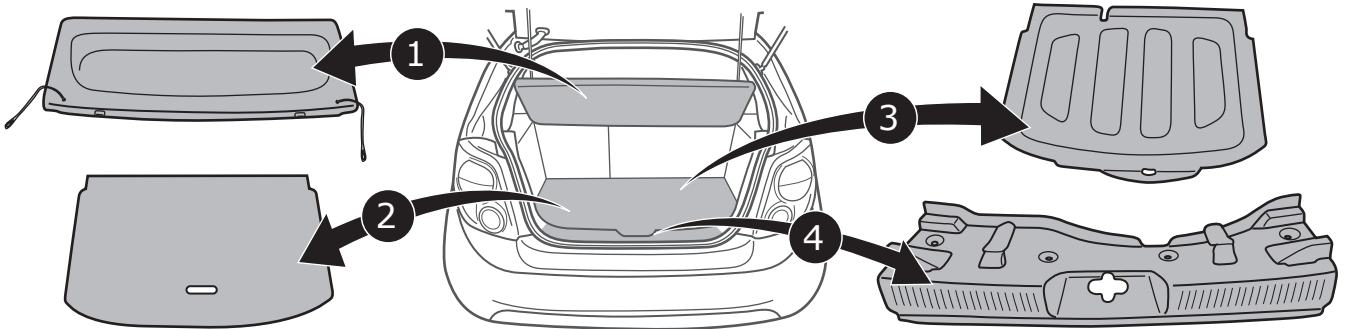


Aveo HB

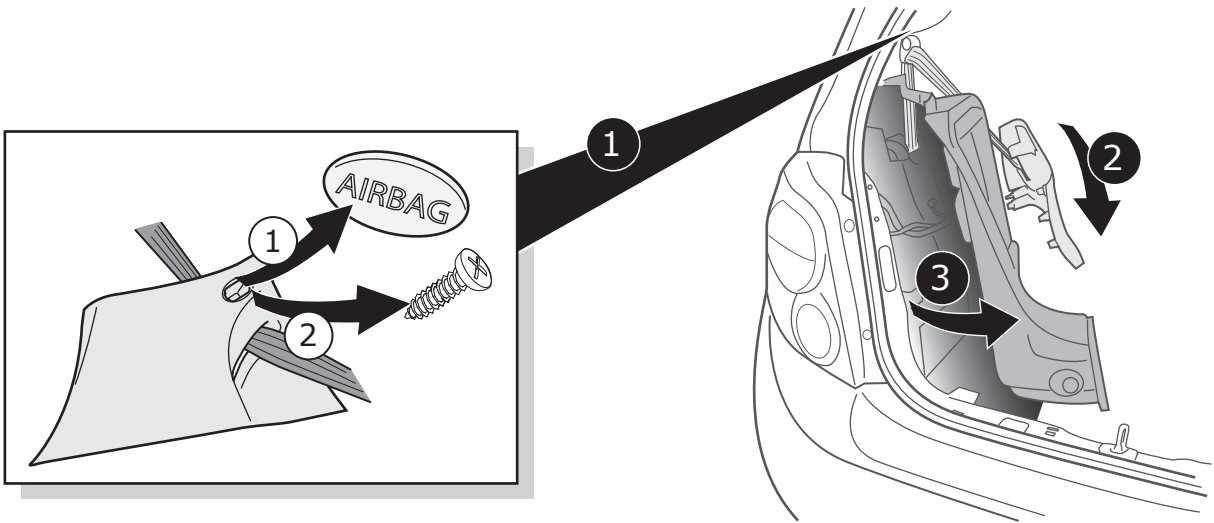
Pag. 18

Pag. 20

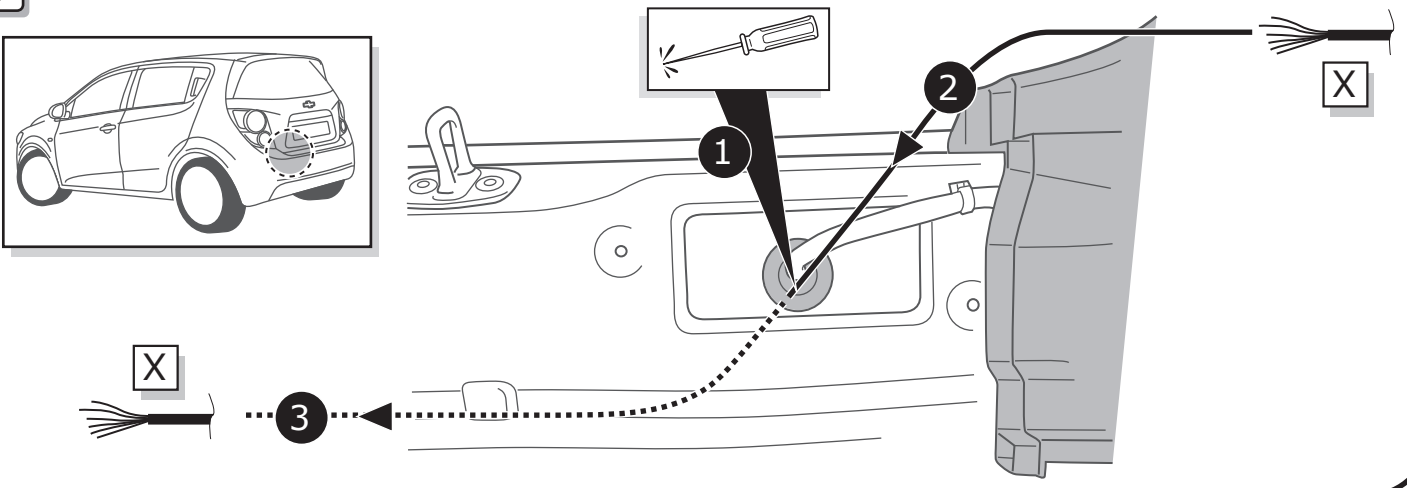
1



2



3

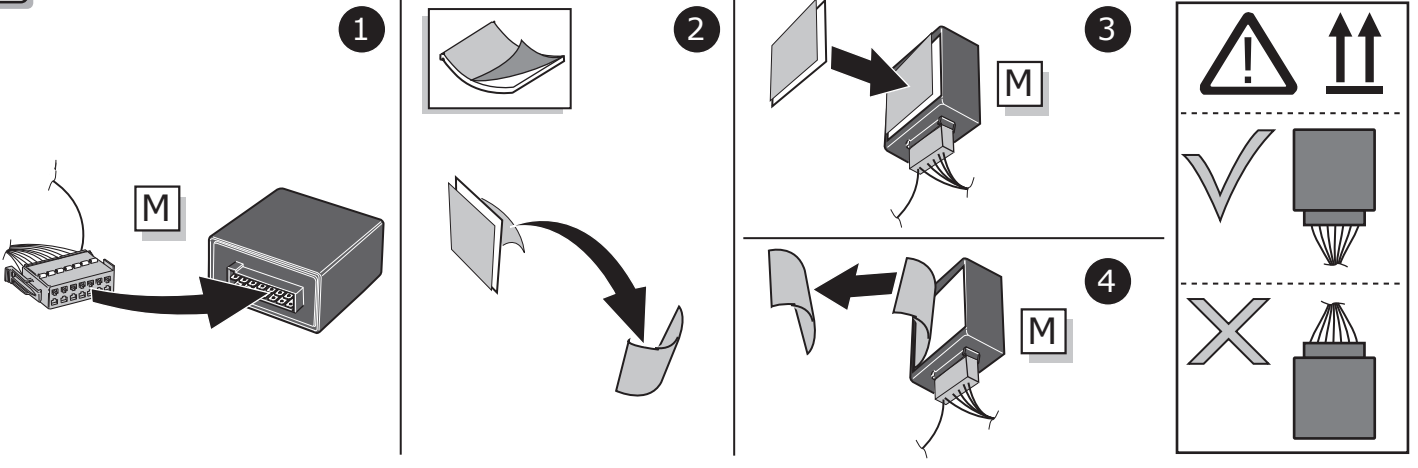


4

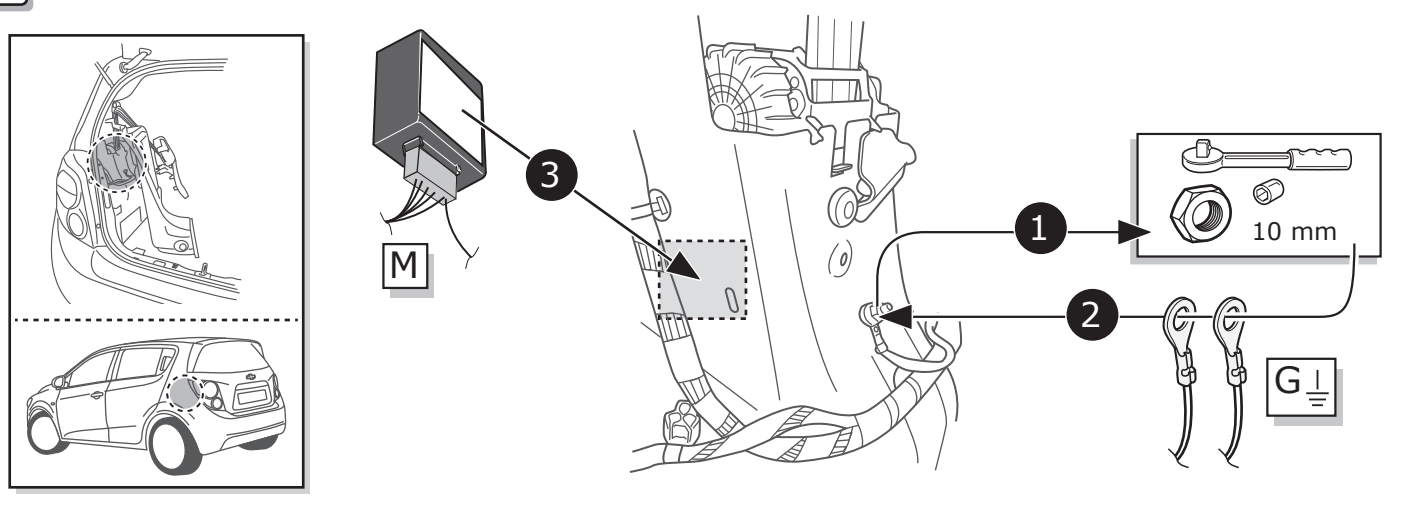


Pag. 34

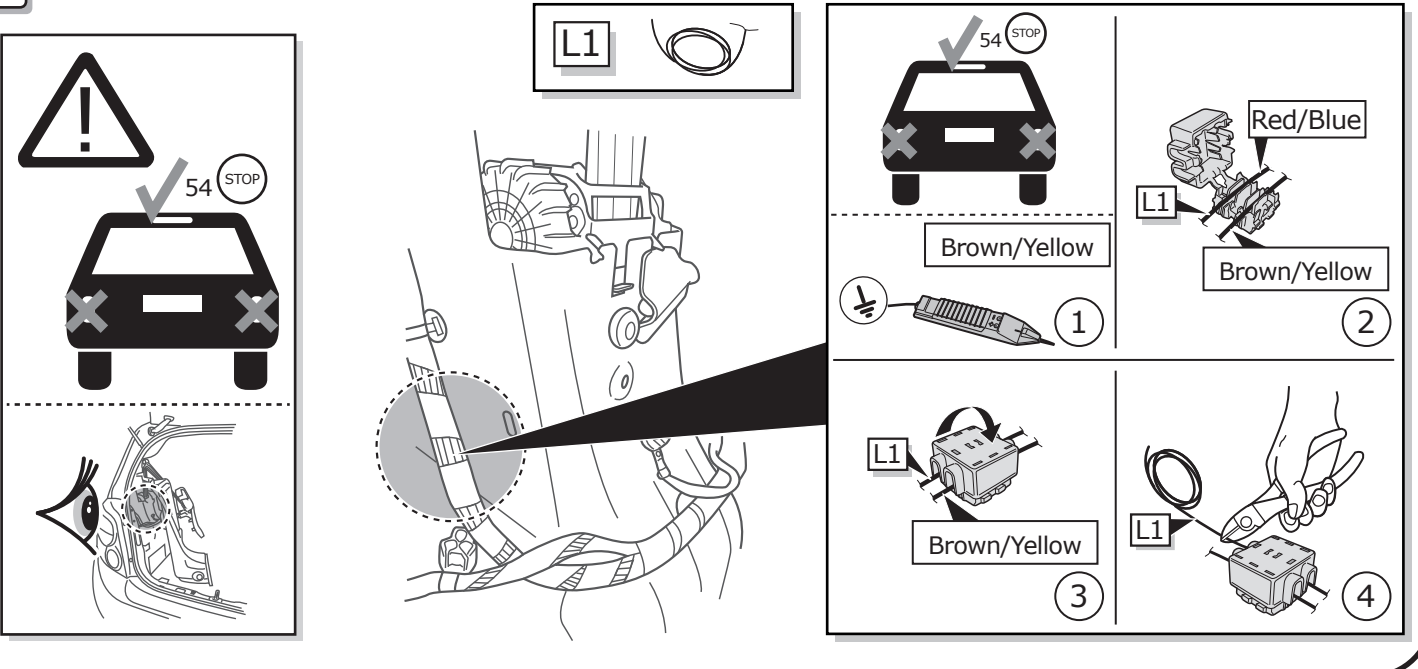
5

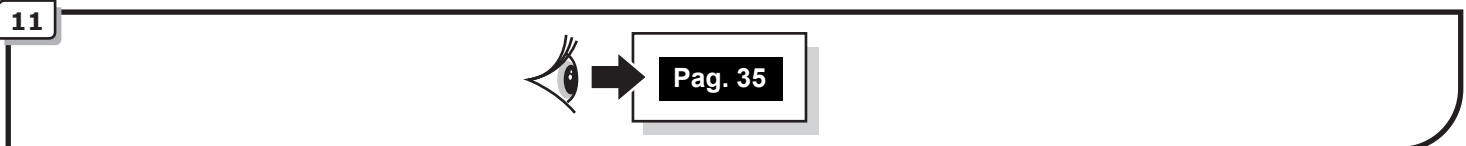
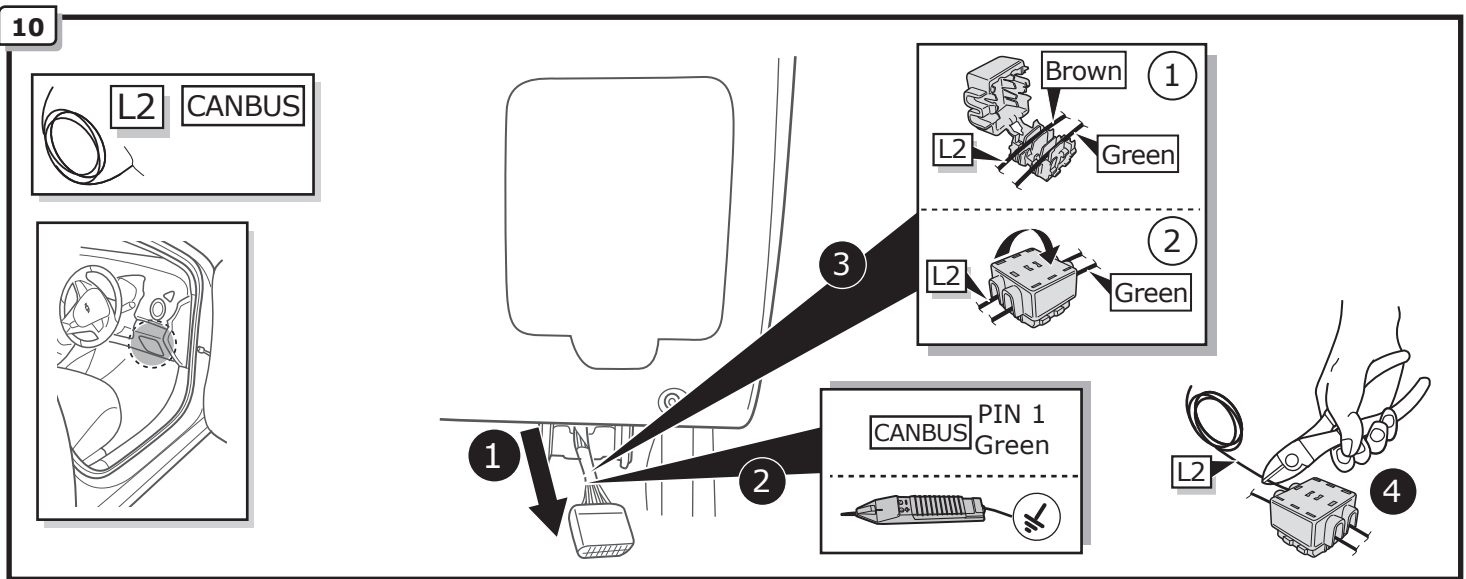
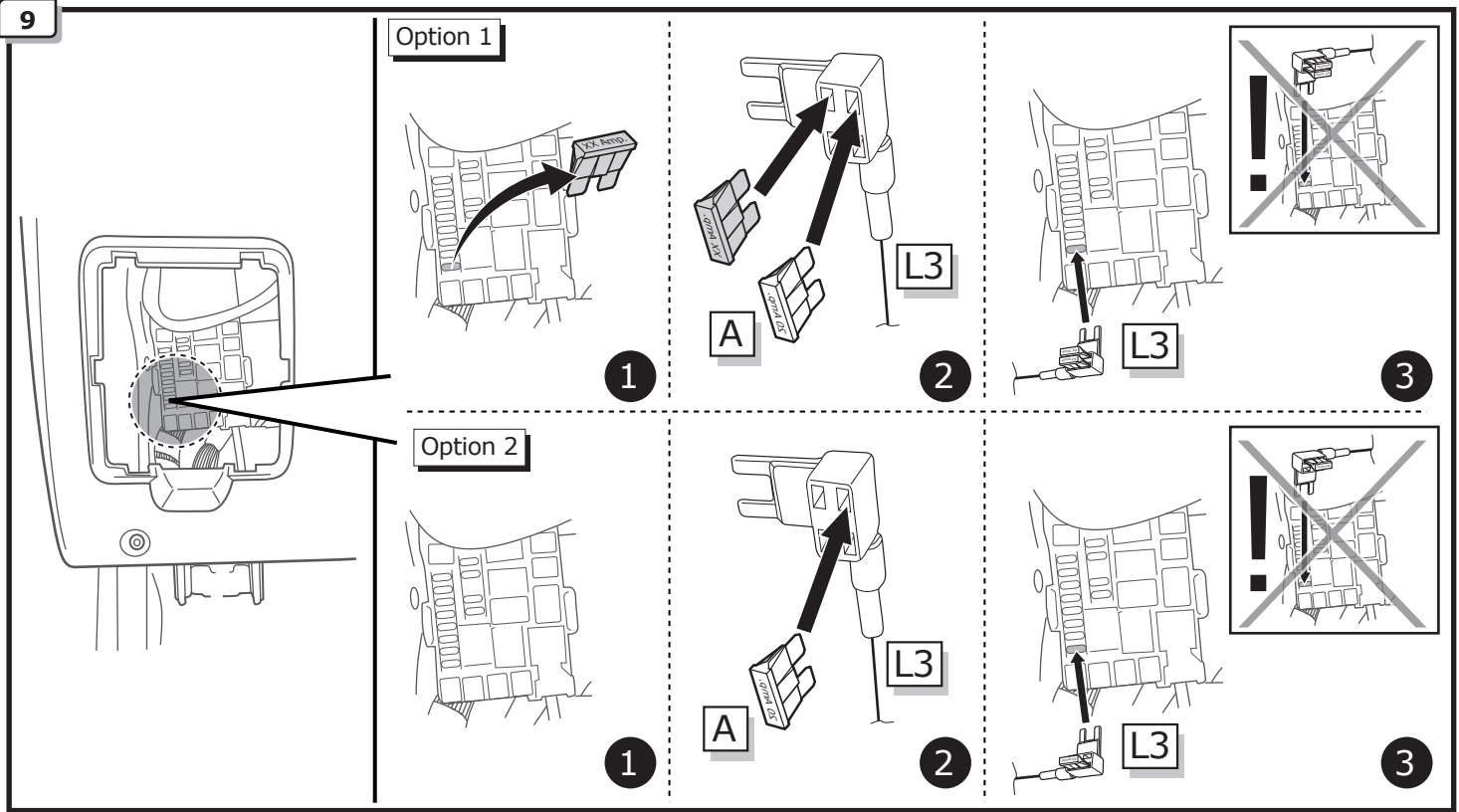
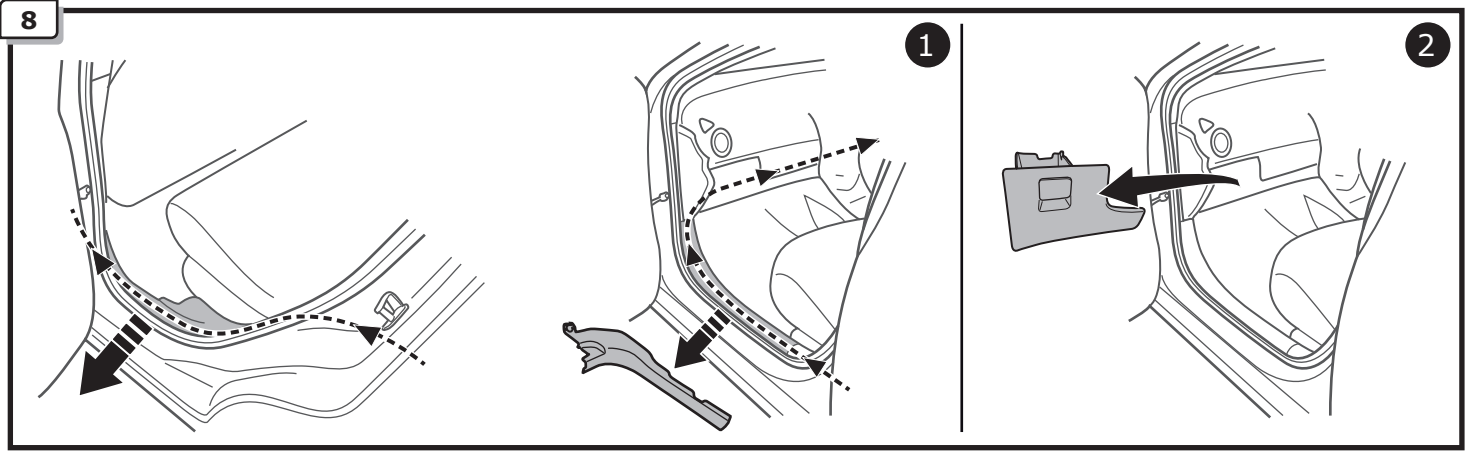


6

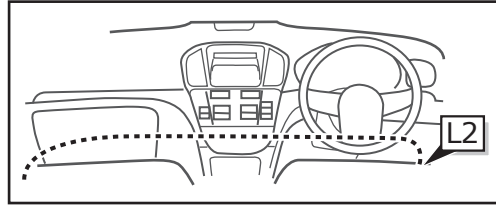
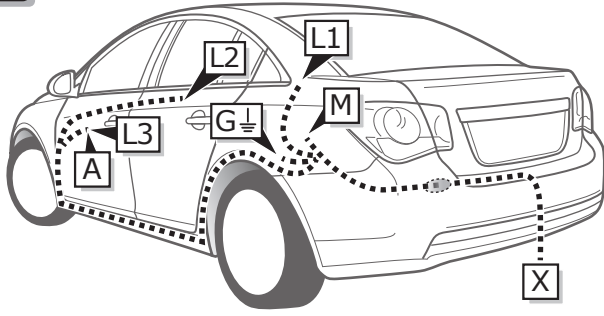


7





INFO

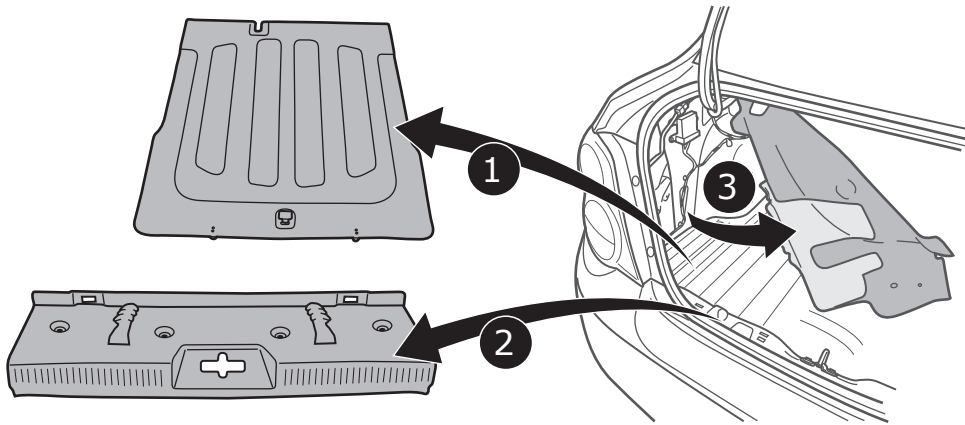


Aveo SD

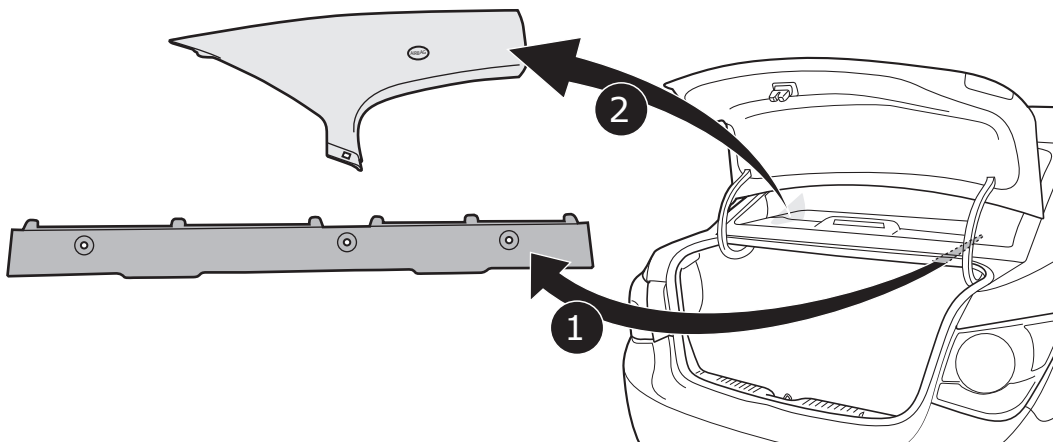
Pag. 21

Pag. 23

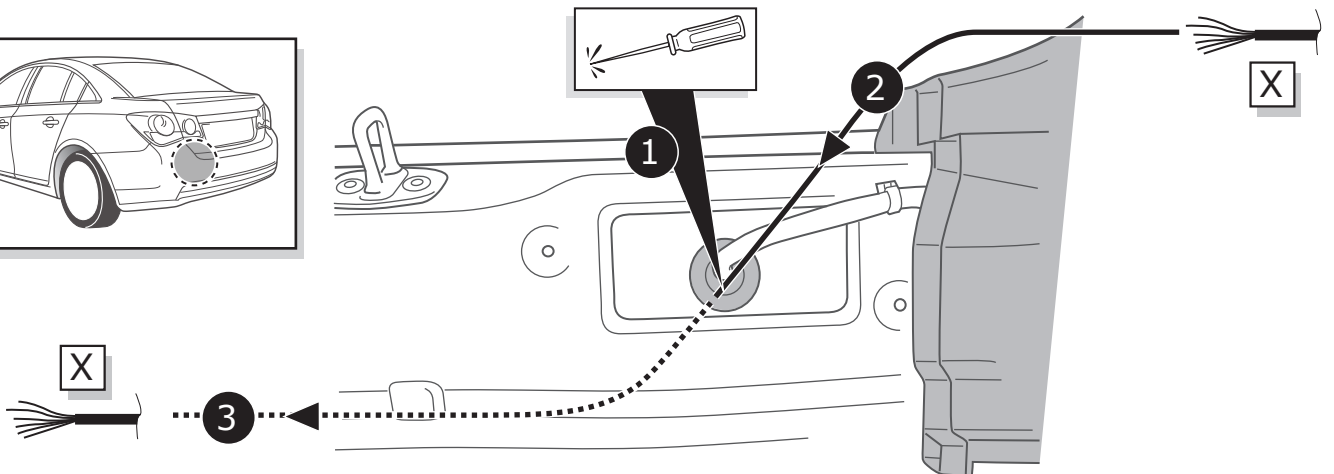
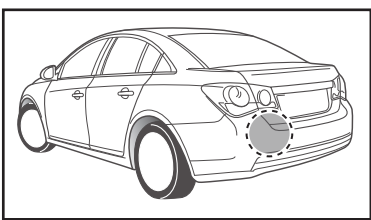
1



2



3

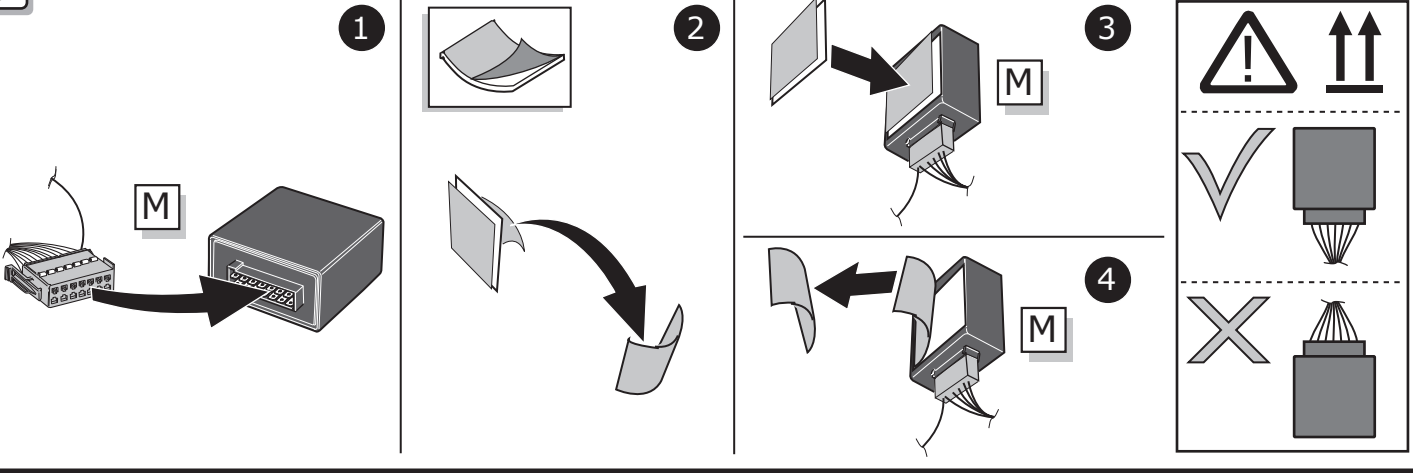


4

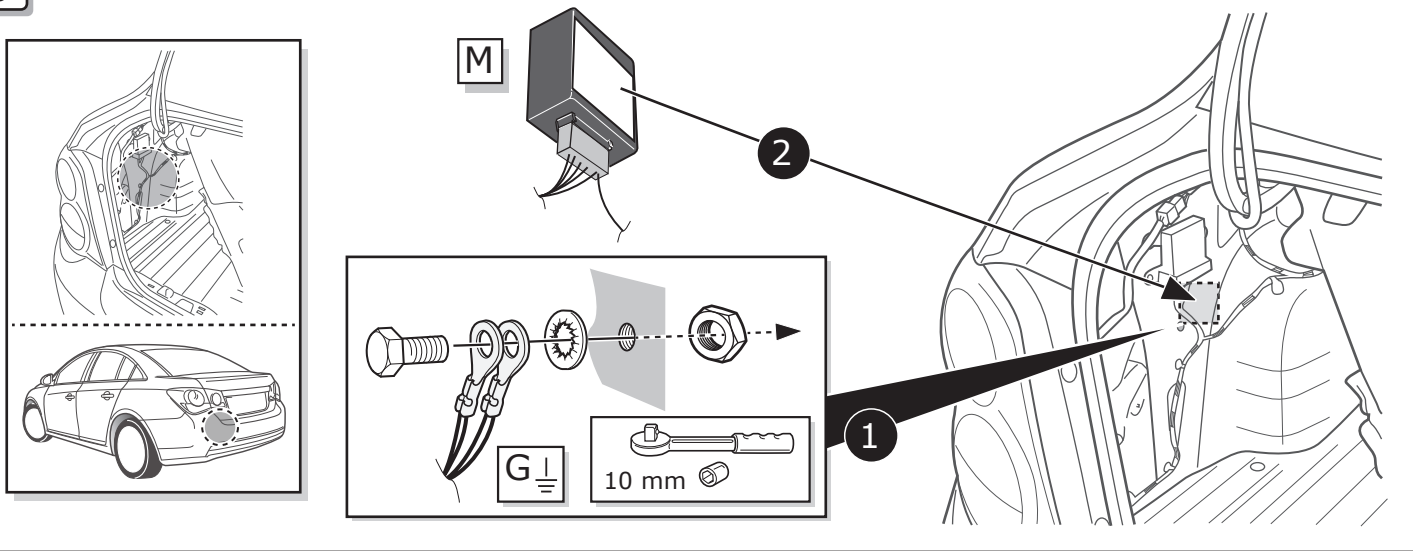


Pag. 34

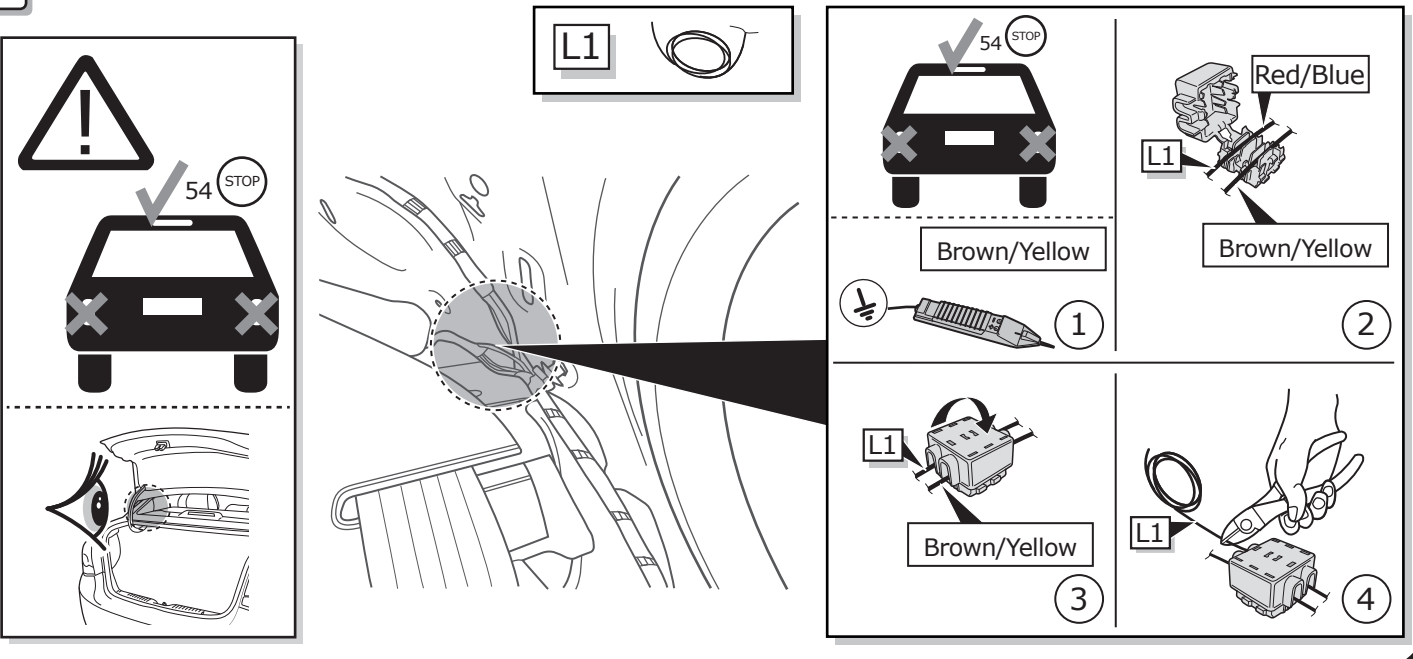
5

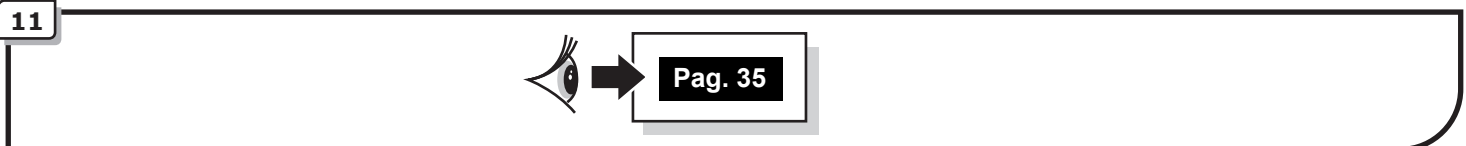
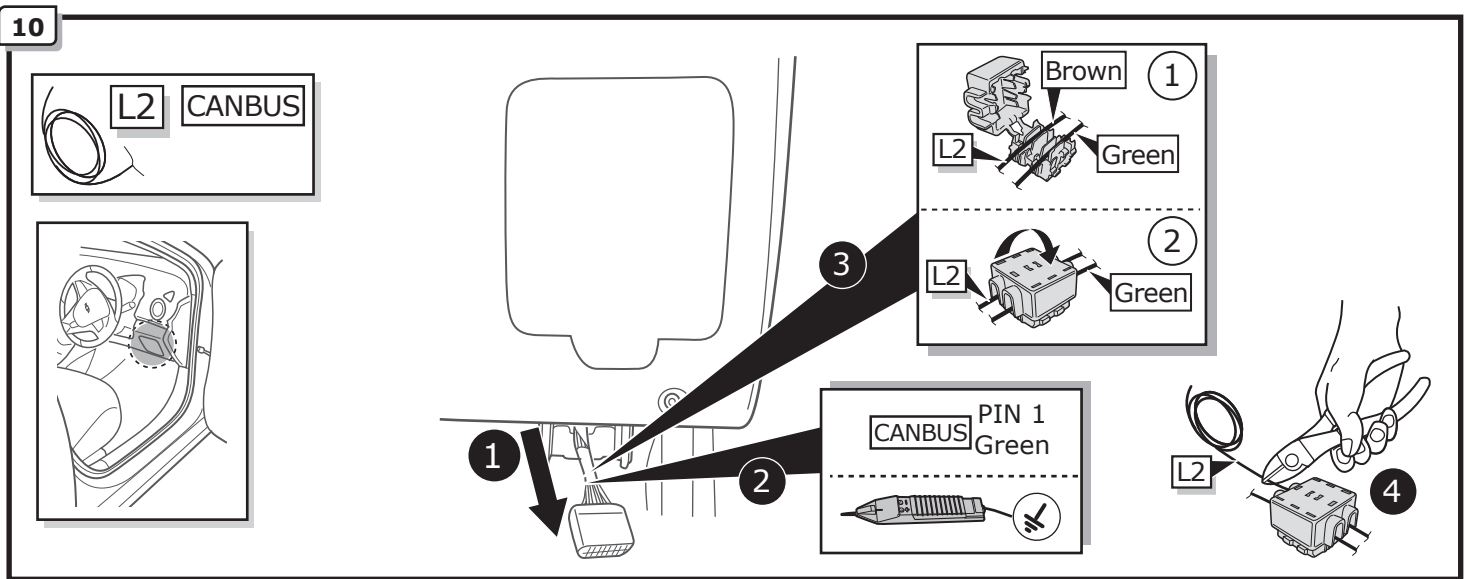
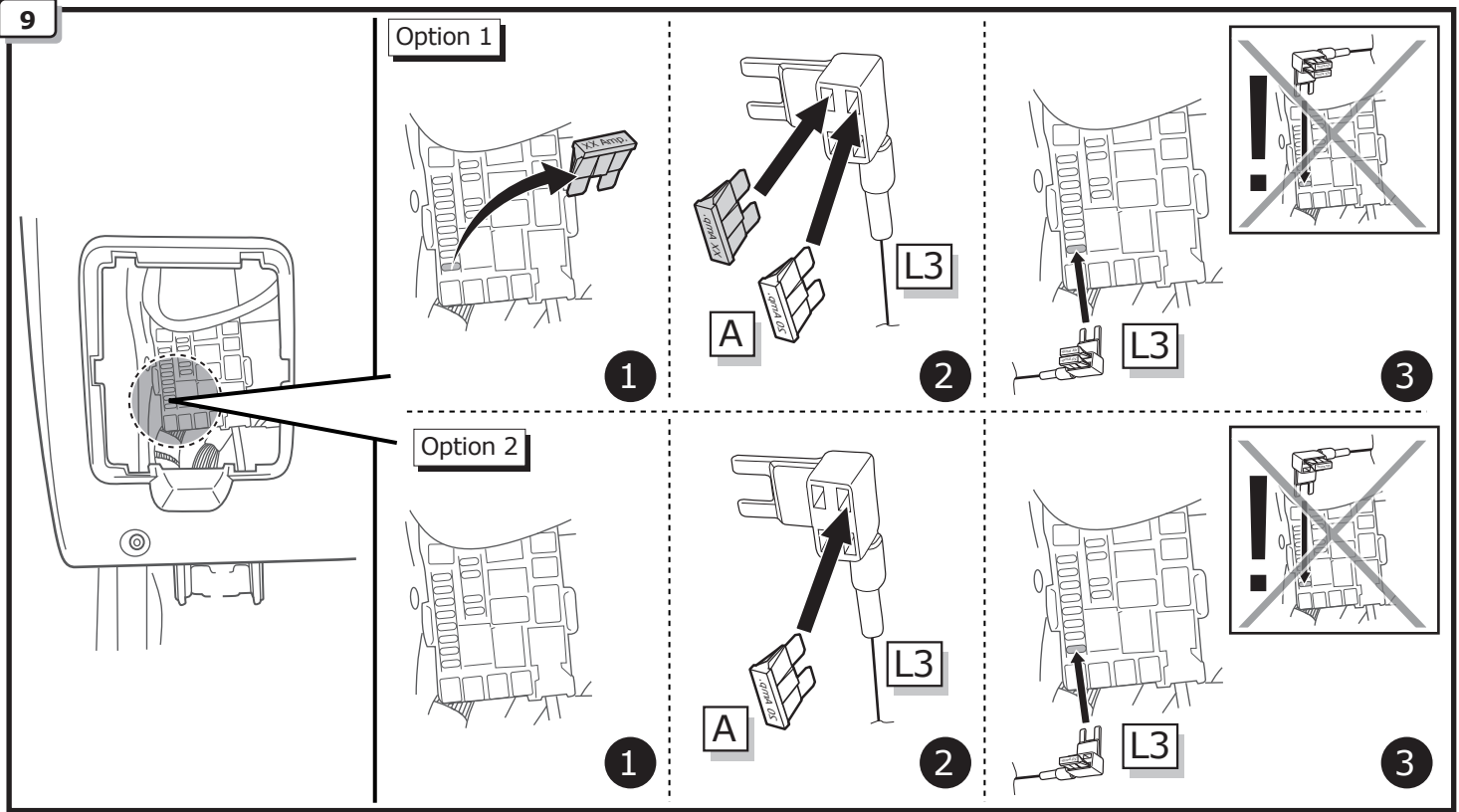
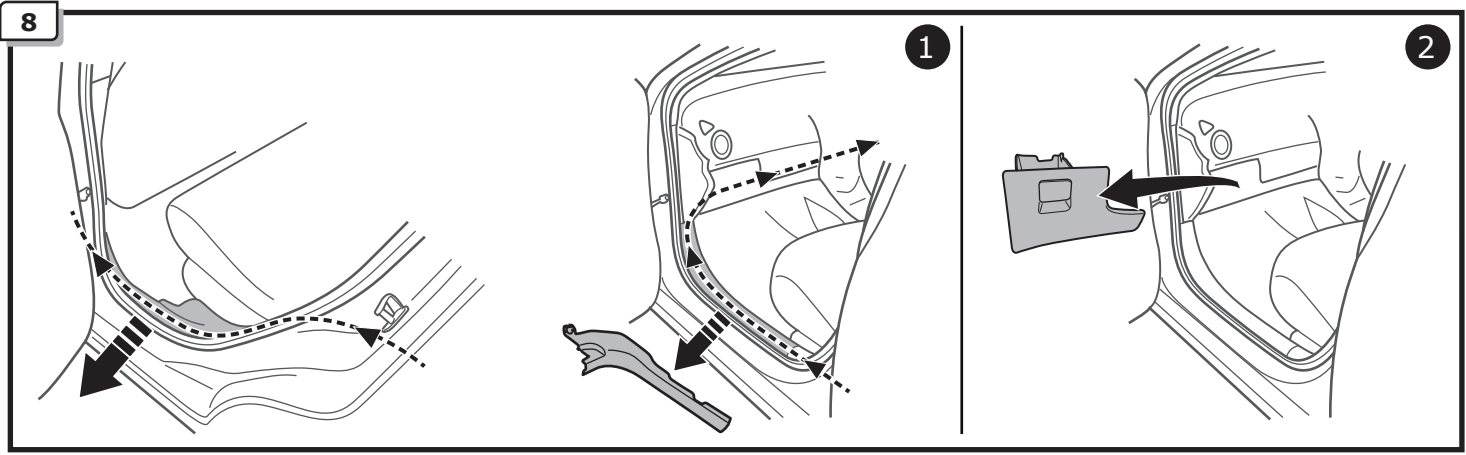


6

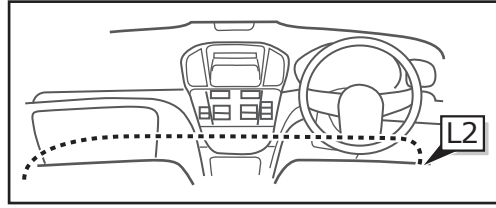
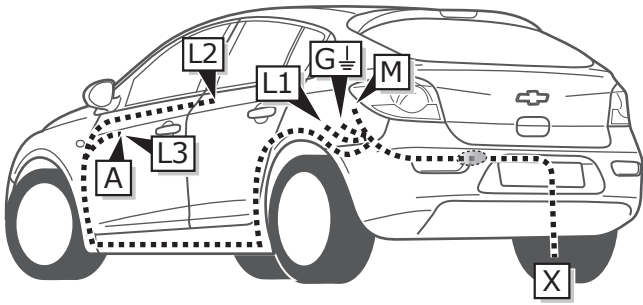


7





INFO

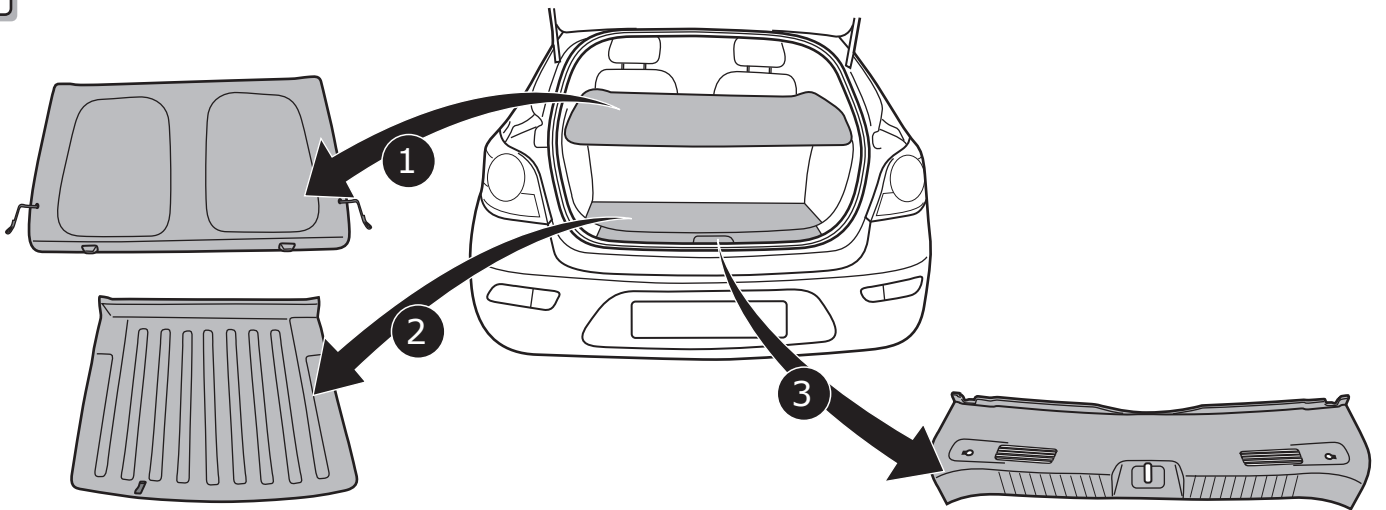


Cruze HB

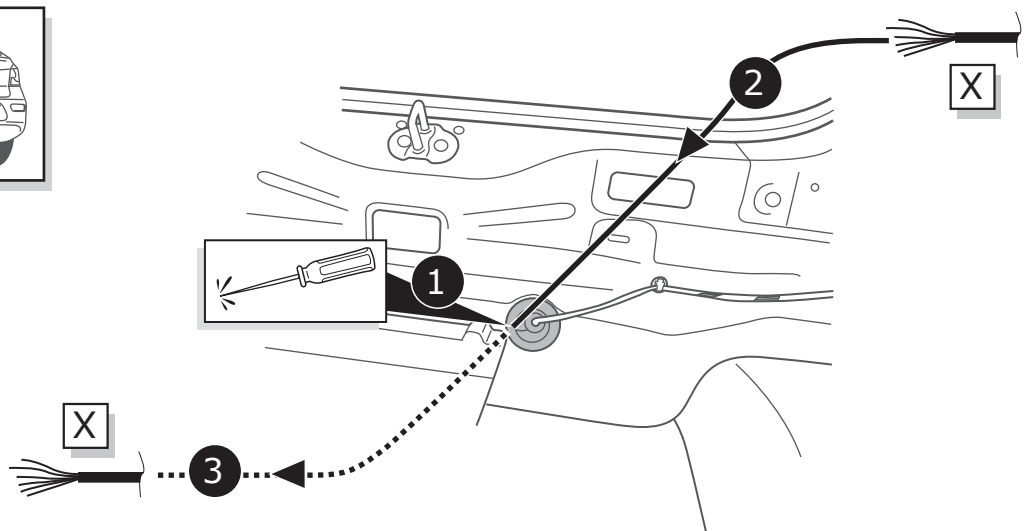
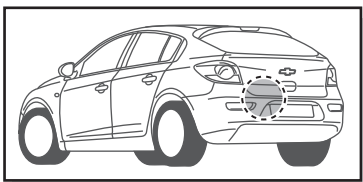
Pag. 24

Pag. 26

1



2

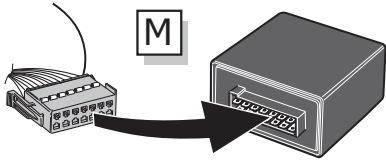


3

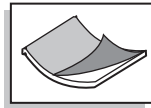


Pag. 34

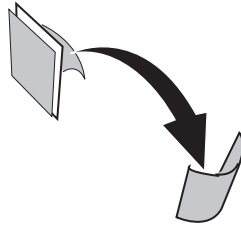
4



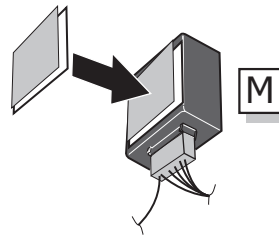
1



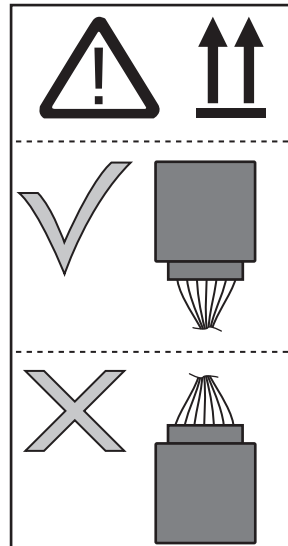
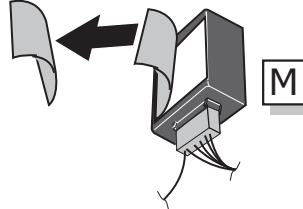
2



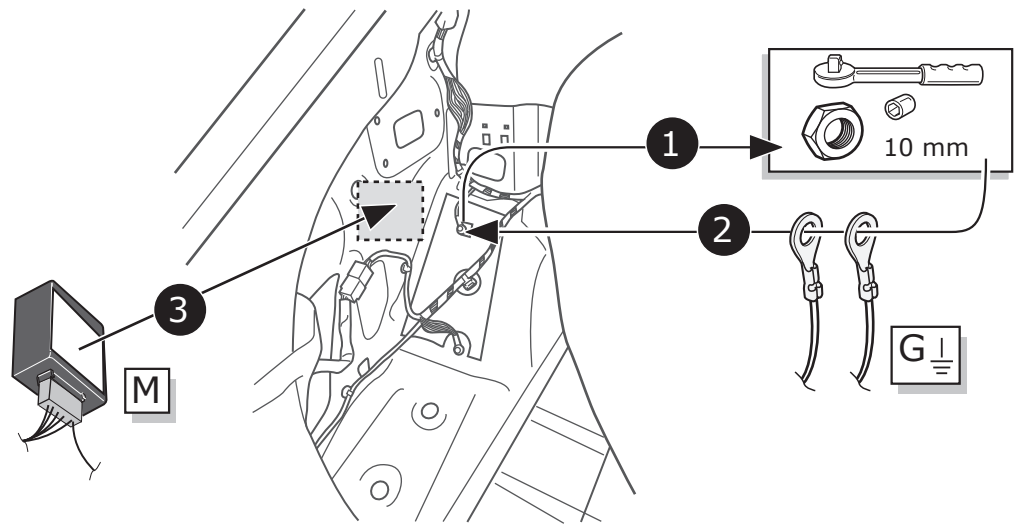
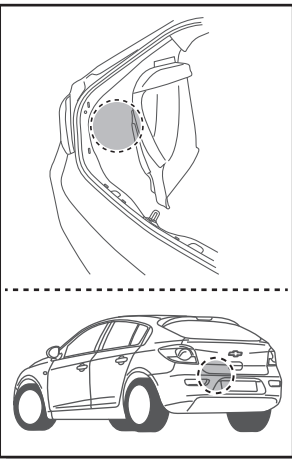
3



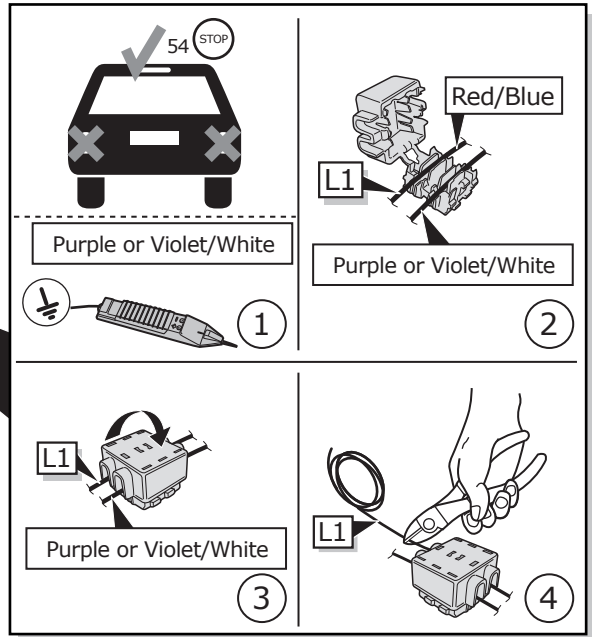
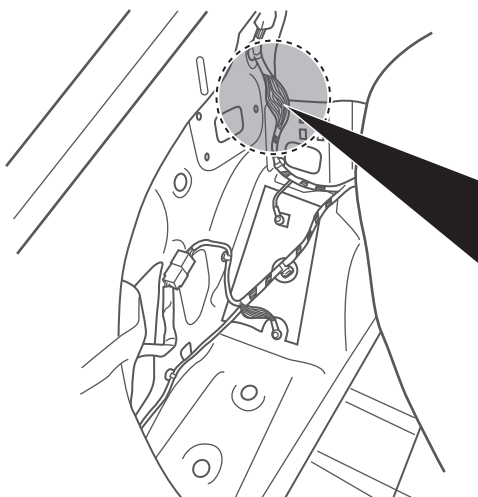
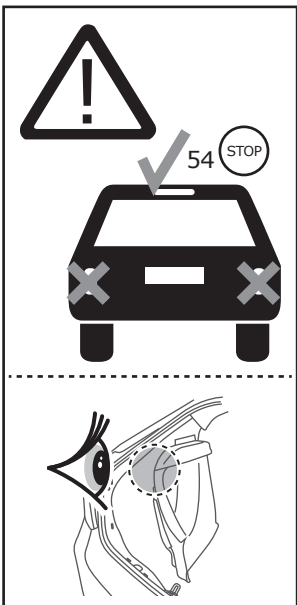
4

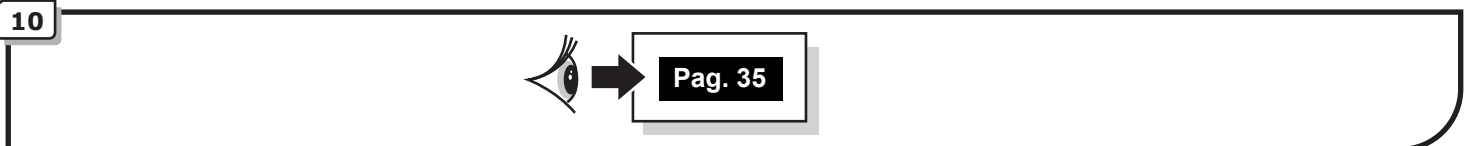
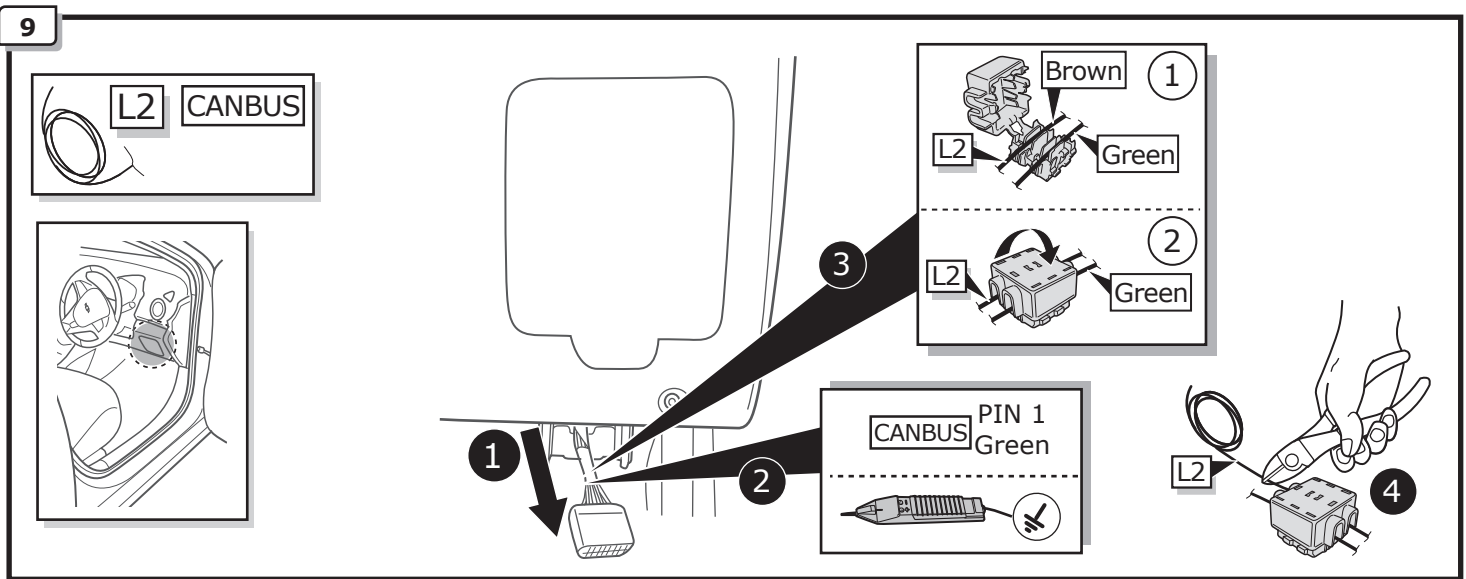
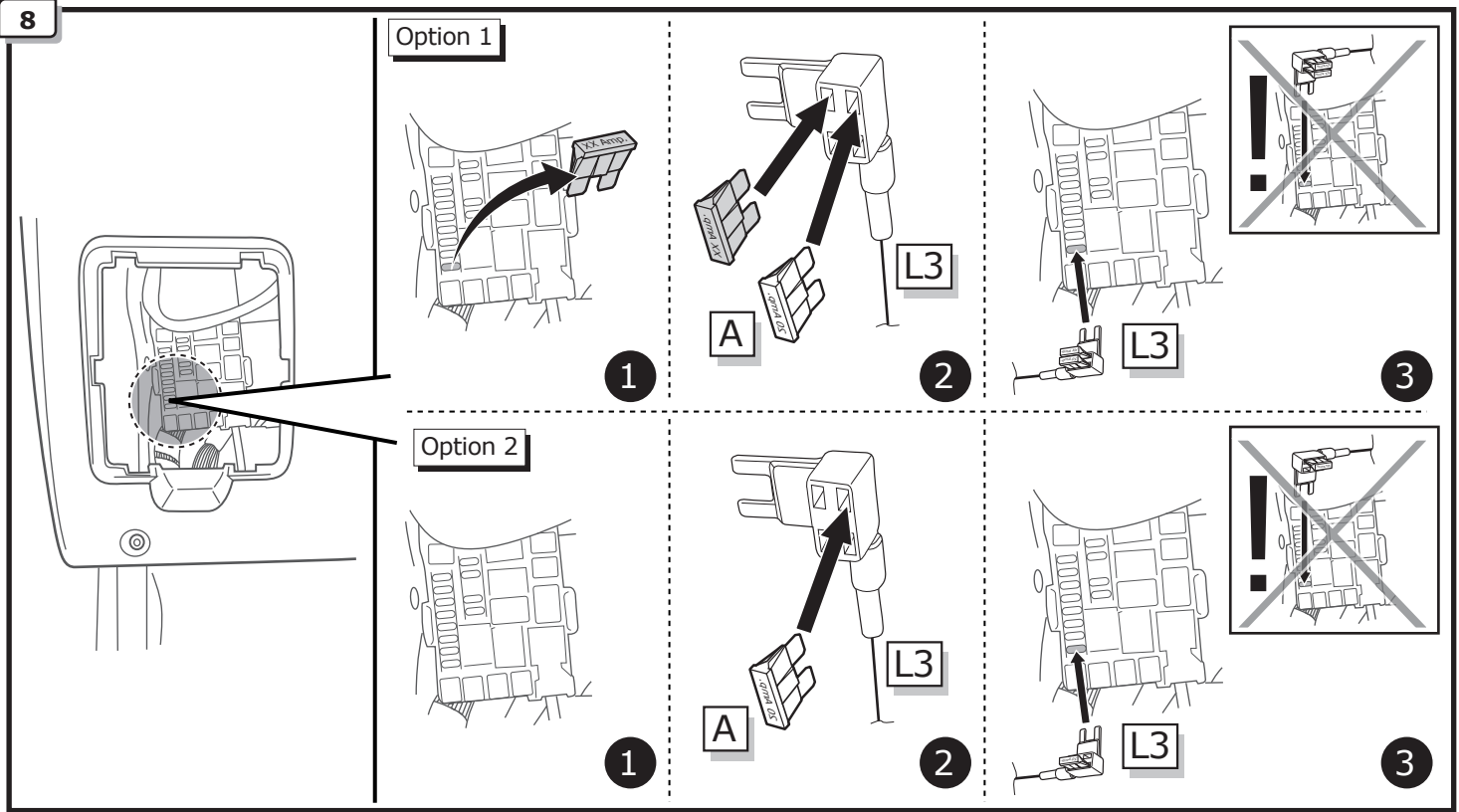
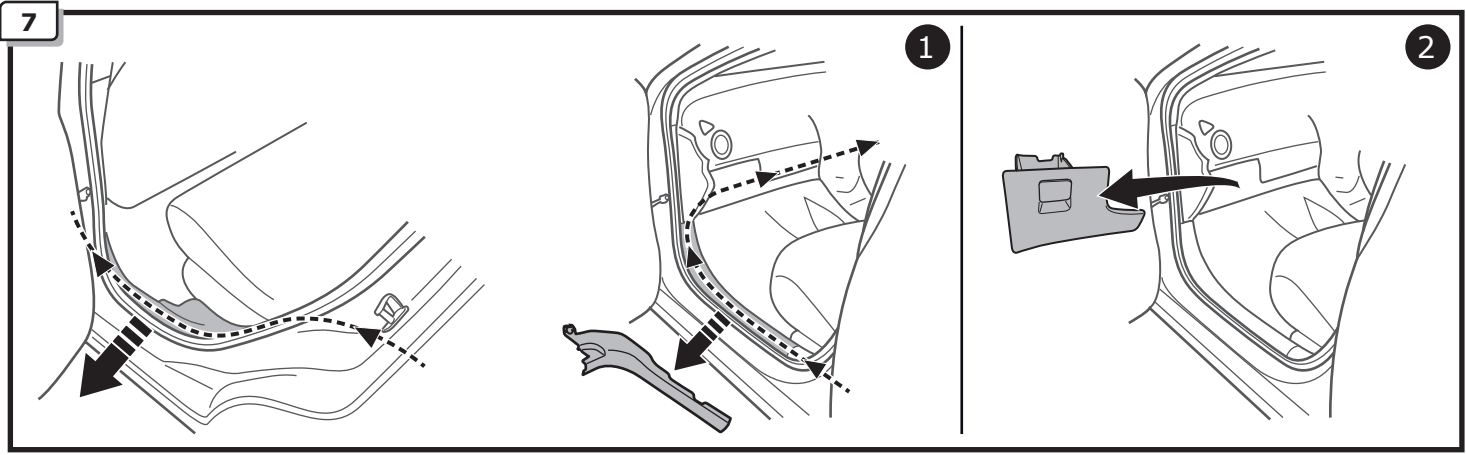


5

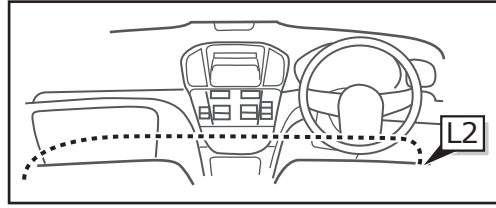
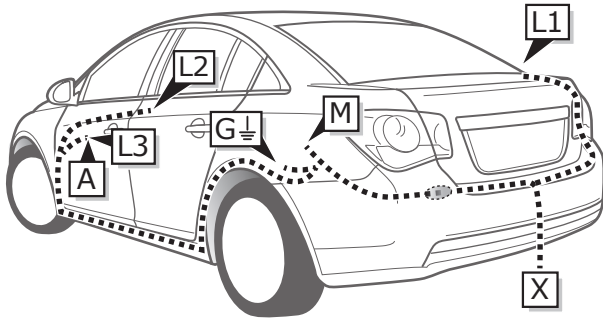


6





INFO

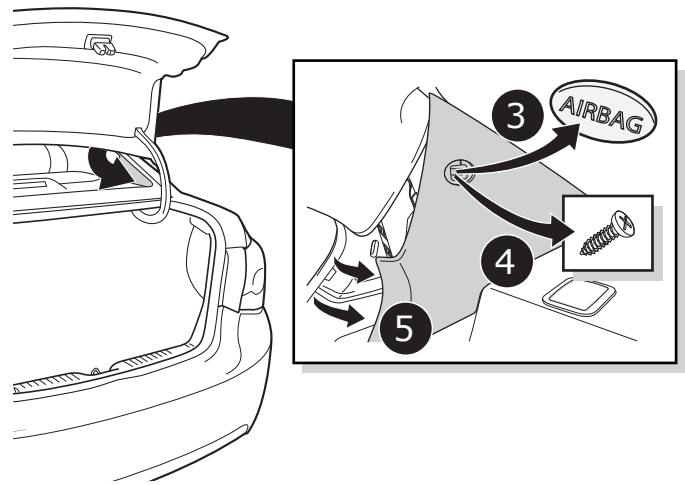
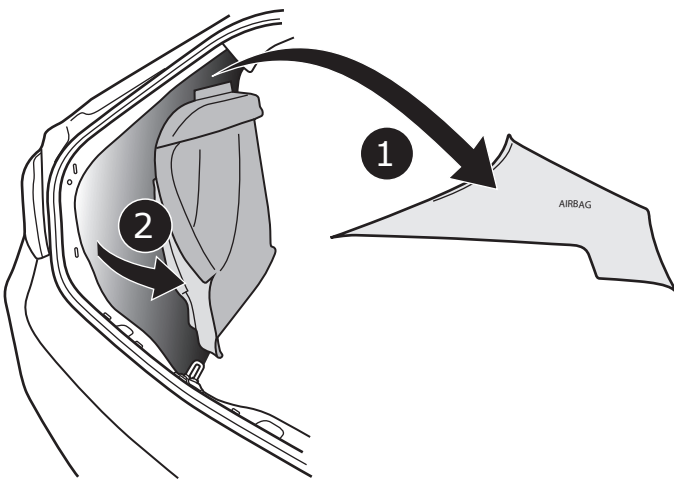


Cruze NB

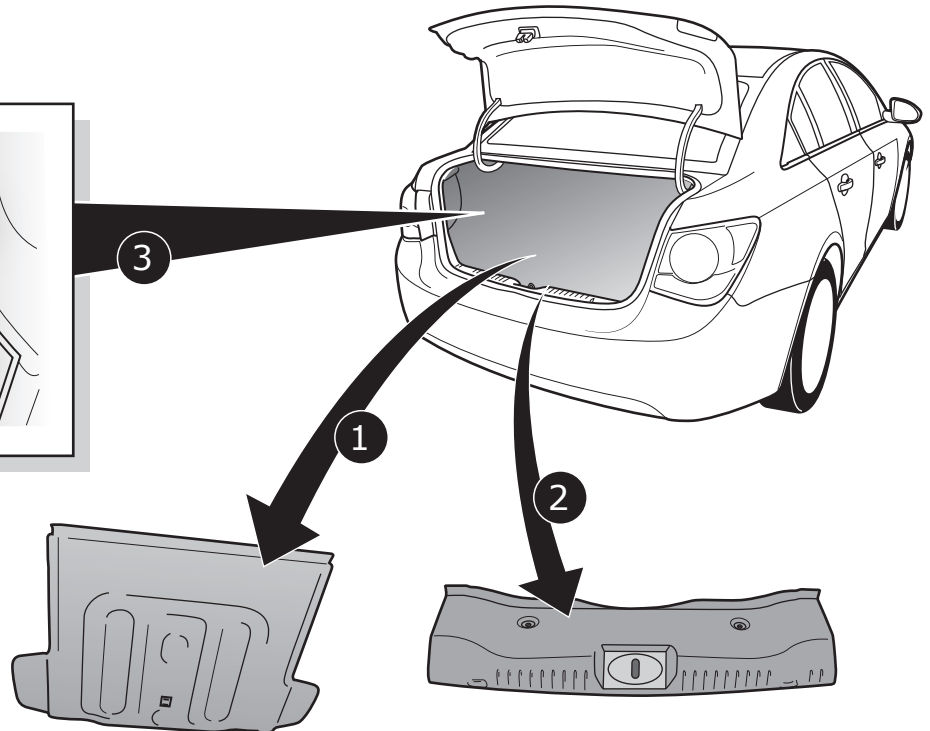
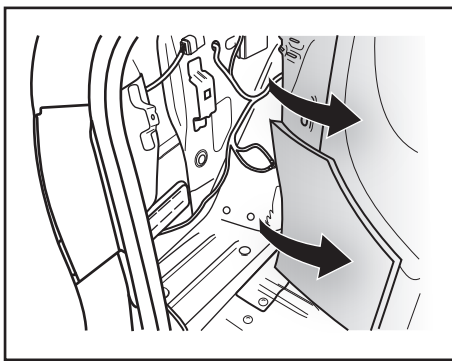
Pag. 27

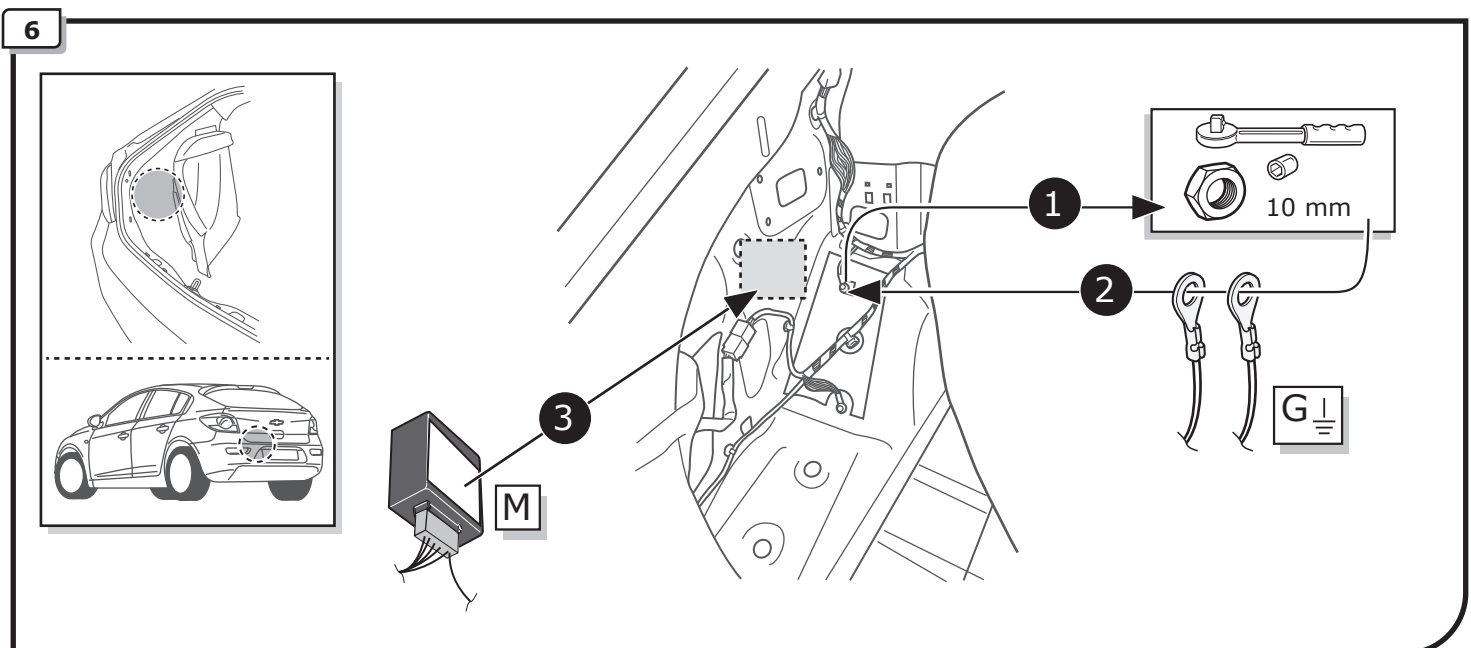
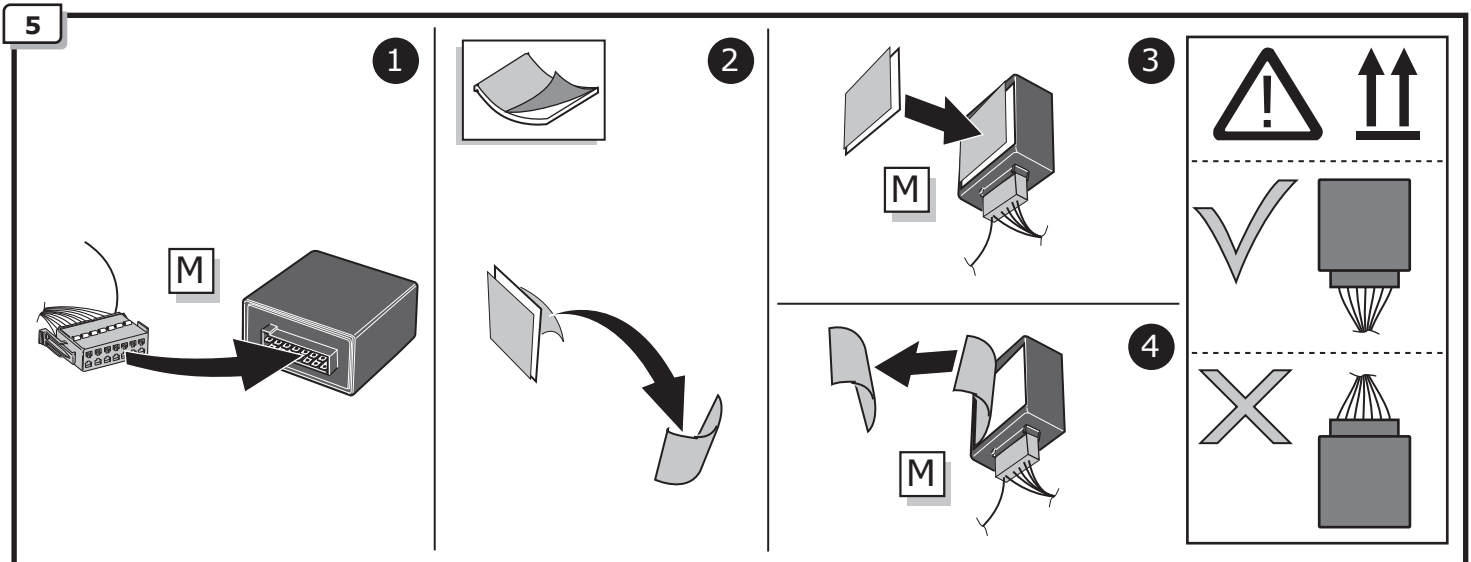
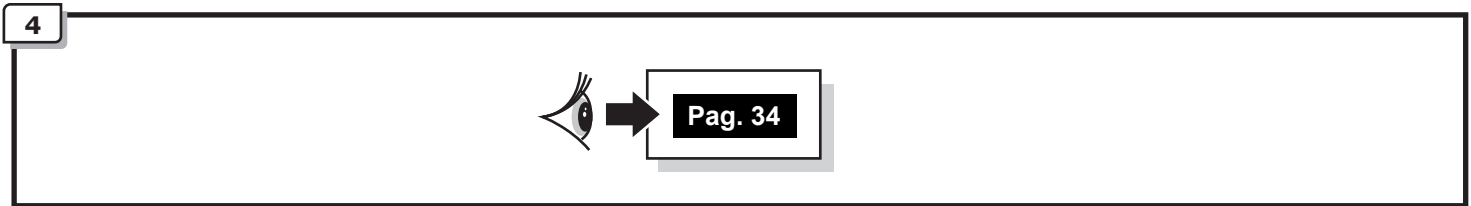
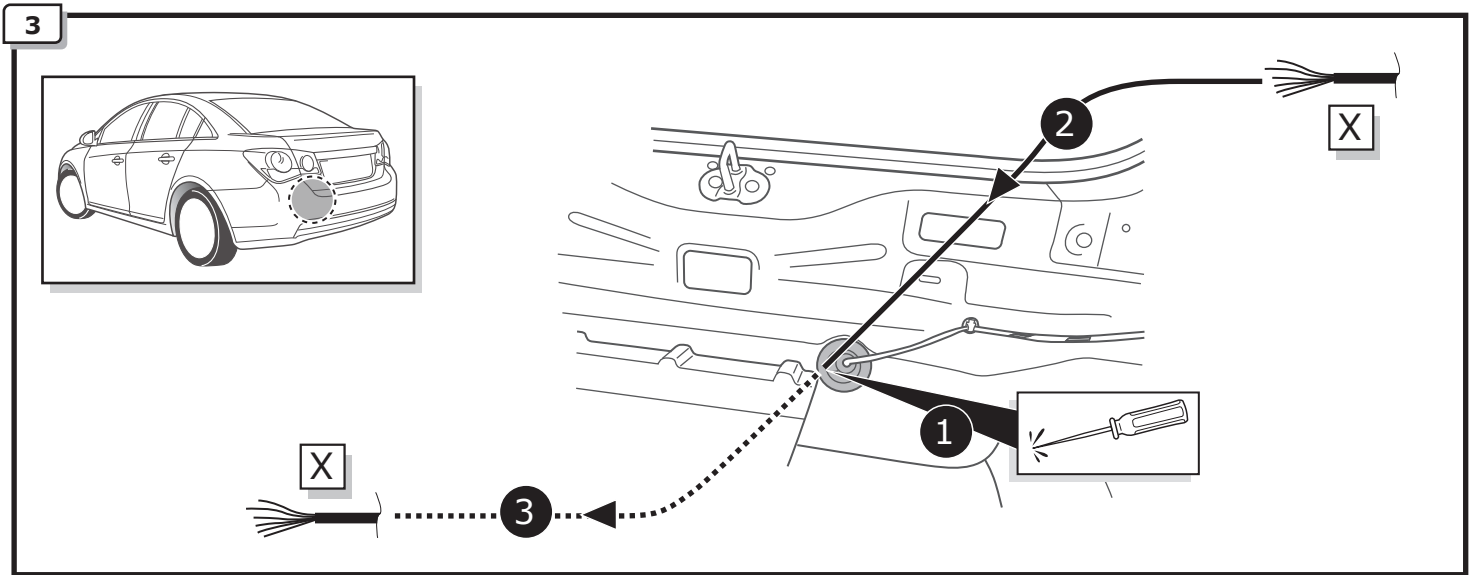
-
Pag. 30

1

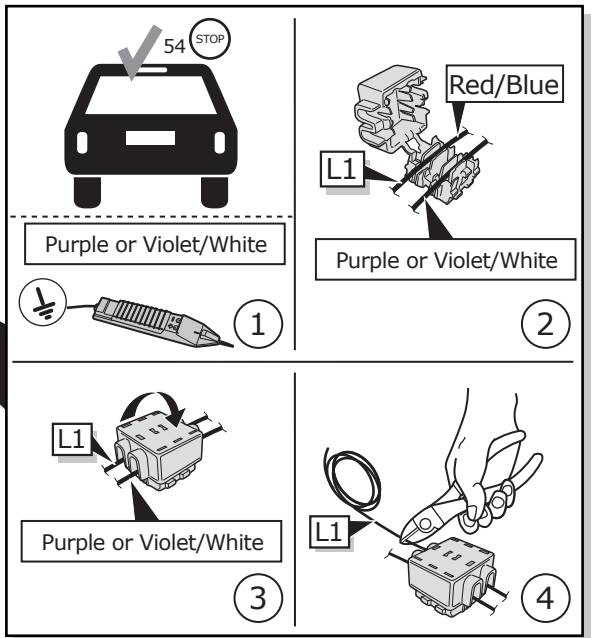
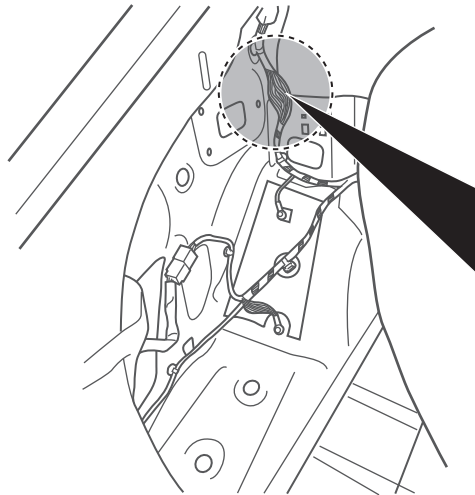
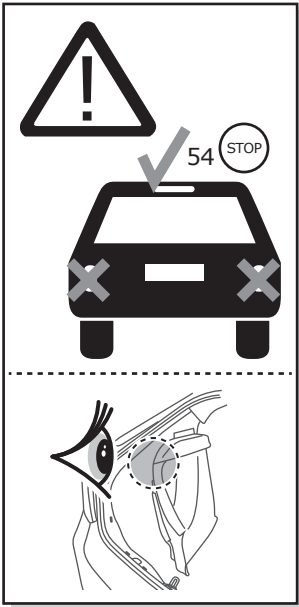


2

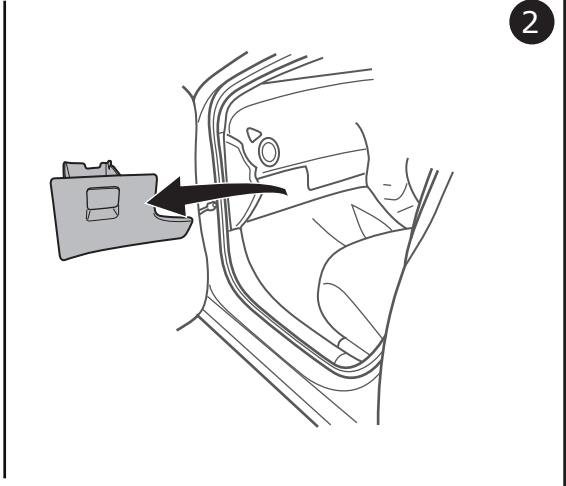
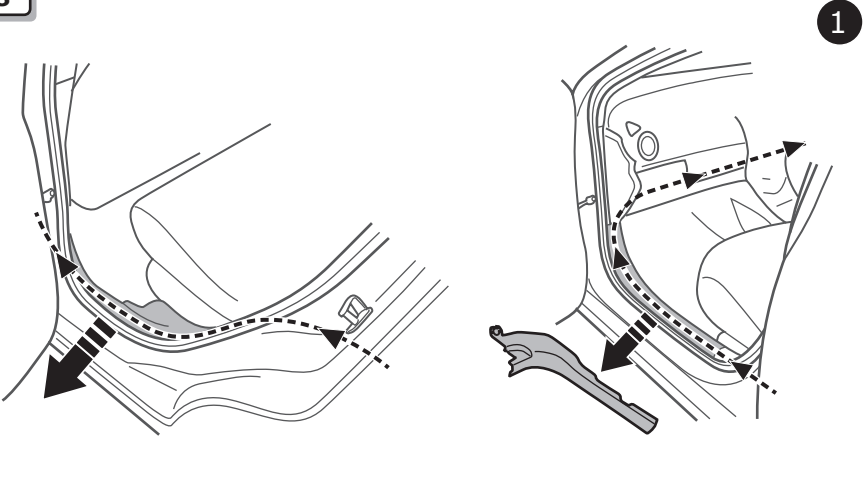




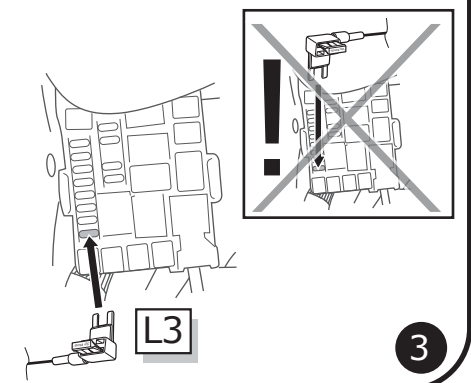
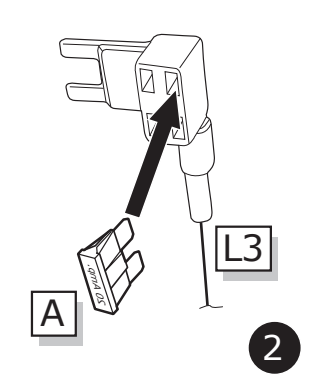
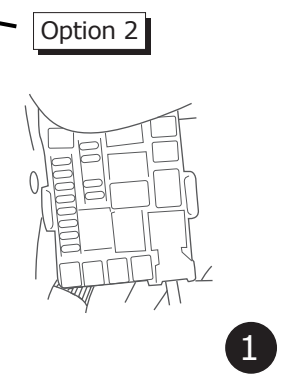
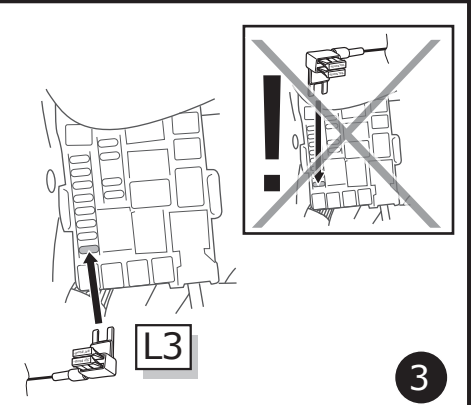
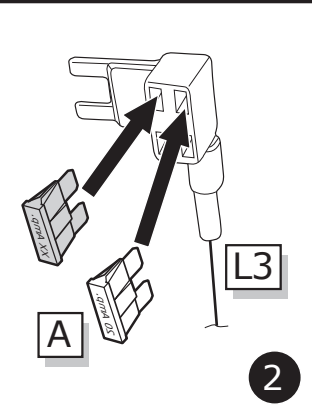
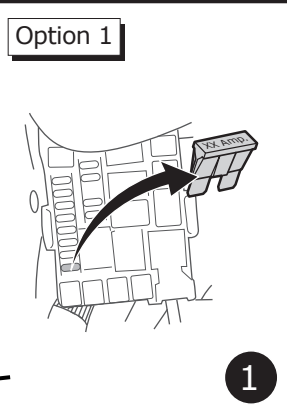
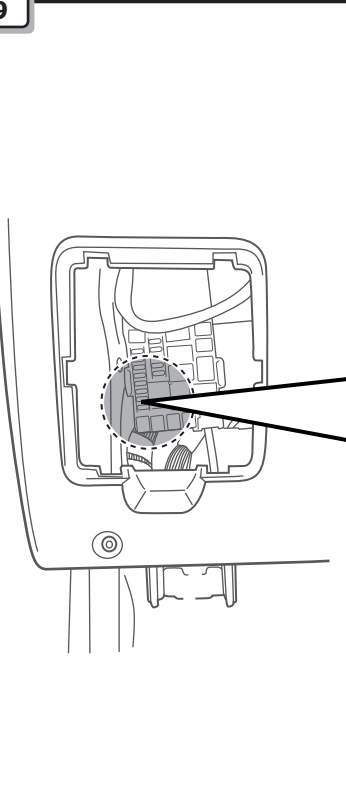
7



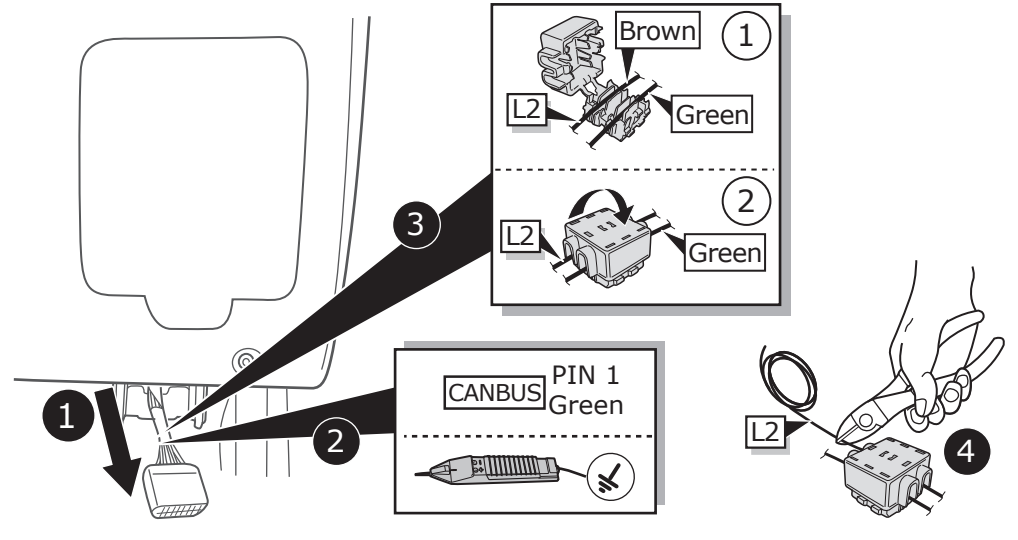
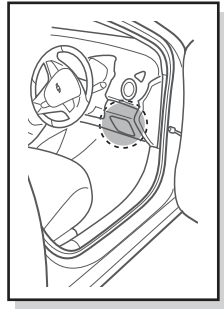
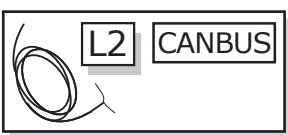
8



9



10



11

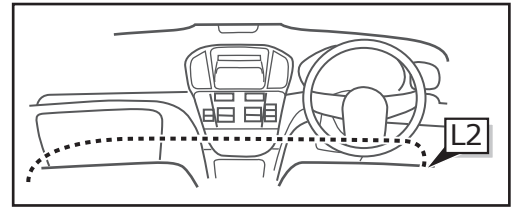
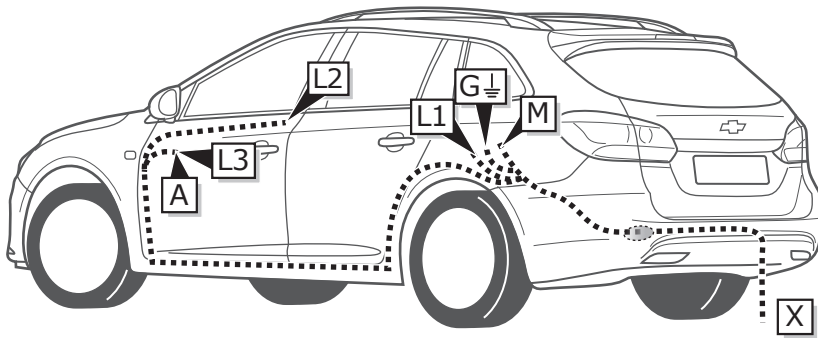


INFO

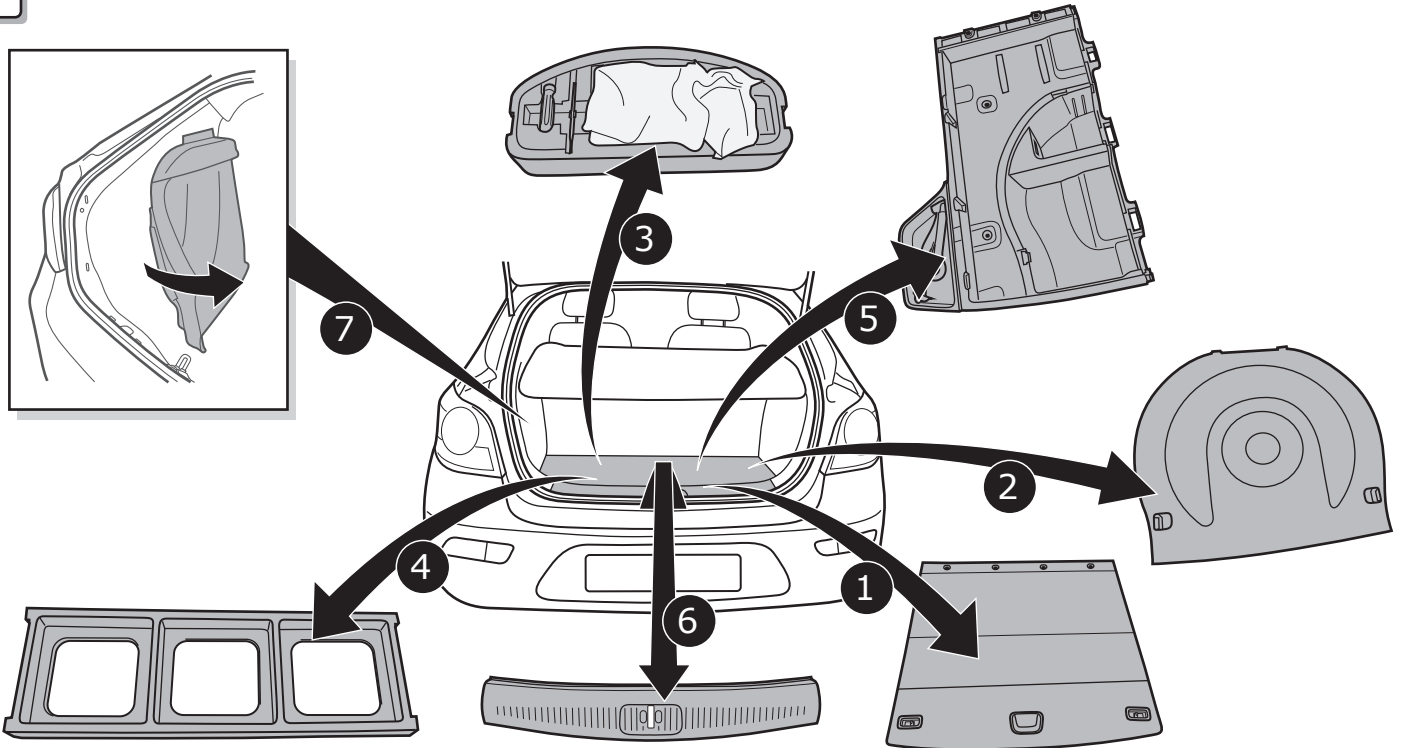
Cruze SW

Pag. 31

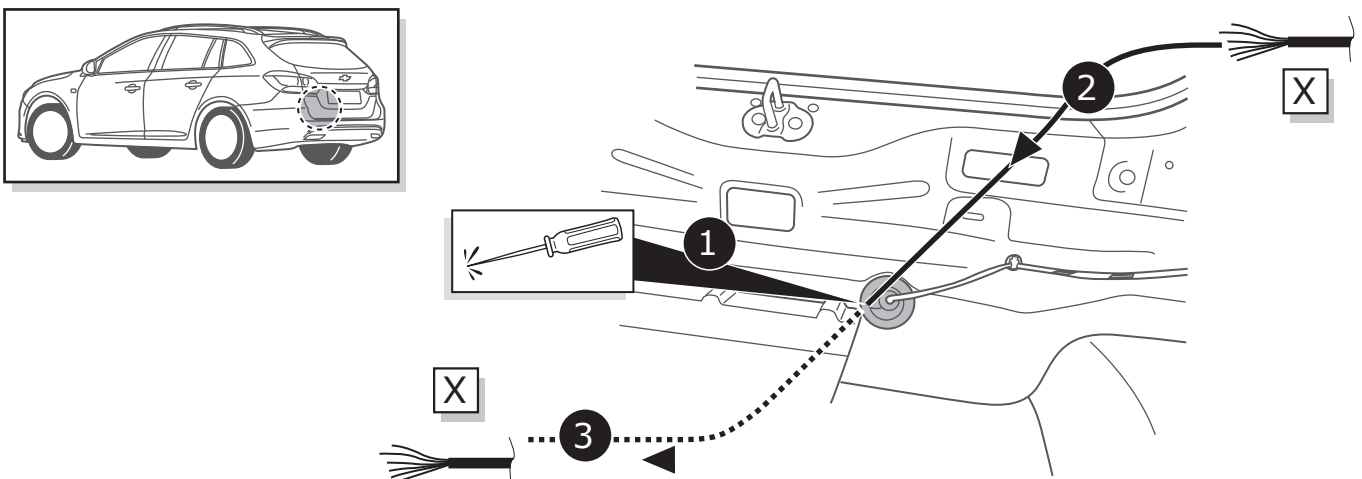
Pag. 33



1



2



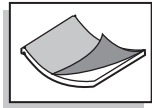
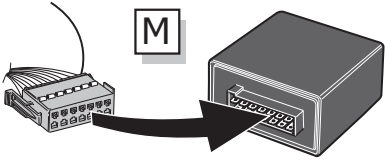
3



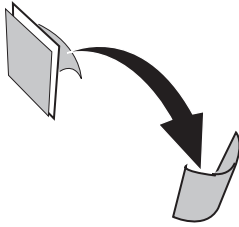
Pag. 34

4

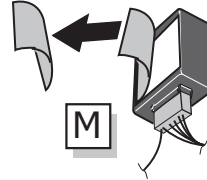
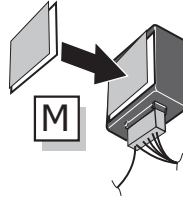
1



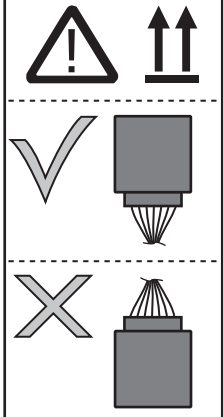
2



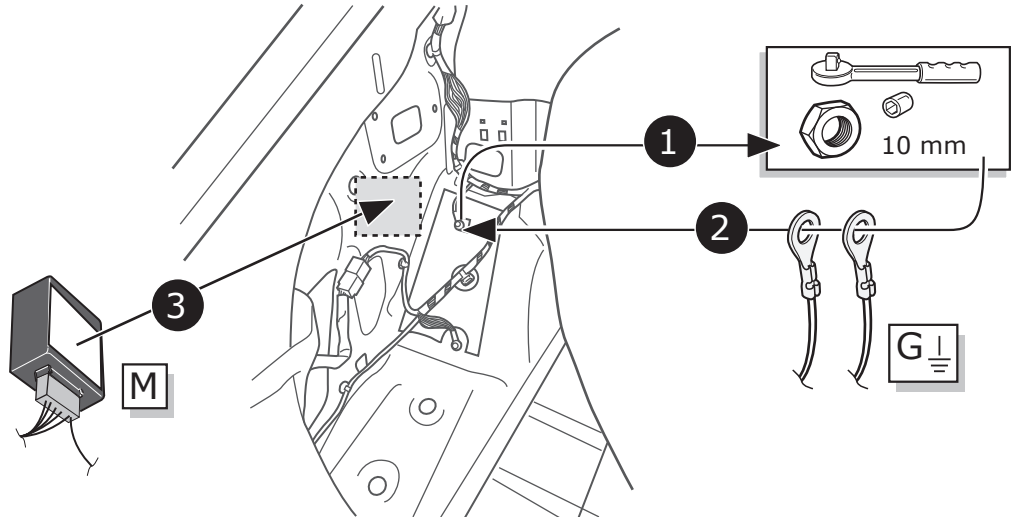
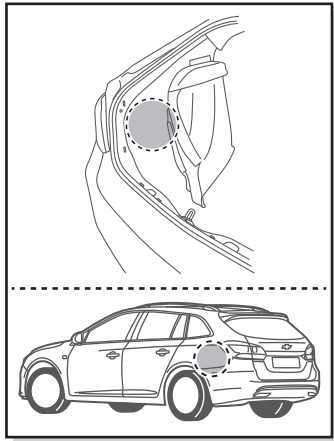
3



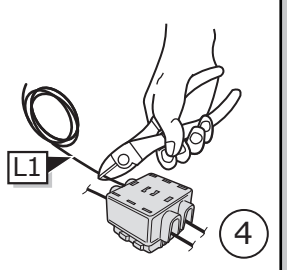
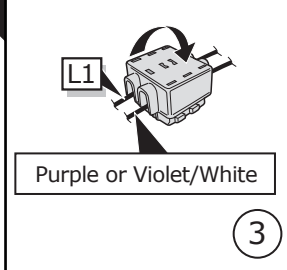
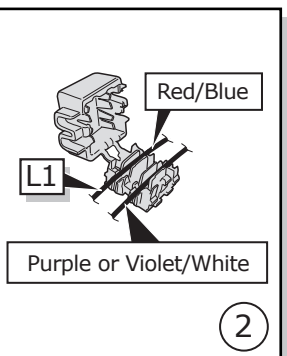
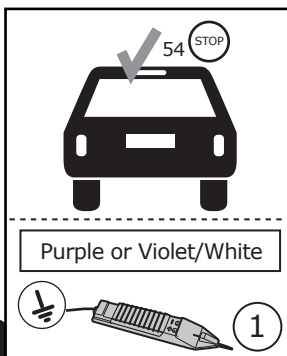
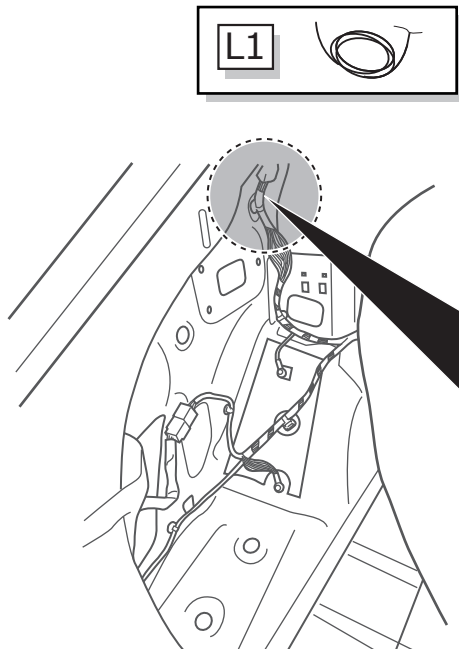
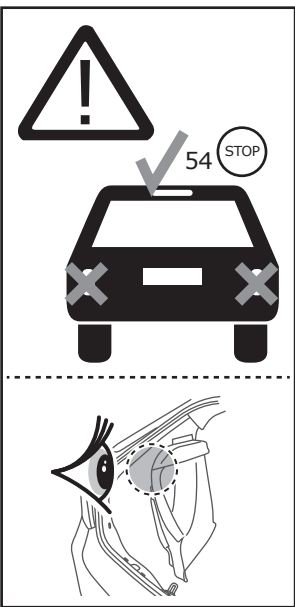
4

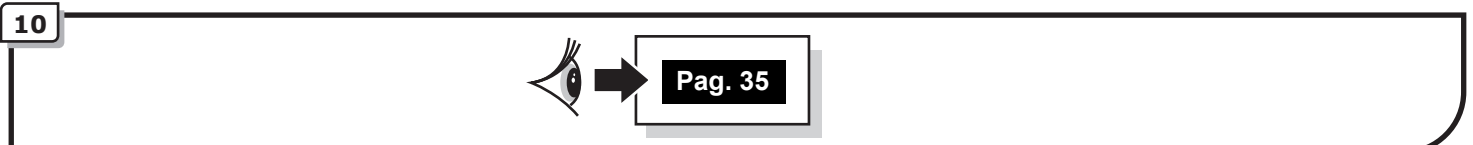
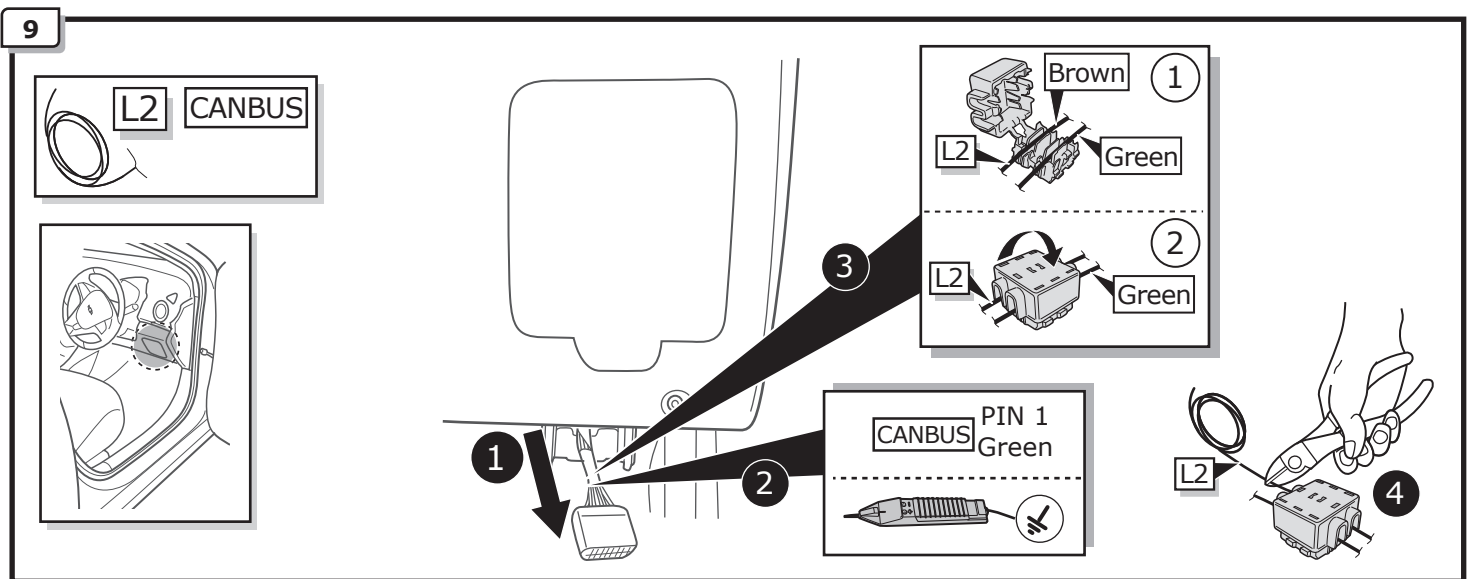
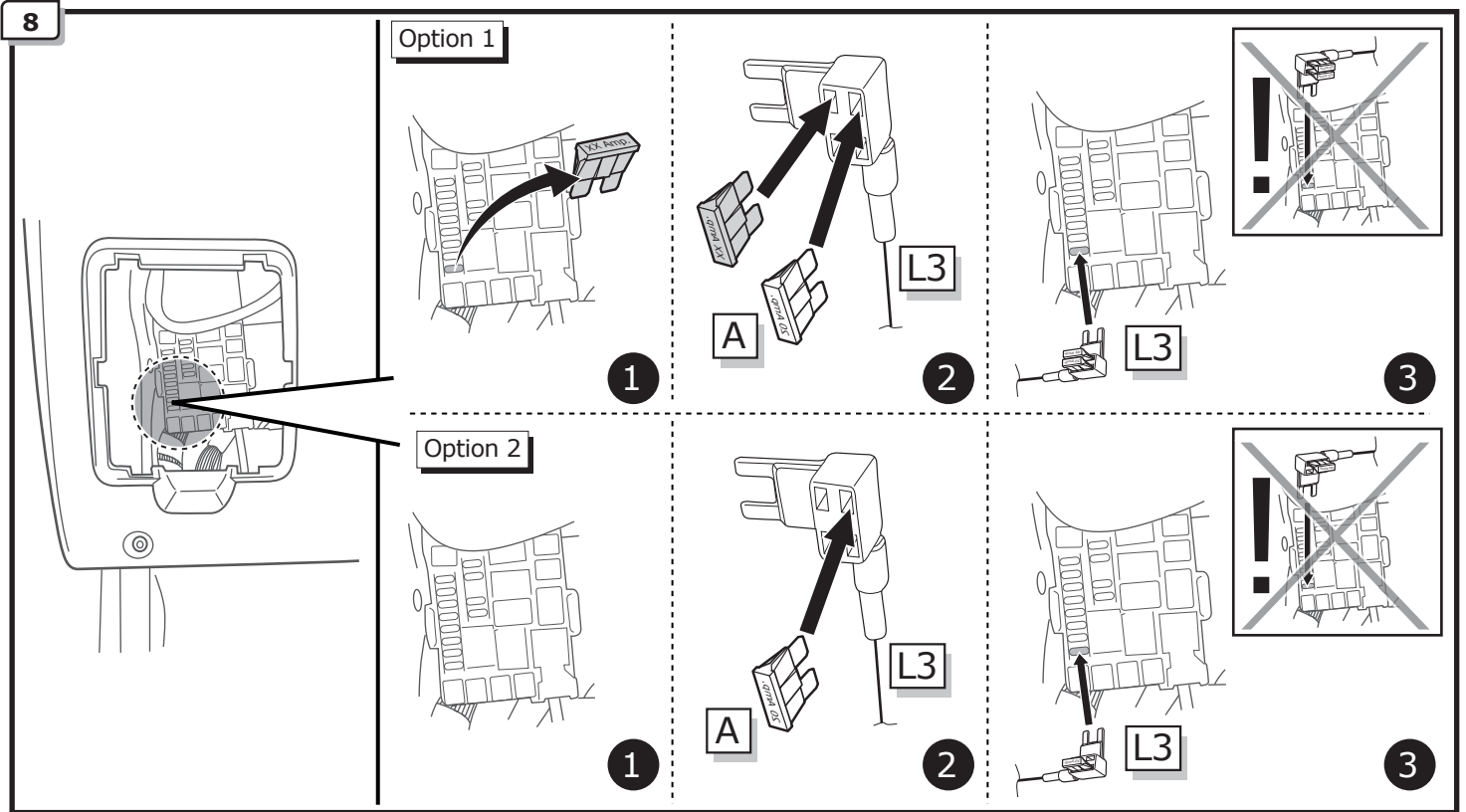
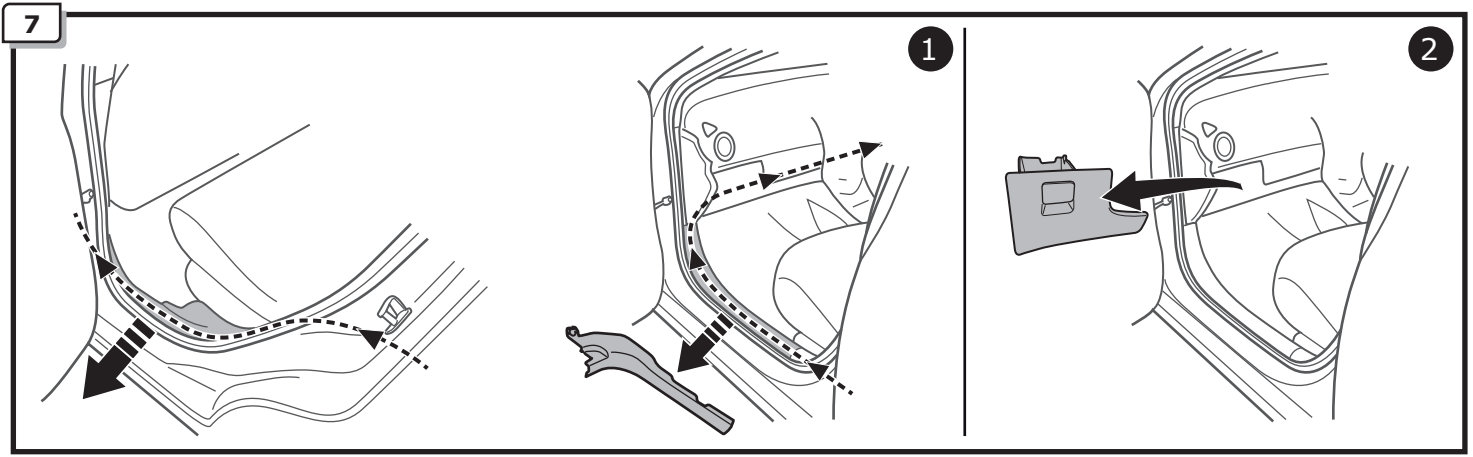


5

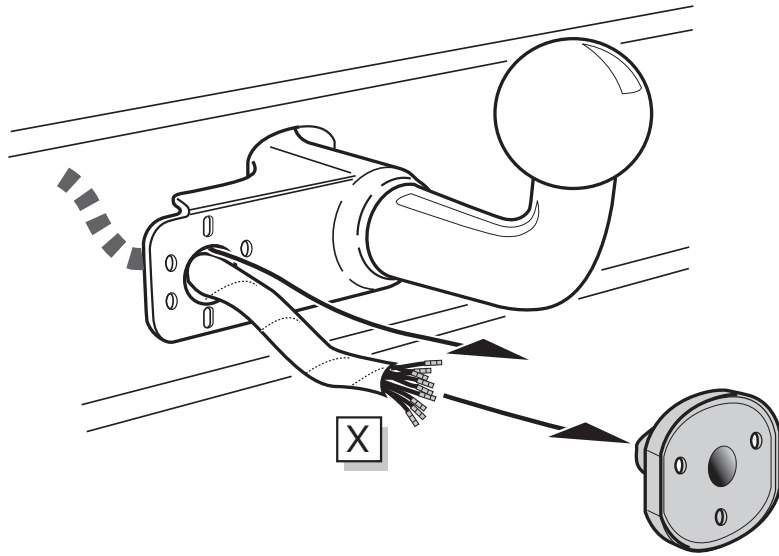


6





A

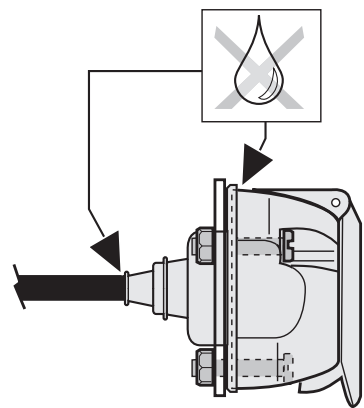
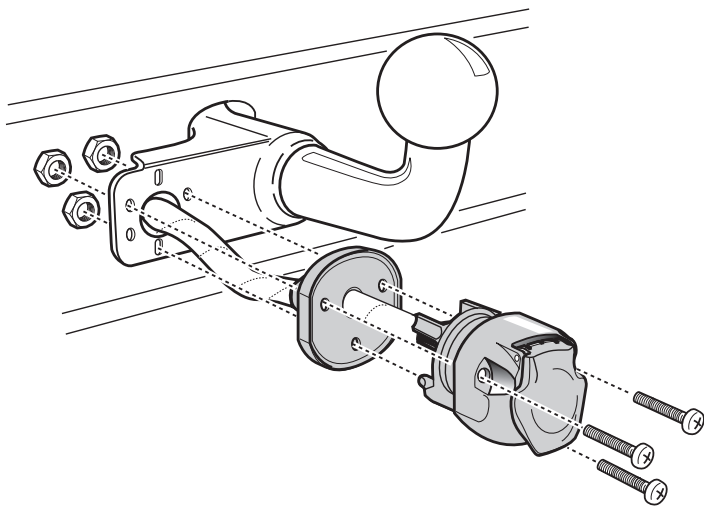


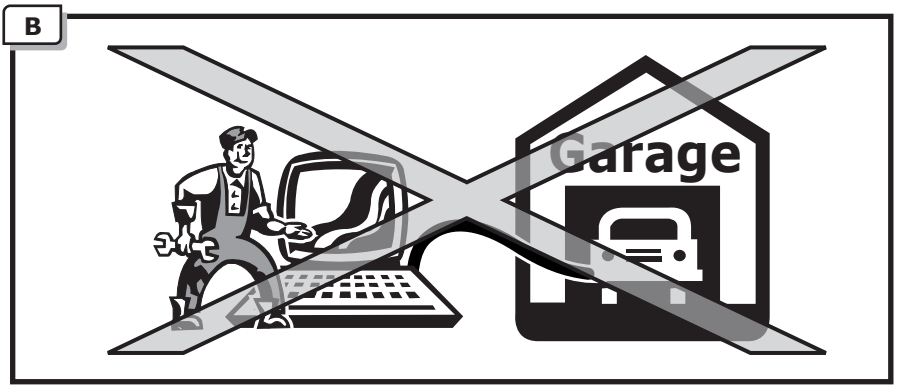
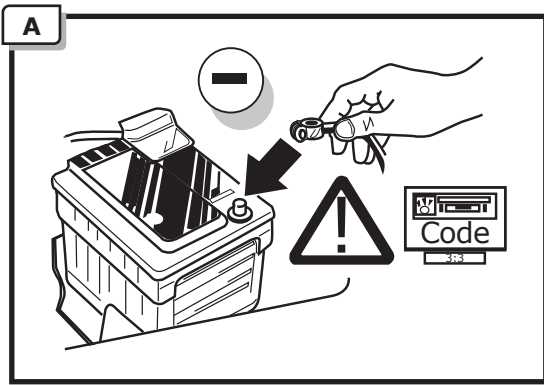
INFO

SOCKET CONNECTION 

Pag. 36

B



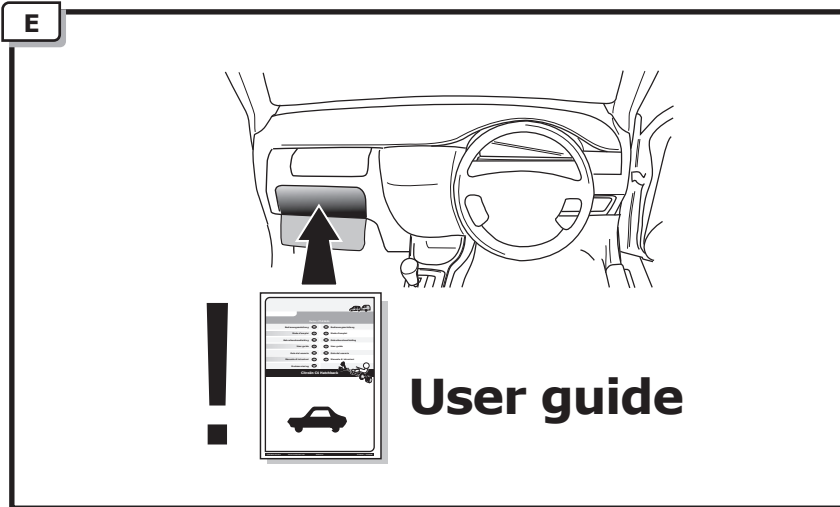


C

! TEST ALL THE CIRCUITS WITH A TEST DEVICE WITH THE CORRECT POWER LOAD FOR EACH FUNCTION. A TEST DEVICE WITH LED'S CANNOT BE USED FOR THIS PURPOSE.

D

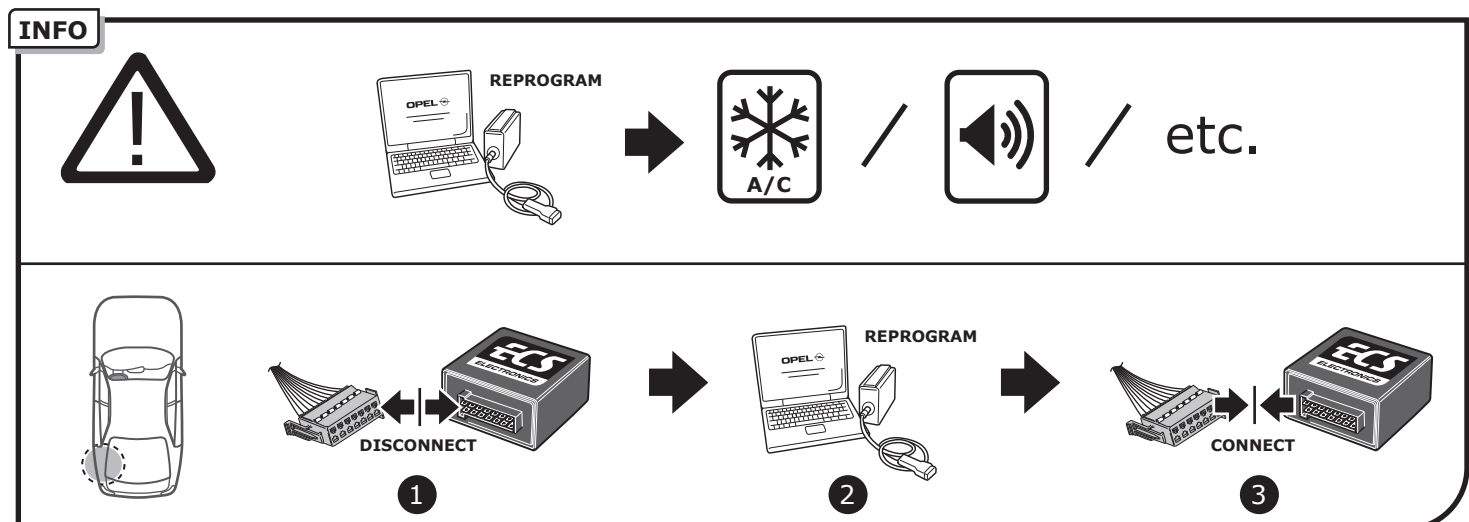
REINSTALL TRIM.





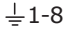







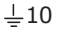
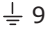
INSTALLERS SUPPORT
FREE CALL

00800 22 55 23 27
CALL2ECS

Monday - Friday
08.00am - 11.00am
12.00am - 05.00pm GMT
customer@ecs-electronics.co.uk
www.ecs-electronicsuk.co.uk



SOCKET CONNECTION

DIN/ISO 11446												—	
	1/L	2	3/31	4/R	5/58-R	6/54	7/58-L	8	9	10	11	12	13
Pmax	21W	21W		21W	42W	3x21W	42W	21W	180W/15Amp	180W/15Amp			
Colour	Yellow	Blue	White	Green	Brown	Red 1,00 mm ²	Black	Black/ Red	Brown/ White	Red 2,50 mm ²	White	-	White